



Wokingham

Introduction

The Public Health Outcomes Framework [Healthy lives, healthy people: Improving outcomes and supporting transparency](#) sets out a vision for public health, desired outcomes and the indicators that will help us understand how well public health is being improved and protected. The framework concentrates on two high-level outcomes to be achieved across the public health system, and groups further indicators into four 'domains' that cover the full spectrum of public health. The outcomes reflect a focus not only on how long people live, but on how well they live at all stages of life.

This profile currently presents data for the first set of indicators at England and upper tier local authority levels, collated by Public Health England.

The profile allows you to:

- Compare your local authority against other authorities in the region
- Benchmark your local authority against the England value

Public Health Outcomes Framework baseline data will be revised and corrected in accordance with the [general DH statistical policy on revisions and corrections](#).

Contents

Spine Charts

Overarching indicators	Page 2
Wider determinants of health	Page 2
Health improvement	Page 4
Health protection	Page 5
Healthcare and premature mortality	Page 6

Tartan Rugs

Overarching indicators	Page 8
Wider determinants of health	Page 9
Health improvement	Page 12
Health protection	Page 14
Healthcare and premature mortality	Page 16

Summary Charts

Overarching indicators	Page 20
Wider determinants of health	Page 22
Health improvement	Page 26
Health protection	Page 31
Healthcare and premature mortality	Page 34

Definitions

Page 40



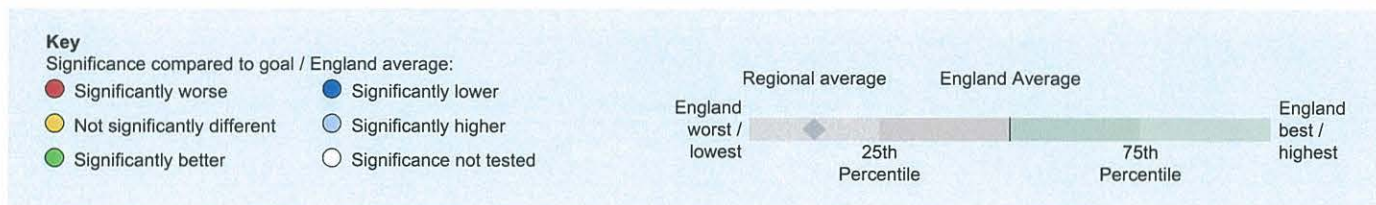
© Crown Copyright and database rights 2013, Ordnance Survey 100016969
OpenStreetMap contributors ODbL

www.phoutcomes.info

Produced by Public Health England.

For enquiries please contact phof.enquiries@phe.gov.uk or call us on 020 7654 8307

Spine Charts



Overarching indicators

	Period	Local value	Eng. value	Eng. worst	Range	Eng. best
0.1i - Healthy life expectancy at birth (Male)	2010 - 12	69.2	63.4	52.5		70.0
0.1i - Healthy life expectancy at birth (Female)	2010 - 12	71.0	64.1	55.5		71.0
0.1ii - Life Expectancy at birth (Male)	2010 - 12	81.6	79.2	74.0		82.1
0.1ii - Life Expectancy at birth (Female)	2010 - 12	84.5	83.0	79.5		85.9
0.1ii - Life Expectancy at 65 (Male)	2010 - 12	19.8	18.6	15.8		20.9
0.1ii - Life Expectancy at 65 (Female)	2010 - 12	21.8	21.1	18.8		23.8
0.2i - Slope index of inequality in life expectancy at birth based on national deprivation deciles within England (Male)	2010 - 12		9.2			
0.2i - Slope index of inequality in life expectancy at birth based on national deprivation deciles within England (Female)	2010 - 12		6.8			
0.2ii - Number of upper tier local authorities for which the local slope index of inequality in life expectancy (as defined in 0.2iii) has decreased (Male)	2010 - 12		73			
0.2ii - Number of upper tier local authorities for which the local slope index of inequality in life expectancy (as defined in 0.2iii) has decreased (Female)	2010 - 12		73			
0.2iii - Slope index of inequality in life expectancy at birth within English local authorities, based on local deprivation deciles within each area (Male)	2010 - 12	5.5	-	3.9		16.0
0.2iii - Slope index of inequality in life expectancy at birth within English local authorities, based on local deprivation deciles within each area (Female)	2010 - 12	4.5	-	1.3		11.4
0.2iv - Gap in life expectancy at birth between each local authority and England as a whole (Male)	2010 - 12	2.4	0.0	-5.2		2.9
0.2iv - Gap in life expectancy at birth between each local authority and England as a whole (Female)	2010 - 12	1.5	0.0	-3.5		2.9
0.2v - Slope index of inequality in healthy life expectancy at birth based on national deprivation deciles within England (Male)	2010 - 12		19.4			
0.2v - Slope index of inequality in healthy life expectancy at birth based on national deprivation deciles within England (Female)	2010 - 12		19.8			

Wider determinants of health

	Period	Local value	Eng. value	Eng. worst	Range	Eng. best
1.01i - Children in poverty (all dependent children under 20)	2011	6.6	20.1	46.1		66.0
1.01ii - Children in poverty (under 16s)	2011	6.9	20.6	43.6		69.0
1.02i - School Readiness: The percentage of children achieving a good level of development at the end of reception	2012/13	47.4	51.7	27.7		69.0
1.02i - School Readiness: The percentage of children with free school meal status achieving a good level of development at the end of reception	2012/13	25.6	36.2	17.8		60.0

Wider determinants of health continued

	Period	Local value	Eng. value	Eng. worst	Range	Eng. best
1.02ii - School Readiness: The percentage of Year 1 pupils achieving the expected level in the phonics screening check	2012/13	62.2	69.1	58.8		79.0
1.02ii - School Readiness: The percentage of Year 1 pupils with free school meal status achieving the expected level in the phonics screening check	2012/13	37.2	55.8	37.2		70.9
1.03 - Pupil absence	2012/13	4.65	5.26	6.31		4.36
1.04 - First time entrants to the youth justice system	2013	289	441	847		171
1.05 - 16-18 year olds not in education employment or training	2013	3.1	5.3	9.8		1.8
1.06i - Adults with a learning disability who live in stable and appropriate accommodation (Persons)	2012/13	72.1	73.5	32.6		96.6
1.06i - Adults with a learning disability who live in stable and appropriate accommodation (Male)	2012/13	72.9	73.2	32.2		97.9
1.06i - Adults with a learning disability who live in stable and appropriate accommodation (Female)	2012/13	70.7	74.0	33.3		97.9
1.06ii - % of adults in contact with secondary mental health services who live in stable and appropriate accommodation (Persons)	2012/13	94.1	58.5	5.5		94.1
1.06ii - % of adults in contact with secondary mental health services who live in stable and appropriate accommodation (Male)	2012/13	92.0	57.3	5.2		92.7
1.06ii - % of adults in contact with secondary mental health services who live in stable and appropriate accommodation (Female)	2012/13	96.2	59.8	5.5		96.2
1.07 - People in prison who have a mental illness or a significant mental illness	2012/13		4.35			
1.08i - Gap in the employment rate between those with a long-term health condition and the overall employment rate	2012	-1.8	7.1	-5.3		21.7
1.08ii - Gap in the employment rate between those with a learning disability and the overall employment rate	2013/14	63.3	65.1	46.7		79.1
1.08iii - Gap in the employment rate for those in contact with secondary mental health services and the overall employment rate	2012/13	60.7	62.3	53.1		75.1
1.09i - Sickness absence - The percentage of employees who had at least one day off in the previous week	2010 - 12	2.7	2.5	4.6		0.8
1.09ii - Sickness absence - The percent of working days lost due to sickness absence	2010 - 12	1.4	1.6	3.1		0.4
1.10 - Killed and seriously injured (KSI) casualties on England's roads	2011 - 13	29.1	39.7	78.9		16.6
1.11 - Domestic Abuse	2012/13	19.4	18.8	5.6		30.2
1.12i - Violent crime (including sexual violence) - hospital admissions for violence	2010/11 - 12/13	9.3	57.6	167.8		9.3
1.12ii - Violent crime (including sexual violence) - violence offences per 1,000 population	2013/14	4.6	11.1	4.6		27.8
1.12iii - Violent crime (including sexual violence) - Rate of sexual offences per 1,000 population	2013/14	0.57	1.01	0.38		2.43
1.13i - Re-offending levels - percentage of offenders who re-offend	2011	23.4	26.9	14.4		36.3
1.13ii - Re-offending levels - average number of re-offences per offender	2011	0.57	0.78	0.31		1.27
1.14i - The rate of complaints about noise	2012/13	3.4	7.5	80.4		2.5
1.14ii - The percentage of the population exposed to road, rail and air transport noise of 65dB(A) or more, during the daytime	2011	3.9	5.2	0.8		20.8
1.14iii - The percentage of the population exposed to road, rail and air transport noise of 55 dB(A) or more during the night-time	2011	11.3	8.0	1.2		42.4
1.15i - Statutory homelessness - homelessness acceptances	2013/14	0.4	2.3	0.1		12.5
1.15ii - Statutory homelessness - households in temporary accommodation	2013/14	0.1	2.6	29.7		0.0
1.16 - Utilisation of outdoor space for exercise/health reasons	Mar 2013 - Feb 2014	- x	17.1	0.3		30.8
1.17 - Fuel Poverty	2012	5.6	10.4	21.3		4.9
1.18i - Social Isolation: % of adult social care users who have as much social contact as they would like	2012/13	46.6	43.2	31.9		53.5

Note: x - Value Missing

www.phoutcomes.info

Wokingham

Wider determinants of health continued

	Period	Local value	Eng. value	Eng. worst	Range	Eng. best
1.18ii - Social Isolation: % of adult carers who have as much social contact as they would like	2012/13	42.2	41.3	23.9		58.5
1.19i - Older people's perception of community safety - safe in local area during the day	2012/13		97.5			
1.19ii - Older people's perception of community safety - safe in local area after dark	2012/13		61.9			
1.19iii - Older people's perception of community safety - safe in own home at night	2012/13		94.3			

Health improvement

	Period	Local value	Eng. value	Eng. worst	Range	Eng. best
2.01 - Low birth weight of term babies	2012	1.7	2.8	5.0		1.5
2.02i - Breastfeeding - Breastfeeding initiation	2013/14	- x	73.9	36.6		93.0
2.02ii - Breastfeeding - Breastfeeding prevalence at 6-8 weeks after birth	2013/14	- x	-	19.4		77.4
2.03 - Smoking status at time of delivery	2013/14	5.9	12.0	27.5		1.9
2.04 - Under 18 conceptions	2012	15.4	27.7	52.0		14.2
2.04 - Under 18 conceptions: conceptions in those aged under 16	2012	- *	5.6	15.8		2.0
2.06i - Excess weight in 4-5 and 10-11 year olds - 4-5 year olds	2012/13	16.6	22.2	32.2		16.1
2.06ii - Excess weight in 4-5 and 10-11 year olds - 10-11 year olds	2012/13	26.2	33.3	44.2		24.1
2.07i - Hospital admissions caused by unintentional and deliberate injuries in children (aged 0-14 years)	2012/13	73.2	103.8	191.3		61.7
2.07i - Hospital admissions caused by unintentional and deliberate injuries in children (aged 0-4 years)	2012/13	89.7	134.7	282.4		76.0
2.07ii - Hospital admissions caused by unintentional and deliberate injuries in young people (aged 15-24)	2012/13	85.5	130.7	277.3		63.8
2.08 - Emotional well-being of looked after children	2012/13	16.1	14.0	9.4		21.5
2.09ii - Smoking prevalence age 15 years - regular smokers	2013		8			
2.09iii - Smoking prevalence age 15 years - occasional smokers	2013		10			
2.12 - Excess Weight in Adults	2012	57.4	63.8	74.4		45.9
2.13i - Percentage of physically active and inactive adults - active adults	2013	61.8	55.6	43.4		66.3
2.13ii - Percentage of active and inactive adults - inactive adults	2013	22.5	28.9	39.2		16.3
2.14 - Smoking Prevalence	2013	10.5	18.4	29.4		10.5
2.14 - Smoking prevalence - routine & manual	2013	22.5	28.6	47.5		16.5
2.15i - Successful completion of drug treatment - opiate users	2013	8.2	7.8	3.5		15.8
2.15ii - Successful completion of drug treatment - non-opiate users	2013	35.5	37.7	7.6		60.2
2.16 - People entering prison with substance dependence issues who are previously not known to community treatment	2012/13	- *	46.9	69.8		19.7
2.17 - Recorded diabetes	2012/13	4.27 ^	6.01	3.69		8.42
2.18 - Alcohol related admissions to hospital (Persons)	2012/13	365	637	1121		365
2.18 - Alcohol related admissions to hospital (Male)	2012/13	454	829	1425		454
2.18 - Alcohol related admissions to hospital (Female)	2012/13	291	465	839		269
2.19 - Cancer diagnosed at early stage (Experimental Statistics)	2012	46.7	41.6	34.4		60.3
2.20i - Cancer screening coverage - breast cancer	2014	81.7	75.9	57.4		83.7
2.20ii - Cancer screening coverage - cervical cancer	2014	78.4	74.2	59.5		79.7
2.21vii - Access to non-cancer screening programmes - diabetic retinopathy	2012/13	73.3 ^	79.1	66.0		94.8

Note: * - Disclosure control applied, ^ - Value estimated, x - Value Missing

Health improvement continued

	Period	Local value	Eng. value	Eng. worst	Range	Eng. best
2.22iii - Cumulative % of the eligible population aged 40-74 offered an NHS Health Check	2013/14	8.2	18.4	0.8		44.4
2.22iv - Cumulative % of the eligible population aged 40-74 offered an NHS Health Check who received an NHS Health Check	2013/14	49.3	49.0	14.6		100
2.22v - Cumulative % of the eligible population aged 40-74 who received an NHS Health check	2013/14	4.0	9.0	0.9		29.1
2.23i - Self-reported well-being - people with a low satisfaction score	2012/13	4.0	5.8	10.1		3.4
2.23ii - Self-reported well-being - people with a low worthwhile score	2012/13	- x	4.4	8.2		2.9
2.23iii - Self-reported well-being - people with a low happiness score	2012/13	7.8	10.4	15.8		5.5
2.23iv - Self-reported well-being - people with a high anxiety score	2012/13	21.9	21.0	29.0		10.9
2.23v - Average Warwick-Edinburgh Mental Well-Being Scale (WEMWBS) score	2010 - 12		37.7			
2.24i - Injuries due to falls in people aged 65 and over (Persons)	2012/13	1318	2011	3508		1178
2.24i - Injuries due to falls in people aged 65 and over (males/females) (Male)	2012/13	998	1602	2975		903
2.24i - Injuries due to falls in people aged 65 and over (males/females) (Female)	2012/13	1638	2420	4041		1452
2.24ii - Injuries due to falls in people aged 65 and over - aged 65-79	2012/13	558	975	1826		544
2.24iii - Injuries due to falls in people aged 65 and over - aged 80+	2012/13	3521	5015	9119		2876

Health protection

	Period	Local value	Eng. value	Eng. worst	Range	Eng. best
3.01 - Fraction of mortality attributable to particulate air pollution	2012	5.3	5.1	3.0		7.7
3.02i - Chlamydia screening detection rate (15-24 year olds) - Old NCSP data < 2000 2000 to 2400 ≥ 2400	2011	1452	2092	948		4911
3.02ii - Chlamydia detection rate (15-24 year olds) - CTAD (Persons) < 1900 1900 to 2300 ≥ 2300	2013	966	2016	840		5758
3.02ii - Chlamydia detection rate (15-24 year olds) - CTAD (Male) < 1900 1900 to 2300 ≥ 2300	2013	650	1387	599		4262
3.02ii - Chlamydia detection rate (15-24 year olds) - CTAD (Female) < 1900 1900 to 2300 ≥ 2300	2013	1312	2634	1094		6358
3.03i - Population vaccination coverage - Hepatitis B (1 year old)	2012/13	100 ^	-	40.0		100
3.03i - Population vaccination coverage - Hepatitis B (2 years old)	2012/13	82.6 ^	-	9.1		100
3.03iii - Population vaccination coverage - Dtap / IPV / Hib (1 year old) < 90 ≥ 90	2012/13	94.2 ^	94.7	79.0		99.0
3.03iii - Population vaccination coverage - Dtap / IPV / Hib (2 years old) < 90 ≥ 90	2012/13	96.6 ^	96.3	81.9		99.4
3.03iv - Population vaccination coverage - MenC < 90 ≥ 90	2012/13	92.9 ^	93.9	75.9		98.8
3.03v - Population vaccination coverage - PCV < 90 ≥ 90	2012/13	93.5 ^	94.4	78.7		99.0
3.03vi - Population vaccination coverage - Hib / MenC booster (2 years old) < 90 ≥ 90	2012/13	93.5 ^	92.7	77.0		98.3
3.03vi - Population vaccination coverage - Hib / Men C booster (5 years) < 90 ≥ 90	2012/13	91.1 ^	91.5	75.7		98.1
3.03vii - Population vaccination coverage - PCV booster < 90 ≥ 90	2012/13	93.6 ^	92.5	75.1		97.5
3.03viii - Population vaccination coverage - MMR for one dose (2 years old) < 90 ≥ 90	2012/13	94.5 ^	92.3	77.4		98.4

Note: ^ - Value estimated, x - Value Missing

Wokingham

Health protection continued

	Period	Local value	Eng. value	Eng. worst	Range	Eng. best
3.03ix - Population vaccination coverage - MMR for one dose (5 years old) < 90 ≥ 90	2012/13	95.1 ^	93.9	82.1		98.3
3.03x - Population vaccination coverage - MMR for two doses (5 years old) < 90 ≥ 90	2012/13	90.9 ^	87.7	68.9		97.0
3.03xii - Population vaccination coverage - HPV < previous years England average ≥ previous years England average	2012/13	84.4 ^	86.1	62.1		96.2
3.03xiii - Population vaccination coverage - PPV < previous years England average ≥ previous years England average	2012/13	74.6 ^	69.1	55.3		77.0
3.03xiv - Population vaccination coverage - Flu (aged 65+) < 75 ≥ 75	2012/13	75.9 ^	73.4	65.5		80.8
3.03xv - Population vaccination coverage - Flu (at risk individuals) < 75 ≥ 75	2012/13	56.4 ^	51.3	44.2		68.8
3.04 - People presenting with HIV at a late stage of infection < 25 25 to 50 ≥ 50	2010 - 12	66.7	48.3	80.0		0.0
3.05i - Treatment completion for TB < 85 ≥ 85	2012	- x	82.8	22.6		100
3.05ii - Incidence of TB	2010 - 12	8.4	15.1	112.3		0.0
3.06 - NHS organisations with a board approved sustainable development management plan	2013/14	60.0	41.6	0.0		83.3

Healthcare and premature mortality

	Period	Local value	Eng. value	Eng. worst	Range	Eng. best
4.01 - Infant mortality	2010 - 12	2.9	4.1	7.5		1.1
4.02 - Tooth decay in children aged 5	2011/12	0.39	0.94	2.10		0.35
4.03 - Mortality rate from causes considered preventable (Persons)	2011 - 13	132.0	183.9	319.7		130.3
4.03 - Mortality rate from causes considered preventable (Male)	2011 - 13	167.3	233.1	409.1		166.5
4.03 - Mortality rate from causes considered preventable (Female)	2011 - 13	100.3	138.0	235.2		93.7
4.04i - Under 75 mortality rate from all cardiovascular diseases (Persons)	2011 - 13	54.9	78.2	137.0		52.1
4.04i - Under 75 mortality rate from all cardiovascular diseases (Male)	2011 - 13	75.3	109.5	184.9		75.0
4.04i - Under 75 mortality rate from all cardiovascular diseases (Female)	2011 - 13	35.2	48.6	91.2		29.9
4.04ii - Under 75 mortality rate from cardiovascular diseases considered preventable (Persons)	2011 - 13	37.0	50.9	89.0		30.7
4.04ii - Under 75 mortality rate from cardiovascular diseases considered preventable (Male)	2011 - 13	52.9	76.7	130.9		46.2
4.04ii - Under 75 mortality rate from cardiovascular diseases considered preventable (Female)	2011 - 13	21.7	26.5	57.1		14.5
4.05i - Under 75 mortality rate from cancer (Persons)	2011 - 13	120.3	144.4	198.9		104.0
4.05i - Under 75 mortality rate from cancer (Male)	2011 - 13	132.7	160.9	230.7		113.8
4.05i - Under 75 mortality rate from cancer (Female)	2011 - 13	109.2	129.2	182.3		95.5
4.05ii - Under 75 mortality rate from cancer considered preventable (Persons)	2011 - 13	64.1	83.8	126.9		52.7
4.05ii - Under 75 mortality rate from cancer considered preventable (Male)	2011 - 13	70.7	91.3	148.1		46.9
4.05ii - Under 75 mortality rate from cancer considered preventable (Female)	2011 - 13	58.1	76.9	118.2		55.6
4.06i - Under 75 mortality rate from liver disease (Persons)	2011 - 13	13.5	17.9	43.4		11.3
4.06i - Under 75 mortality rate from liver disease (Male)	2011 - 13	16.8	23.6	58.9		14.3

Note: ^ - Value estimated, x - Value Missing

Healthcare and premature mortality continued

	Period	Local value	Eng. value	Eng. worst	Range	Eng. best
4.06i - Under 75 mortality rate from liver disease (Female)	2011 - 13	- x	12.5	27.7		7.4
4.06ii - Under 75 mortality rate from liver disease considered preventable (Persons)	2011 - 13	11.2	15.7	39.5		9.6
4.06ii - Under 75 mortality rate from liver disease considered preventable (Male)	2011 - 13	14.8	21.1	54.4		12.4
4.06ii - Under 75 mortality rate from liver disease considered preventable (Female)	2011 - 13	- x	10.5	24.5		6.4
4.07i - Under 75 mortality rate from respiratory disease (Persons)	2011 - 13	23.5	33.2	78.1		19.5
4.07i - Under 75 mortality rate from respiratory disease (Male)	2011 - 13	26.9	39.1	94.6		23.0
4.07i - Under 75 mortality rate from respiratory disease (Female)	2011 - 13	20.4	27.6	67.1		14.2
4.07ii - Under 75 mortality rate from respiratory disease considered preventable (Persons)	2011 - 13	8.4	17.9	46.6		7.6
4.07ii - Under 75 mortality rate from respiratory disease considered preventable (Male)	2011 - 13	- x	20.4	52.9		10.6
4.07ii - Under 75 mortality rate from respiratory disease considered preventable (Female)	2011 - 13	- x	15.5	41.4		7.6
4.08 - Mortality from communicable diseases (Persons)	2011 - 13	69.8	62.2	93.8		36.0
4.08 - Mortality from communicable diseases (Male)	2011 - 13	69.3	72.1	117.0		46.9
4.08 - Mortality from communicable diseases (Female)	2011 - 13	70.7	56.2	91.4		30.9
4.09 - Excess under 75 mortality rate in adults with serious mental illness	2011/12	407.4	337.4	510.4		124.7
4.10 - Suicide rate (Persons)	2011 - 13	- x	8.8	13.6		4.5
4.10 - Suicide rate (Male)	2011 - 13	- x	13.8	21.9		8.0
4.10 - Suicide rate (Female)	2011 - 13	- x	4.0	6.6		2.2
4.11 - Emergency readmissions within 30 days of discharge from hospital (Persons)	2011/12	10.2	11.8	14.5		8.8
4.11 - Emergency readmissions within 30 days of discharge from hospital (Male)	2011/12	10.1	12.1	14.9		8.7
4.11 - Emergency readmissions within 30 days of discharge from hospital (Female)	2011/12	10.3	11.5	14.7		8.3
4.12i - Preventable sight loss - age related macular degeneration (AMD)	2012/13	98.9	104.4	31.7		221.3
4.12ii - Preventable sight loss - glaucoma	2012/13	11.2	12.5	2.8		29.3
4.12iii - Preventable sight loss - diabetic eye disease	2012/13	- *	3.5	1.1		14.0
4.12iv - Preventable sight loss - sight loss certifications	2012/13	31.9	42.3	13.5		79.8
4.13 - Health related quality of life for older people	2012/13	0.768	0.726	0.636		0.793
4.14i - Hip fractures in people aged 65 and over	2012/13	478.8	568.1	808.4		403.1
4.14ii - Hip fractures in people aged 65 and over - aged 65-79	2012/13	183.8	237.3	401.7		121.8
4.14iii - Hip fractures in people aged 65 and over - aged 80+	2012/13	1334	1528	2150		1108
4.15i - Excess Winter Deaths Index (Single year, all ages)	Aug 2011 - Jul 2012	8.6	16.1	30.7		2.1
4.15ii - Excess Winter Deaths Index (single year, ages 85+)	Aug 2011 - Jul 2012	10.6	22.9	53.1		-7.6
4.15iii - Excess Winter Deaths Index (3 years, all ages)	Aug 2009 - Jul 2012	14.8	16.5	27.4		6.4
4.15iv - Excess Winter Deaths Index (3 years, ages 85+)	Aug 2009 - Jul 2012	19.5	22.6	38.5		11.3
4.16 - Estimated diagnosis rate for people with dementia	2012/13		48.7			

Note: * - Disclosure control applied, x - Value Missing

Tartan Rugs

Overarching indicators

Indicator	Period	England	Bracknell F	Brig & Hov	Bucks	East Sussex	Hants	loW	Kent	Medway	Milt Keynes	Oxon	Portsmouth	Reading	Slough	Southampton	Surrey	W Berks	W Sussex	Win & Maid	Wokingham
0.1i Healthy life expectancy at birth (Male)	2010 - 12	63.4	67.0	63.6	69.8	63.1	66.6	62.9	63.5	62.0	62.5	66.3	63.0	65.0	61.0	61.3	69.1	67.5	66.8	68.4	69.2
0.1i Healthy life expectancy at birth (Female)	2010 - 12	64.1	67.9	66.5	68.7	65.2	67.2	63.5	66.0	62.3	65.4	69.3	61.5	67.2	61.3	63.6	69.1	68.8	67.4	69.9	71.0
0.1ii Life Expectancy at birth (Male)	2010 - 12	79.2	80.8	78.7	81.0	79.8	81.0	80.0	79.9	78.5	78.7	80.5	78.2	78.4	78.5	78.5	81.3	80.8	80.5	81.1	81.6
0.1ii Life Expectancy at birth (Female)	2010 - 12	83.0	84.0	83.0	84.5	83.6	84.3	83.5	83.4	82.2	82.5	84.0	82.6	82.7	82.7	82.7	84.5	84.6	83.8	84.6	84.5
0.1ii Life Expectancy at 65 (Male)	2010 - 12	18.6	19.5	18.3	19.6	19.2	19.5	18.9	18.8	17.7	17.9	19.3	17.6	18.0	18.0	18.3	19.7	19.4	19.3	19.6	19.8
0.1ii Life Expectancy at 65 (Female)	2010 - 12	21.1	21.6	21.3	22.3	21.7	21.9	21.5	21.3	20.4	20.6	21.8	20.8	20.9	21.1	21.0	22.0	22.5	21.7	22.0	21.8
0.2i Slope index of inequality in life expectancy at birth based on national deprivation deciles within England (Male)	2010 - 12	9.2																			
0.2i Slope index of inequality in life expectancy at birth based on national deprivation deciles within England (Female)	2010 - 12	6.8																			
0.2ii Number of upper tier local authorities for which the local slope index of inequality in life expectancy (as defined in 0.2iii) has decreased (Male)	2010 - 12	73																			
0.2ii Number of upper tier local authorities for which the local slope index of inequality in life expectancy (as defined in 0.2iii) has decreased (Female)	2010 - 12	73																			
0.2iii Slope index of inequality in life expectancy at birth within English local authorities, based on local deprivation deciles within each area (Male)	2010 - 12	-	7.4	8.7	7.8	8.2	6.7	5.1	7.1	6.3	7.1	6.2	7.9	9.2	6.2	8.9	6.4	6.4	8.0	7.0	5.5
0.2iii Slope index of inequality in life expectancy at birth within English local authorities, based on local deprivation deciles within each area (Female)	2010 - 12	-	2.8	6.0	4.8	5.4	4.8	2.8	4.8	4.8	5.3	2.8	6.1	6.3	3.1	4.5	4.4	4.4	6.7	3.7	4.5
0.2iv Gap in life expectancy at birth between each local authority and England as a whole (Male)	2010 - 12	0.0	1.6	-0.5	1.8	0.6	1.8	0.8	0.7	-0.7	-0.5	1.3	-1.0	-0.8	-0.7	-0.7	2.1	1.6	1.3	1.9	2.4

Comparison with respect to England value / goal

Lower
Similar
Higher
Better
Similar
Worse
Not compared

Overarching indicators continued

Indicator	Period	England	Bracknell F	Brig & Hov	Bucks	East Sussex	Hants	IoW	Kent	Medway	Milt Keynes	Oxon	Portsmouth	Reading	Slough	Southampton	Surrey	W Berks	W Sussex	Win & Maid	Wokingham	
0.2iv Gap in life expectancy at birth between each local authority and England as a whole (Female)	2010 - 12	0.0	1.0	0.0	1.5	0.6	1.3	0.5	0.4	-0.8	-0.5	1.0	-0.4	-0.3	-0.3	-0.3	1.5	1.6	0.8	1.6	1.5	
0.2v Slope index of inequality in healthy life expectancy at birth based on national deprivation deciles within England (Male)	2010 - 12	19.4																				
0.2v Slope index of inequality in healthy life expectancy at birth based on national deprivation deciles within England (Female)	2010 - 12	19.8																				

Wider determinants of health

1.01i Children in poverty (all dependent children under 20)	2011	20.1	11.4	19.6	10.2	17.4	11.9	20.3	17.5	20.8	19.6	11.9	24.4	20.8	21.6	25.3	10.0	10.8	13.0	9.7	6.6
1.01ii Children in poverty (under 16s)	2011	20.6	11.9	19.7	10.5	18.1	12.4	21.1	18.3	21.6	20.2	12.4	25.2	21.2	21.7	25.9	10.3	11.2	13.5	9.9	6.9
1.02i School Readiness: The percentage of children achieving a good level of development at the end of reception	2012/13	51.7	57.8	44.8	54.9	43.6	58.9	45.1	63.4	57.1	49.2	47.9	54.7	51.1	49.9	50.8	51.9	60.7	52.4	55.4	47.4
1.02i School Readiness: The percentage of children with free school meal status achieving a good level of development at the end of reception	2012/13	36.2	34.4	26.5	31.8	26.7	37.4	33.8	47.7	41.5	31.9	26.7	45.8	40.3	38.5	37.9	27.9	40.9	33.2	35.1	25.6
1.02ii School Readiness: The percentage of Year 1 pupils achieving the expected level in the phonics screening check	2012/13	69.1	68.9	63.8	65.9	62.7	70.9	63.3	67.7	62.4	69.0	68.6	66.8	65.1	69.9	70.5	70.5	67.5	64.7	69.5	62.2
1.02ii School Readiness: The percentage of Year 1 pupils with free school meal status achieving the expected level in the phonics screening check	2012/13	55.8	49.7	46.8	45.2	47.3	51.3	49.0	50.4	45.7	54.0	48.3	56.1	47.3	61.1	62.0	45.7	42.1	44.7	41.2	37.2
1.03 Pupil absence	2012/13	5.26	4.66	5.65	5.10	5.81	5.17	6.17	5.30	5.29	5.05	5.20	6.04	5.14	4.79	5.93	4.85	4.78	5.26	4.88	4.65
1.04 First time entrants to the youth justice system	2013	441	339	476	242	358	388	754	479	435	483	395	532	499	534	826	187	401	458	281	289
1.05 16-18 year olds not in education employment or training	2013	5.3	4.0	6.9	3.5	7.9	5.5	4.3	5.8	6.3	4.7	4.8	7.7	6.3	6.1	5.6	1.8	3.1	4.9	4.1	3.1
1.06i Adults with a learning disability who live in stable and appropriate accommodation (Persons)	2012/13	73.5	86.8	78.1	73.2	60.2	72.0	64.8	70.1	66.7	80.8	81.8	68.7	69.8	78.5	79.9	64.9	76.7	71.1	67.5	72.1

Comparison with respect to England value / goal

Lower
Similar
Higher
Better
Similar
Worse
Not compared

Wokingham

Wider determinants of health continued

Indicator	Period	England	Bracknell F	Brig & Hov	Bucks	East Sussex	Hants	IoW	Kent	Medway	Milt Keynes	Oxon	Portsmouth	Reading	Slough	Southampton	Surrey	W Berks	W Sussex	Win & Maid	Wokingham	
1.06i	Adults with a learning disability who live in stable and appropriate accommodation (Male)	2012/13	73.2	84.5	81.6	69.9	57.6	71.7	65.2	68.7	69.5	85.3	81.8	71.5	67.3	76.8	77.9	65.6	74.6	69.7	67.9	72.9
1.06i	Adults with a learning disability who live in stable and appropriate accommodation (Female)	2012/13	74.0	91.2	73.1	77.2	63.7	72.5	64.1	72.0	62.5	75.9	81.8	64.9	72.9	81.0	82.5	63.9	79.5	72.9	67.1	70.7
1.06ii	% of adults in contact with secondary mental health services who live in stable and appropriate accommodation (Persons)	2012/13	58.5	86.2	58.4	65.9	35.1	27.6	25.1	81.5	83.3	66.9	57.5	60.9	85.7	85.1	27.4	44.4	80.4	65.0	80.4	94.1
1.06ii	% of adults in contact with secondary mental health services who live in stable and appropriate accommodation (Male)	2012/13	57.3	85.7	57.5	66.2	35.2	24.7	21.3	79.8	82.2	61.2	59.9	61.9	82.2	84.2	26.8	41.4	74.9	66.1	86.4	92.0
1.06ii	% of adults in contact with secondary mental health services who live in stable and appropriate accommodation (Female)	2012/13	59.8	86.7	59.2	65.6	35.0	30.5	29.9	83.5	84.4	72.6	55.1	59.7	90.6	86.4	28.0	47.5	89.1	64.0	73.3	96.2
1.07	People in prison who have a mental illness or a significant mental illness	2012/13	4.35																			
1.08i	Gap in the employment rate between those with a long-term health condition and the overall employment rate	2012	7.1	4.8	9.5	3.6	8.6	3.0	8.6	5.6	7.6	8.9	8.4	3.1	4.6	4.5	5.1	1.1	-1.9	5.1	0.5	-1.8
1.08ii	Gap in the employment rate between those with a learning disability and the overall employment rate	2013/14	65.1	64.2	58.9	60.8	66.2	72.5	63.4	66.1	68.0	62.2	67.3	62.1	65.9	65.1	62.2	66.8	79.1	77.1	63.3	63.3
1.08iii	Gap in the employment rate for those in contact with secondary mental health services and the overall employment rate	2012/13	62.3	62.0	63.9	59.7	65.7	70.5	- *	64.0	61.8	63.4	62.4	68.1	57.6	62.2	65.7	68.2	67.3	65.6	62.5	60.7
1.09i	Sickness absence - The percentage of employees who had at least one day off in the previous week	2010 - 12	2.5	3.4	2.1	2.7	2.9	2.7	3.9	2.5	2.0	2.0	2.7	2.9	1.9	2.8	2.9	2.2	2.3	2.2	2.0	2.7
1.09ii	Sickness absence - The percent of working days lost due to sickness absence	2010 - 12	1.6	1.8	1.3	1.5	1.5	1.6	2.8	1.6	1.7	0.9	1.7	1.8	1.2	1.8	1.7	1.4	1.6	1.2	1.1	1.4
1.10	Killed and seriously injured (KSI) casualties on England's roads	2011 - 13	39.7	25.2	57.7	42.4	59.3	54.0	65.1	36.9	21.3	37.0	49.9	61.6	30.1	32.9	53.9	51.2	45.5	53.7	39.8	29.1
1.11	Domestic Abuse	2012/13	18.8	19.4	13.7	19.4	13.7	16.7	16.7	17.3	17.3	19.4	19.4	16.7	19.4	19.4	16.7	14.1	19.4	13.7	19.4	19.4
1.12i	Violent crime (including sexual violence) - hospital admissions for violence	2010/11 - 12/13	57.6	24.1	53.4	25.2	31.3	34.1	43.4	37.5	37.6	54.9	21.8	56.8	23.3	63.3	88.9	25.0	18.2	37.0	28.3	9.3

Comparison with respect to England value / goal

Lower
Similar
Higher
Better
Similar
Worse
Not compared

Note: * - Disclosure control applied

www.phoutcomes.info

Wider determinants of health continued

Indicator	Period	England	Bracknell F	Brig & Hov	Bucks	East Sussex	Hants	IoW	Kent	Medway	Milt Keynes	Oxon	Portsmouth	Reading	Slough	Southampton	Surrey	W Berks	W Sussex	Win & Maid	Wokingham
1.12ii Violent crime (including sexual violence) - violence offences per 1,000 population	2013/14	11.1	7.8	11.8	7.0	8.4	8.7	10.7	14.3	17.0	11.7	6.9	18.4	13.3	16.1	18.9	7.7	8.9	9.1	8.3	4.6
1.12iii - Violent crime (including sexual violence) - Rate of sexual offences per 1,000 population	2013/14	1.01	0.92	1.28	0.99	0.91	0.76	0.98	1.14	1.31	1.20	0.93	1.13	1.51	1.59	1.46	0.51	0.98	0.86	0.85	0.57
1.13i Re-offending levels - percentage of offenders who re-offend	2011	26.9	21.1	27.2	22.6	25.3	24.3	28.3	23.5	23.4	26.1	27.2	29.6	29.7	28.3	30.2	23.6	25.7	24.8	22.2	23.4
1.13ii Re-offending levels - average number of re-offences per offender	2011	0.78	0.60	0.94	0.59	0.79	0.74	0.79	0.65	0.74	0.77	0.79	0.96	0.90	0.90	0.97	0.72	0.70	0.78	0.55	0.57
1.14i The rate of complaints about noise	2012/13	7.5 ^	5.2	12.6	3.8 ^	6.0 ^	4.4 ^	4.4	5.6 ^	6.1	8.9	5.6 ^	7.0 ^	4.6	3.6 ^	10.3 ^	4.8 ^	3.9	4.6 ^	4.4 ^	3.4
1.14ii The percentage of the population exposed to road, rail and air transport noise of 65dB(A) or more, during the daytime	2011	5.2	2.6	6.8	5.2	5.5	2.7	3.8	4.6	4.2	1.1	3.4	8.3	8.2	8.5	6.4	5.8	4.4	4.2	6.3	3.9
1.14iii The percentage of the population exposed to road, rail and air transport noise of 55 dB(A) or more during the night-time	2011	8.0	4.2	8.4	9.6	6.9	6.1	4.7	7.5	6.5	2.9	5.4	14.3	11.3	14.8	9.9	12.0	8.8	6.4	11.2	11.3
1.15i Statutory homelessness - homelessness acceptances	2013/14	2.3	2.3	4.1	1.3	1.3	1.0	1.4	1.5 ^	3.3	5.0	1.2	5.3	3.9	1.4	1.7	1.1	0.8	1.4	- x	0.4
1.15ii Statutory homelessness - households in temporary accommodation	2013/14	2.6	1.3	10.3	0.7	0.7	1.4	2.5	0.8	1.4	1.4	0.7	0.6	1.8	1.6	1.3	1.3	0.7	1.4	- x	0.1
1.16 Utilisation of outdoor space for exercise/health reasons	Mar 2013 - Feb 2014	17.1	- x	26.6	28.8	27.6	24.1	26.9	12.1	8.1	26.5	15.7	20.3	10.1 \$	7.2	20.2 \$	17.6	19.5	27.2	- x	- x
1.17 Fuel Poverty	2012	10.4	4.9	10.7	7.6	8.4	6.3	9.5	8.5	8.6	5.4	8.0	10.7	10.7	10.0	10.1	7.3	6.6	7.1	7.4	5.6
1.18i Social Isolation: % of adult social care users who have as much social contact as they would like	2012/13	43.2	38.6	46.9	41.7	43.4	44.9	46.4	44.0	43.1	42.5	46.0	48.6 \$	43.9	- x	40.8	42.9	37.8	46.9	42.6	46.6
1.18ii Social Isolation: % of adult carers who have as much social contact as they would like	2012/13	41.3	44.7	34.1	39.5	35.9	25.3	48.1	33.9	44.0 \$	34.1 \$	41.6	57.3	52.2	46.4 \$	47.4	35.9	47.7	31.9	31.6	42.2
1.19i Older people's perception of community safety - safe in local area during the day	2012/13	97.5																			
1.19ii Older people's perception of community safety - safe in local area after dark	2012/13	61.9																			

Comparison with respect to England value / goal

Lower
Similar
Higher
Better
Similar
Worse
Not compared

Note: ^ - Value estimated, x - Value Missing, \$ - Data quality note

Wokingham

Wider determinants of health continued

Indicator	Period	England	Bracknell F	Brig & Hov	Bucks	East Sussex	Hants	IoW	Kent	Medway	Milt Keynes	Oxon	Portsmouth	Reading	Slough	Southampton	Surrey	W Berks	W Sussex	Win & Maid	Wokingham	
1.19iii Older people's perception of community safety - safe in own home at night	2012/13	94.3																				

Health improvement

2.01	Low birth weight of term babies	2012	2.8	1.6	2.5	2.2	2.3	2.1	1.5	2.4	2.8	2.8	2.7	2.5	2.8	4.0	2.9	2.1	1.6	2.1	3.0	1.7
2.02i	Breastfeeding - Breastfeeding initiation	2013/14	73.9	82.6	87.8	76.5	77.3	77.8	- x	71.3	68.8	- x	80.6	66.1	78.5	76.8	74.5	- x	- x	- x	83.7	- x
2.02ii	Breastfeeding - Breastfeeding prevalence at 6-8 weeks after birth	2013/14	- x	- x	- x	- x	- x	49.1	44.4	- x	- x	51.5	59.2	- x	- x	- x	- x	- x	- x	- x	- x	- x
2.03	Smoking status at time of delivery	2013/14	12.0 \$	9.2	6.3	7.9	13.6	11.2	18.4	13.0	17.8	11.1	- x	15.4	8.4	10.4	16.4	6.6	8.7	8.7	8.3	5.9
2.04	Under 18 conceptions	2012	27.7	17.3	29.1	17.3	25.0	21.1	33.6	25.9	33.6	25.5	20.7	39.9	35.9	21.0	34.3	18.0	19.7	22.5	14.6	15.4
2.04	Under 18 conceptions: conceptions in those aged under 16	2012	5.6	- *	7.3	3.5	4.5	4.0	6.7	4.5	7.7	3.6	4.5	8.1	9.1	3.0	7.1	2.9	4.8	5.9	3.0	- *
2.06i	Excess weight in 4-5 and 10-11 year olds - 4-5 year olds	2012/13	22.2	19.3	21.3	19.1	20.9	20.1	24.0	21.7	23.3	22.1	18.3	24.2	22.0	22.1	22.3	17.7	18.9	20.7	16.1	16.6
2.06ii	Excess weight in 4-5 and 10-11 year olds - 10-11 year olds	2012/13	33.3	27.1	26.6	28.2	29.9	27.9	32.8	32.7	32.7	32.4	28.5	35.6	34.5	34.1	34.4	26.6	29.1	28.4	27.6	26.2
2.07i	Hospital admissions caused by unintentional and deliberate injuries in children (aged 0-14 years)	2012/13	103.8	89.3	110.8	90.0	115.8	96.6	165.8	95.3	120.9	88.5	88.5	104.8	85.3	101.4	130.0	97.0	77.4	107.6	99.7	73.2
2.07i	Hospital admissions caused by unintentional and deliberate injuries in children (aged 0-4 years)	2012/13	134.7	108.7	124.4	109.2	153.9	130.4	282.4	127.6	156.0	119.4	111.5	127.6	105.8	135.8	181.0	122.9	77.9	133.8	135.6	89.7
2.07ii	Hospital admissions caused by unintentional and deliberate injuries in young people (aged 15-24)	2012/13	130.7	116.0	116.2	98.6	116.2	144.3	151.9	137.2	97.5	111.7	141.0	121.8	66.2	132.6	141.2	115.2	95.2	161.0	135.8	85.5
2.08	Emotional well-being of looked after children	2012/13	14.0	15.3	15.2	13.0	14.3	13.8	15.4	15.4	15.5	13.7	16.9	14.3	17.9	14.2	- x	14.0	16.4	- x	13.9	16.1
2.09ii	Smoking prevalence age 15 years - regular smokers	2013	8																			
2.09iii	Smoking prevalence age 15 years - occasional smokers	2013	10																			
2.12	Excess Weight in Adults	2012	63.8	66.2	49.2	64.4	65.0	65.1	64.9	64.6	66.1	72.5	60.7	57.9	55.3	64.1	64.8	60.8	65.5	64.4	55.9	57.4

Comparison with respect to England value / goal

Lower
Similar
Higher
Better
Similar
Worse
Not compared

Note: * - Disclosure control applied, x - Value Missing, \$ - Data quality note

Health improvement continued

Indicator	Period	England	Bracknell F	Brig & Hov	Bucks	East Sussex	Hants	IoW	Kent	Medway	Milt Keynes	Oxon	Portsmouth	Reading	Slough	Southampton	Surrey	W Berks	W Sussex	Win & Maid	Wokingham	
2.13i	Percentage of physically active and inactive adults - active adults	2013	55.6	61.5	61.7	61.2	56.5	57.6	54.3	56.3	46.4	55.4	62.0	49.7	55.9	52.3	55.6	60.4	54.3	58.0	61.6	61.8
2.13ii	Percentage of active and inactive adults - inactive adults	2013	28.9	23.1	23.2	24.3	28.2	26.9	32.0	28.1	35.8	25.4	23.1	32.4	29.9	31.0	26.6	23.5	27.2	26.2	23.7	22.5
2.14	Smoking Prevalence	2013	18.4	16.0	25.2	14.5	18.4	15.4	19.1	19.0	21.8	19.0	14.7	22.3	17.1	22.0	21.5	14.8	15.4	17.2	15.5	10.5
2.14	Smoking prevalence - routine & manual	2013	28.6	25.9	36.3	26.4	27.9	27.8	29.3	28.4	33.8	30.2	28.3	35.7	31.3	25.1	30.8	32.7	25.9	26.9	36.2	22.5
2.15i	Successful completion of drug treatment - opiate users	2013	7.8	14.4	6.5	7.2	8.1	10.6	15.8	10.3	6.2	12.0	5.3	8.5	6.1	11.3	9.1	10.6	5.6	9.2	7.7	8.2
2.15ii	Successful completion of drug treatment - non-opiate users	2013	37.7	34.8	39.2	42.5	54.2	46.0	32.5	42.1	33.1	26.1	7.6	32.9	41.0	47.8	48.3	41.4	33.3	48.0	34.5	35.5
2.16	People entering prison with substance dependence issues who are previously not known to community treatment	2012/13	46.9	36.5	51.9	51.3	52.2	52.8	38.8	57.4	44.0	53.6	47.5	53.0	54.9	50.4	52.3	55.4	55.7	60.4	32.1	- *
2.17	Recorded diabetes	2012/13	6.01 ^	5.07 ^	4.16 ^	5.38 ^	5.82 ^	5.47 ^	6.24 ^	6.02 ^	6.71 ^	5.14 ^	4.69 ^	5.29 ^	4.47 ^	7.78 ^	5.37 ^	4.89 ^	4.37 ^	5.76 ^	4.83 ^	4.27 ^
2.18	Alcohol related admissions to hospital (Persons)	2012/13	637	436	664	437	543	467	541	565	483	611	566	609	511	542	726	445	409	518	439	365
2.18	Alcohol related admissions to hospital (Male)	2012/13	829	573	880	534	689	608	678	735	640	817	690	846	679	778	970	592	510	668	613	454
2.18	Alcohol related admissions to hospital (Female)	2012/13	465	313	461	354	418	342	423	414	340	432	456	388	359	329	499	318	320	390	282	291
2.19	Cancer diagnosed at early stage (Experimental Statistics)	2012	41.6	- x	37.9	- x	37.6	46.1	51.1	41.4	46.2	- x	44.1	40.1	- x	- x	44.8	- x	- x	- x	- x	46.7
2.20i	Cancer screening coverage - breast cancer	2014	75.9	79.2	69.4	80.1	75.9	78.4	80.1	77.6	77.2	78.4	78.9	70.5	73.3	68.3	69.5	75.8	81.8	76.8	78.6	81.7
2.20ii	Cancer screening coverage - cervical cancer	2014	74.2	78.3	71.3	76.1	76.5	77.0	74.9	77.1	75.4	73.4	74.1	70.7	70.6	68.8	70.6	74.3	78.1	75.7	75.5	78.4
2.21vii	Access to non-cancer screening programmes - diabetic retinopathy	2012/13	79.1	74.7 ^	78.9 ^	84.8 ^	82.5 ^	76.8 ^	74.3 ^	85.4 ^	85.9 ^	81.5 ^	- x	85.2 ^	73.3 ^	74.7 ^	69.1 ^	78.3 ^	73.3 ^	84.5 ^	74.7 ^	73.3 ^
2.22iii	Cumulative % of the eligible population aged 40-74 offered an NHS Health Check	2013/14	18.4	14.3	9.3	20.3	17.3	19.6	23.4	21.4	22.6	28.9	22.2	25.6	25.6	21.9	24.8	2.0	19.1	13.4	14.7	8.2
2.22iv	Cumulative % of the eligible population aged 40-74 offered an NHS Health Check who received an NHS Health Check	2013/14	49.0	73.5	60.3	44.4	57.2	24.6	27.5	34.7	50.3	37.6	45.9	14.6	47.7	49.1	28.2	42.2	41.9	44.6	41.5	49.3
2.22v	Cumulative % of the eligible population aged 40-74 who received an NHS Health check	2013/14	9.0	10.5	5.6	9.0	9.9	4.8	6.4	7.4	11.4	10.9	10.2	3.7	12.2	10.8	7.0	0.9	8.0	6.0	6.1	4.0

Comparison with respect to England value / goal

Lower
Similar
Higher
Better
Similar
Worse
Not compared

Note: * - Disclosure control applied, ^ - Value estimated, x - Value Missing

Wokingham

Health improvement continued

Indicator	Period	England	Bracknell F	Brig & Hov	Bucks	East Sussex	Hants	IoW	Kent	Medway	Milt Keynes	Oxon	Portsmouth	Reading	Slough	Southampton	Surrey	W Berks	W Sussex	Win & Maid	Wokingham
2.23i Self-reported well-being - people with a low satisfaction score	2012/13	5.8	- x	4.9	4.1	6.9	4.5	7.4	5.6	7.5	5.8	- x	6.2	4.4	6.8	4.4	3.4	4.4	4.8	- x	4.0
2.23ii Self-reported well-being - people with a low worthwhile score	2012/13	4.4	- x	5.3	- x	3.8	2.9	4.5	4.0	5.5	- x	- x	- x	3.6	- x	3.7	3.2	- x	- x	- x	- x
2.23iii Self-reported well-being - people with a low happiness score	2012/13	10.4	9.9	12.1	8.9	10.3	8.4	9.8	9.9	11.6	12.7	9.6	12.7	7.6	12.9	10.1	7.2	8.5	10.2	8.7	7.8
2.23iv Self-reported well-being - people with a high anxiety score	2012/13	21.0	21.1	25.4	21.7	19.5	17.4	19.7	21.7	19.4	25.4	18.2	17.5	22.0	25.2	23.0	20.7	18.7	22.8	22.9	21.9
2.23v Average Warwick-Edinburgh Mental Well-Being Scale (WEMWBS) score	2010 - 12	37.7																			
2.24i Injuries due to falls in people aged 65 and over (Persons)	2012/13	2011	2048	2335	1533	1747	1907	1547	2096	1941	1989	2105	2363	1585	2190	2733	1956	1381	2086	2011	1318
2.24i Injuries due to falls in people aged 65 and over (males/females) (Male)	2012/13	1602	1652	2020	1232	1286	1526	1234	1679	1545	1684	1646	1796	1237	1650	2366	1472	1016	1654	1662	998
2.24i Injuries due to falls in people aged 65 and over (males/females) (Female)	2012/13	2420	2444	2651	1833	2208	2289	1861	2513	2338	2295	2563	2930	1932	2730	3099	2441	1747	2518	2360	1638
2.24ii Injuries due to falls in people aged 65 and over - aged 65-79	2012/13	975	1054	1228	698	801	870	778	976	892	942	1006	1288	755	991	1482	861	637	967	899	558
2.24iii Injuries due to falls in people aged 65 and over - aged 80+	2012/13	5015	4930	5546	3952	4492	4917	3778	5343	4986	5026	5290	5479	3991	5667	6361	5133	3541	5329	5237	3521

Health protection

3.01 Fraction of mortality attributable to particulate air pollution	2012	5.1	5.0	5.0	5.2	4.5	4.9	4.1	5.0	5.5	5.3	5.1	5.3	5.7	6.4	5.7	5.2	5.2	4.7	5.6	5.3
3.02i Chlamydia screening detection rate (15-24 year olds) - Old NCSP data	2011	2092	1583	2031	1346	1943	1955	1969	1620	1630	2410	1323	2707	2492	1795	2310	1394	1597	1562	1155	1452
			< 2000	2000 to 2400	> 2400																
3.02ii Chlamydia detection rate (15-24 year olds) - CTAD (Persons)	2013	2016	1829	3133	1232	1761	1556	1744	1563	1758	2720	1267	1925	2888	1759	1543	1233	840	1808	1352	966
			< 1900	1900 to 2300	> 2300																
3.02ii Chlamydia detection rate (15-24 year olds) - CTAD (Male)	2013	1387	1194	2201	902	1123	1066	1130	935	1059	1971	668	1396	1823	1163	1063	877	599	1283	1070	650
			< 1900	1900 to 2300	> 2300																

Comparison with respect to England value / goal



Note: x - Value Missing

www.phoutcomes.info

Health protection continued

Indicator	Period	England	Bracknell F	Brig & Hov	Bucks	East Sussex	Hants	IoW	Kent	Medway	Milt Keynes	Oxon	Portsmouth	Reading	Slough	Southampton	Surrey	W Berks	W Sussex	Win & Maid	Wokingham
3.02ii Chlamydia detection rate (15-24 year olds) - CTAD (Female) < 1900 1900 to 2300 ≥ 2300	2013	2634	2525	4046	1572	2430	2044	2432	2189	2485	3428	1453	2529	3929	2377	2012	1571	1094	2361	1659	1312
3.03i Population vaccination coverage - Hepatitis B (1 year old)	2012/13	- x	100 ^	100 ^	90.1 ^	- x	- x	- ^	64.9 ^	75.0 ^	93.1 ^	99.8 ^	81.8 ^	100 ^	100 ^	100 ^	100 ^	100 ^	90.0 ^	100 ^	100 ^
3.03i Population vaccination coverage - Hepatitis B (2 years old)	2012/13	- x	84.4 ^	- *	51.2 ^	- x	- x	- ^	54.2 ^	57.9 ^	86.4 ^	99.4 ^	100 ^	82.6 ^	84.4 ^	81.8 ^	98.5 ^	82.6 ^	66.7 ^	84.4 ^	82.6 ^
3.03iii Population vaccination coverage - Dtap / IPV / Hib (1 year old) < 90 > 90	2012/13	94.7 ^	93.1 ^	93.8 ^	96.6 ^	94.9 ^	95.1 ^	91.9 ^	96.6 ^	96.8 ^	94.9 ^	96.9 ^	94.1 ^	94.2 ^	93.1 ^	95.3 ^	87.8 ^	94.2 ^	95.8 ^	93.1 ^	94.2 ^
3.03iii Population vaccination coverage - Dtap / IPV / Hib (2 years old) < 90 > 90	2012/13	96.3 ^	94.4 ^	94.4 ^	96.9 ^	96.4 ^	96.4 ^	92.3 ^	98.0 ^	98.1 ^	96.9 ^	97.5 ^	95.9 ^	96.6 ^	94.4 ^	97.0 ^	89.4 ^	96.6 ^	96.8 ^	94.4 ^	96.6 ^
3.03iv Population vaccination coverage - MenC < 90 > 90	2012/13	93.9 ^	92.3 ^	93.0 ^	95.7 ^	94.4 ^	94.6 ^	94.8 ^	96.1 ^	96.5 ^	93.7 ^	93.9 ^	93.6 ^	92.9 ^	92.3 ^	94.3 ^	87.1 ^	92.9 ^	95.1 ^	92.3 ^	92.9 ^
3.03v Population vaccination coverage - PCV < 90 > 90	2012/13	94.4 ^	92.7 ^	93.0 ^	96.2 ^	94.2 ^	94.9 ^	94.5 ^	96.4 ^	96.4 ^	94.5 ^	94.4 ^	94.2 ^	93.5 ^	92.7 ^	94.9 ^	87.2 ^	93.5 ^	95.1 ^	92.7 ^	93.5 ^
3.03vi Population vaccination coverage - Hib / MenC booster (2 years old) < 90 > 90	2012/13	92.7 ^	88.6 ^	91.1 ^	95.2 ^	93.0 ^	93.7 ^	92.0 ^	95.4 ^	95.2 ^	93.0 ^	95.2 ^	92.6 ^	93.5 ^	88.6 ^	93.1 ^	83.8 ^	93.5 ^	94.9 ^	88.6 ^	93.5 ^
3.03vi Population vaccination coverage - Hib / Men C booster (5 years) < 90 > 90	2012/13	91.5 ^	90.2 ^	85.3 ^	96.0 ^	84.3 ^	89.6 ^	87.8 ^	94.1 ^	93.5 ^	92.1 ^	95.0 ^	91.7 ^	91.1 ^	90.2 ^	90.5 ^	83.4 ^	91.1 ^	81.8 ^	90.2 ^	91.1 ^
3.03vii Population vaccination coverage - PCV booster < 90 > 90	2012/13	92.5 ^	88.5 ^	89.5 ^	95.5 ^	92.4 ^	93.7 ^	91.1 ^	95.9 ^	94.4 ^	93.5 ^	95.3 ^	92.8 ^	93.6 ^	88.5 ^	94.6 ^	84.3 ^	93.6 ^	90.9 ^	88.5 ^	93.6 ^
3.03viii Population vaccination coverage - MMR for one dose (2 years old) < 90 > 90	2012/13	92.3 ^	89.2 ^	92.0 ^	95.2 ^	93.0 ^	94.0 ^	91.4 ^	95.4 ^	95.6 ^	93.5 ^	95.1 ^	93.5 ^	94.5 ^	89.2 ^	94.1 ^	83.6 ^	94.5 ^	94.5 ^	89.2 ^	94.5 ^
3.03ix Population vaccination coverage - MMR for one dose (5 years old) < 90 > 90	2012/13	93.9 ^	91.9 ^	93.0 ^	95.5 ^	93.4 ^	93.3 ^	93.1 ^	96.0 ^	94.0 ^	94.8 ^	96.7 ^	92.9 ^	95.1 ^	91.9 ^	95.3 ^	86.3 ^	95.1 ^	93.7 ^	91.9 ^	95.1 ^

Comparison with respect to England value / goal

Lower

Similar

Higher

Better

Similar

Worse

Not compared

Note: * - Disclosure control applied, ^ - Value estimated, x - Value Missing

Wokingham

Health protection continued

Indicator	Period	England	Bracknell F	Brig & Hov	Bucks	East Sussex	Hants	IoW	Kent	Medway	Milt Keynes	Oxon	Portsmouth	Reading	Slough	Southampton	Surrey	W Berks	W Sussex	Win & Maid	Wokingham
3.03x Population vaccination coverage - MMR for two doses (5 years old) <small>< 90 ≥ 90</small>	2012/13	87.7 ^	82.3 ^	87.0 ^	91.9 ^	86.8 ^	90.4 ^	84.3 ^	92.2 ^	89.8 ^	89.9 ^	93.1 ^	85.2 ^	90.9 ^	82.3 ^	91.2 ^	76.4 ^	90.9 ^	88.0 ^	82.3 ^	90.9 ^
3.03xii Population vaccination coverage - HPV <small>< previous years England average ≥ previous years England average</small>	2012/13	86.1 ^	85.9 ^	88.9 ^	88.4 ^	85.8 ^	89.3 ^	84.6 ^	84.1 ^	78.9 ^	85.1 ^	91.2 ^	87.4 ^	84.4 ^	85.9 ^	89.1 ^	65.0 ^	84.4 ^	87.0 ^	85.9 ^	84.4 ^
3.03xiii Population vaccination coverage - PPV <small>< previous years England average ≥ previous years England average</small>	2012/13	69.1 ^	69.5 ^	67.9 ^	64.1 ^	69.3 ^	74.2 ^	71.0 ^	70.0 ^	70.7 ^	71.2 ^	70.2 ^	67.8 ^	74.6 ^	69.5 ^	70.5 ^	63.3 ^	74.6 ^	68.0 ^	69.5 ^	74.6 ^
3.03xiv Population vaccination coverage - Flu (aged 65+) <small>< 75 ≥ 75</small>	2012/13	73.4 ^	71.6 ^	69.8 ^	73.3 ^	71.7 ^	74.8 ^	72.1 ^	71.4 ^	73.4 ^	71.8 ^	75.7 ^	75.2 ^	75.9 ^	71.6 ^	75.5 ^	68.8 ^	75.9 ^	71.9 ^	71.6 ^	75.9 ^
3.03xv Population vaccination coverage - Flu (at risk individuals) <small>< 75 ≥ 75</small>	2012/13	51.3 ^	52.8 ^	51.1 ^	48.3 ^	50.7 ^	55.4 ^	53.6 ^	48.7 ^	52.8 ^	51.4 ^	51.5 ^	52.9 ^	56.4 ^	52.8 ^	53.2 ^	45.3 ^	56.4 ^	47.3 ^	52.8 ^	56.4 ^
3.04 People presenting with HIV at a late stage of infection <small>< 25 25 to 50 ≥ 50</small>	2010 - 12	48.3	63.6	35.9	49.2	39.1	52.3	0.0	46.8	34.6	70.1	45.8	54.4	45.7	55.7	48.9	49.3	50.0	48.2	55.6	66.7
3.05i Treatment completion for TB <small>< 85 ≥ 85</small>	2012	82.8	- x	83.3	80.0	92.0	87.3	- x	85.2	92.6	94.6	90.0	94.1	96.1	91.7	88.2	70.2	- x	86.3	- x	- x
3.05ii Incidence of TB	2010 - 12	15.1	8.8	9.5	9.9	5.0	5.4	3.6	7.3	8.3	14.1	10.2	10.2	32.8	56.3	16.5	7.8	4.6	7.1	6.9	8.4
3.06 NHS organisations with a board approved sustainable development management plan	2013/14	41.6	50.0	71.4	28.6	37.5	33.3	25.0	35.7	28.6	60.0	28.6	60.0	42.9	60.0	40.0	36.8	57.1	46.2	33.3	60.0

Healthcare and premature mortality

4.01 Infant mortality	2010 - 12	4.1	4.0	4.3	3.9	3.1	3.1	2.0	3.2	3.3	3.8	3.7	2.3	4.5	5.4	4.1	3.3	3.1	3.6	3.1	2.9
4.02 Tooth decay in children aged 5	2011/12	0.94	0.78	0.35	0.76	0.68	0.50	0.56	0.62	0.63	0.93	0.98	0.78	1.43	1.65	1.14	0.63	0.63	0.42	0.62	0.39
4.03 Mortality rate from causes considered preventable (Persons)	2011 - 13	183.9	157.9	206.1	143.4	169.2	147.6	159.2	171.4	203.2	187.4	150.6	233.7	195.4	203.6	222.6	136.9	160.8	156.6	148.3	132.0
4.03 Mortality rate from causes considered preventable (Male)	2011 - 13	233.1	199.4	260.5	179.8	214.7	185.5	191.8	223.0	256.3	246.2	182.0	296.7	268.7	248.2	281.2	174.3	200.5	199.5	184.9	167.3

Comparison with respect to England value / goal



Note: ^ - Value estimated, x - Value Missing

www.phoutcomes.info

Healthcare and premature mortality continued

Indicator	Period	England	Bracknell F	Brig & Hov	Bucks	East Sussex	Hants	IoW	Kent	Medway	Milt Keynes	Oxon	Portsmouth	Reading	Slough	Southampton	Surrey	W Berks	W Sussex	Win & Maid	Wokingham
4.03 Mortality rate from causes considered preventable (Female)	2011 - 13	138.0	122.1	152.6	110.8	128.5	113.2	126.9	123.6	153.0	133.9	121.3	173.2	127.4	161.6	165.6	102.4	121.9	118.4	113.9	100.3
4.04i Under 75 mortality rate from all cardiovascular diseases (Persons)	2011 - 13	78.2	67.0	71.0	61.3	65.1	58.5	73.9	74.2	77.7	76.4	60.1	105.0	91.1	106.3	93.8	54.4	65.5	63.0	66.7	54.9
4.04i Under 75 mortality rate from all cardiovascular diseases (Male)	2011 - 13	109.5	95.2	98.7	85.6	88.7	82.1	101.6	104.6	108.6	110.4	84.1	147.2	129.9	137.2	127.7	79.3	95.1	90.8	94.0	75.3
4.04i Under 75 mortality rate from all cardiovascular diseases (Female)	2011 - 13	48.6	40.1	43.5	38.4	43.5	36.4	47.7	45.6	47.9	44.4	37.5	63.8	53.0	75.8	61.2	31.1	36.5	37.6	41.1	35.2
4.04ii Under 75 mortality rate from cardiovascular diseases considered preventable (Persons)	2011 - 13	50.9	43.1	42.6	36.6	38.3	38.3	41.8	49.3	55.3	52.0	37.3	69.3	60.3	71.7	60.1	33.3	47.3	40.4	42.8	37.0
4.04ii Under 75 mortality rate from cardiovascular diseases considered preventable (Male)	2011 - 13	76.7	63.3	63.2	55.1	57.4	58.1	67.3	74.6	81.5	81.5	56.9	99.7	95.6	103.4	88.8	51.9	75.3	61.2	62.4	52.9
4.04ii Under 75 mortality rate from cardiovascular diseases considered preventable (Female)	2011 - 13	26.5	23.8	22.0	19.2	20.9	19.8	17.7	25.4	30.0	24.4	18.8	39.4	25.7	40.7	32.3	15.8	19.9	21.4	24.4	21.7
4.05i Under 75 mortality rate from cancer (Persons)	2011 - 13	144.4	130.7	155.2	120.0	142.6	127.8	138.8	136.3	160.8	151.3	131.8	161.8	139.8	146.3	159.9	121.1	133.0	135.6	121.1	120.3
4.05i Under 75 mortality rate from cancer (Male)	2011 - 13	160.9	148.3	172.0	132.0	160.7	143.4	147.4	152.6	183.3	171.6	143.0	173.2	167.4	144.3	179.5	133.3	141.1	148.5	132.7	132.7
4.05i Under 75 mortality rate from cancer (Female)	2011 - 13	129.2	114.7	138.7	109.2	126.4	113.5	130.6	121.3	139.5	132.9	121.6	151.1	113.8	148.8	142.2	110.0	125.2	124.2	110.6	109.2
4.05ii Under 75 mortality rate from cancer considered preventable (Persons)	2011 - 13	83.8	78.7	91.2	67.8	82.1	70.3	78.8	78.2	97.9	82.7	72.5	94.8	75.1	83.8	95.5	67.7	76.7	75.8	69.3	64.1
4.05ii Under 75 mortality rate from cancer considered preventable (Male)	2011 - 13	91.3	84.9	102.1	69.7	89.0	77.4	78.7	86.4	110.2	93.7	73.6	101.3	87.3	71.1	104.5	73.0	78.3	81.2	71.3	70.7
4.05ii Under 75 mortality rate from cancer considered preventable (Female)	2011 - 13	76.9	73.5	80.5	66.4	76.1	64.0	79.0	70.8	86.3	73.1	71.7	88.5	63.9	96.4	87.6	62.8	75.0	71.2	67.5	58.1
4.06i Under 75 mortality rate from liver disease (Persons)	2011 - 13	17.9	12.6	20.5	11.3	14.8	12.8	13.1	15.5	20.0	15.3	14.5	26.1	25.4	19.1	21.6	13.4	11.7	14.2	16.7	13.5
4.06i Under 75 mortality rate from liver disease (Male)	2011 - 13	23.6	- x	26.5	15.4	21.1	16.7	16.7	20.8	26.2	22.6	16.5	32.0	34.0	25.3	33.1	17.4	15.5	18.8	25.6	16.8
4.06i Under 75 mortality rate from liver disease (Female)	2011 - 13	12.5	- x	14.4	7.4	9.0	9.2	- x	10.4	14.0	8.3	12.6	20.0	16.7	- x	- x	9.7	- x	9.9	- x	- x

Comparison with respect to England value / goal

Lower	Similar	Higher	Better	Similar	Worse	Not compared
-------	---------	--------	--------	---------	-------	--------------

Note: x - Value Missing

www.phoutcomes.info

Wokingham

Healthcare and premature mortality continued

Indicator	Period	England	Bracknell F	Brig & Hov	Bucks	East Sussex	Hants	IoW	Kent	Medway	Milt Keynes	Oxon	Portsmouth	Reading	Slough	Southampton	Surrey	W Berks	W Sussex	Win & Maid	Wokingham
4.06ii Under 75 mortality rate from liver disease considered preventable (Persons)	2011 - 13	15.7	11.3	19.1	10.6	13.4	11.1	11.9	13.2	15.4	13.4	12.0	22.4	21.4	13.6	19.1	12.3	10.2	12.8	15.0	11.2
4.06ii Under 75 mortality rate from liver disease considered preventable (Male)	2011 - 13	21.1	-x	25.2	14.4	19.6	15.0	15.8	18.0	18.8	20.5	13.7	28.3	29.5	-x	31.0	16.1	13.5	17.1	22.5	14.8
4.06ii Under 75 mortality rate from liver disease considered preventable (Female)	2011 - 13	10.5	-x	13.0	7.0	7.6	7.5	-x	8.6	12.0	-x	10.3	16.5	-x	-x	-x	8.8	-x	8.9	-x	-x
4.07i Under 75 mortality rate from respiratory disease (Persons)	2011 - 13	33.2	20.9	38.5	19.5	27.4	24.1	23.9	31.2	40.6	39.6	25.9	41.0	35.2	36.0	45.8	24.4	20.5	24.1	27.4	23.5
4.07i Under 75 mortality rate from respiratory disease (Male)	2011 - 13	39.1	26.5	44.0	23.0	32.5	27.1	26.7	38.3	48.7	48.9	30.1	53.2	43.2	50.0	60.0	30.7	25.6	30.3	32.4	26.9
4.07i Under 75 mortality rate from respiratory disease (Female)	2011 - 13	27.6	-x	33.3	16.4	22.7	21.3	21.2	24.7	32.9	31.1	21.9	29.7	27.5	22.5	32.3	18.6	15.6	18.4	22.6	20.4
4.07ii Under 75 mortality rate from respiratory disease considered preventable (Persons)	2011 - 13	17.9	-x	24.4	9.0	15.4	13.5	12.7	16.7	23.1	20.6	12.9	25.4	18.3	20.7	26.8	11.7	10.0	12.1	11.5	8.4
4.07ii Under 75 mortality rate from respiratory disease considered preventable (Male)	2011 - 13	20.4	-x	27.5	10.6	18.4	14.9	12.4	20.8	28.5	24.5	13.9	31.3	20.7	27.3	31.6	15.7	-x	15.2	-x	-x
4.07ii Under 75 mortality rate from respiratory disease considered preventable (Female)	2011 - 13	15.5	-x	21.5	7.6	12.6	12.3	13.0	12.9	18.0	17.2	11.9	19.8	-x	-x	22.4	8.0	-x	9.2	-x	-x
4.08 Mortality from communicable diseases (Persons)	2011 - 13	62.2	74.4	49.9	57.2	57.2	54.3	45.1	64.5	66.1	86.2	55.0	52.5	91.3	72.8	58.0	69.1	71.4	55.9	78.2	69.8
4.08 Mortality from communicable diseases (Male)	2011 - 13	72.1	86.2	62.4	67.4	68.8	59.8	54.8	73.1	71.4	101.8	61.3	63.5	112.5	86.2	70.0	77.4	90.0	63.6	84.6	69.3
4.08 Mortality from communicable diseases (Female)	2011 - 13	56.2	67.3	41.8	51.3	50.6	51.2	37.8	59.4	62.5	77.3	50.7	46.2	75.2	61.1	50.3	63.9	60.1	51.0	72.4	70.7
4.09 Excess under 75 mortality rate in adults with serious mental illness	2011/12	337.4	315.3	291.7	345.0	282.9	343.3	124.7	314.4	336.7	266.4	350.3	332.6	375.9	415.6	387.3	318.5	337.7	343.1	460.9	407.4
4.10 Suicide rate (Persons)	2011 - 13	8.8	8.7	12.9	8.8	11.0	8.0	8.9	9.2	8.3	7.8	8.5	11.6	8.3	9.5	12.1	8.2	9.0	8.3	7.0	-x
4.10 Suicide rate (Male)	2011 - 13	13.8	-x	20.2	13.6	16.1	12.2	15.6	14.6	12.5	12.3	12.9	17.3	12.5	15.6	17.1	12.4	10.5	13.8	-x	-x
4.10 Suicide rate (Female)	2011 - 13	4.0	-x	-x	4.3	6.4	4.1	-x	4.1	-x	-x	4.4	-x	-x	-x	-x	4.2	-x	3.3	-x	-x
4.11 Emergency readmissions within 30 days of discharge from hospital (Persons)	2011/12	11.8	11.6	14.5	10.4	11.0	11.1	9.5	11.9	11.5	12.9	11.4	12.2	11.1	13.4	12.5	11.9	10.0	11.8	10.6	10.2

Comparison with respect to England value / goal



Note: x - Value Missing

www.phoutcomes.info

Healthcare and premature mortality continued

Indicator	Period	England	Bracknell F	Brig & Hov	Bucks	East Sussex	Hants	IoW	Kent	Medway	Milt Keynes	Oxon	Portsmouth	Reading	Slough	Southampton	Surrey	W Berks	W Sussex	Win & Maid	Wokingham	
4.11	Emergency readmissions within 30 days of discharge from hospital (Male)	2011/12	12.1	10.8	14.5	11.1	11.3	11.3	10.1	12.2	12.1	12.9	11.8	12.3	11.3	14.8	12.7	12.1	10.1	11.8	10.7	10.1
4.11	Emergency readmissions within 30 days of discharge from hospital (Female)	2011/12	11.5	12.3	14.7	9.8	10.7	10.9	9.0	11.7	10.9	12.8	11.1	12.1	10.8	12.1	12.5	11.7	9.8	11.9	10.6	10.3
4.12i	Preventable sight loss - age related macular degeneration (AMD)	2012/13	104.4	100.5	98.4	95.8	165.5	127.8	136.1	87.0	76.7	40.7	104.6	186.1	135.4	221.3	186.0	114.6	131.4	48.7	99.2	98.9
4.12ii	Preventable sight loss - glaucoma	2012/13	12.5	- *	9.1	12.0	22.3	12.1	24.1	8.9	8.7	7.2	9.3	5.7	11.4	21.0	18.8	14.8	- *	9.3	10.8	11.2
4.12iii	Preventable sight loss - diabetic eye disease	2012/13	3.5	- *	2.5	4.6	6.7	5.1	- *	2.6	- *	- *	3.5	5.1	6.8	14.0	4.8	2.8	- *	1.6	4.8	- *
4.12iv	Preventable sight loss - sight loss certifications	2012/13	42.3	28.7	31.9	44.4	79.8	51.2	56.9	34.2	23.9	13.5	35.3	49.8	40.7	57.8	65.2	43.0	39.5	23.9	42.5	31.9
4.13	Health related quality of life for older people	2012/13	0.726	0.755	0.729	0.773	0.749	0.764	0.753	0.746	0.728	0.718	0.766	0.714	0.748	0.728	0.735	0.774	0.777	0.760	0.747	0.768
4.14i	Hip fractures in people aged 65 and over	2012/13	568.1	541.9	562.8	518.5	542.6	537.2	541.5	544.0	544.0	573.0	548.7	601.2	589.7	595.6	623.6	570.3	552.4	584.5	543.3	478.8
4.14ii	Hip fractures in people aged 65 and over - aged 65-79	2012/13	237.3	268.6	242.6	199.3	202.9	202.6	195.2	228.5	199.6	210.6	225.9	324.6	254.2	213.8	300.3	215.4	234.1	214.0	186.2	183.8
4.14iii	Hip fractures in people aged 65 and over - aged 80+	2012/13	1528	1334	1491	1444	1528	1508	1546	1459	1543	1624	1485	1403	1563	1703	1561	1600	1476	1659	1579	1334
4.15i	Excess Winter Deaths Index (Single year, all ages)	Aug 2011 - Jul 2012	16.1	15.6	14.9	20.4	17.8	16.8	6.6	15.2	21.5	12.2	21.1	20.5	16.8	21.1	21.9	20.8	18.4	26.0	13.2	8.6
4.15ii	Excess Winter Deaths Index (single year, ages 85+)	Aug 2011 - Jul 2012	22.9	25.0	14.7	34.0	25.9	21.3	14.8	20.6	23.5	17.0	25.4	16.9	28.6	29.4	21.3	26.6	29.9	28.9	6.1	10.6
4.15iii	Excess Winter Deaths Index (3 years, all ages)	Aug 2009 - Jul 2012	16.5	8.4	15.0	17.6	17.9	17.0	17.1	16.3	16.3	14.5	19.7	23.8	27.4	14.1	21.8	17.5	15.4	21.5	14.9	14.8
4.15iv	Excess Winter Deaths Index (3 years, ages 85+)	Aug 2009 - Jul 2012	22.6	11.6	20.0	29.5	24.9	22.3	23.1	23.0	24.3	12.9	24.8	23.4	37.9	25.6	29.8	23.0	26.1	27.3	16.8	19.5
4.16	Estimated diagnosis rate for people with dementia	2012/13	48.7																			

Comparison with respect to England value / goal

Lower	Similar	Higher	Better	Similar	Worse	Not compared
-------	---------	--------	--------	---------	-------	--------------

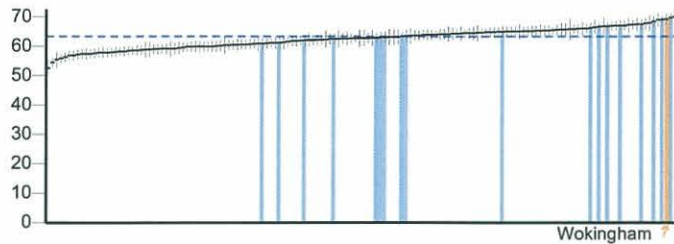
Note: * - Disclosure control applied

www.phoutcomes.info

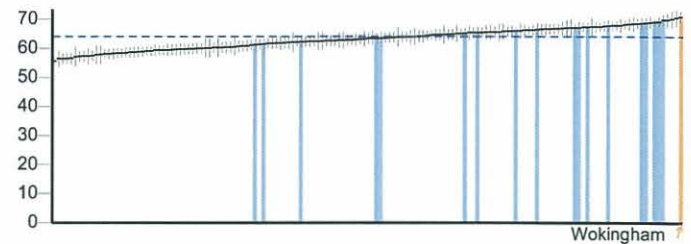
Summary Charts

Overarching indicators

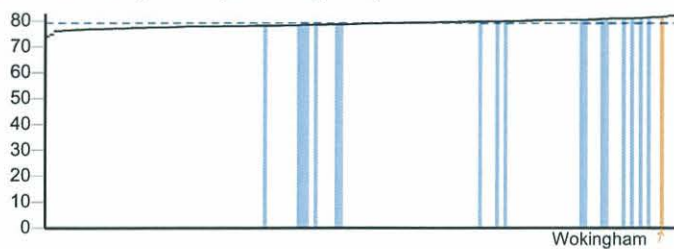
0.1i - Healthy life expectancy at birth (Male)



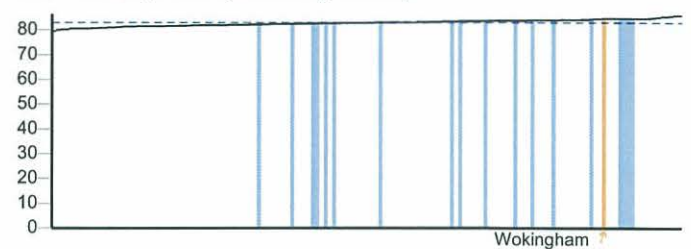
0.1i - Healthy life expectancy at birth (Female)



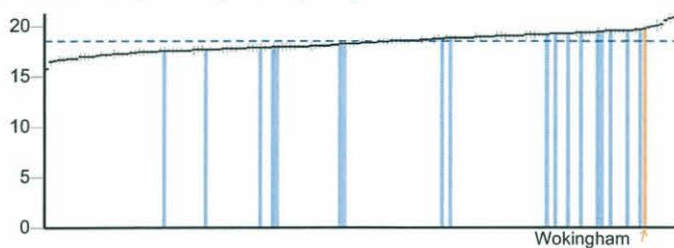
0.1ii - Life Expectancy at birth (Male)



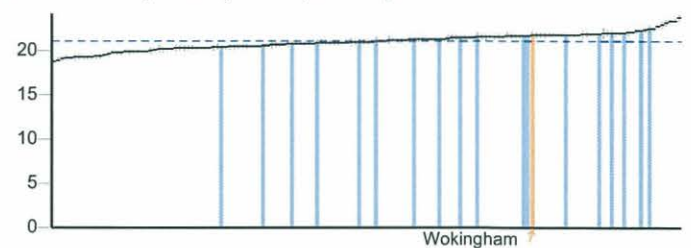
0.1ii - Life Expectancy at birth (Female)



0.1iii - Life Expectancy at 65 (Male)



0.1iii - Life Expectancy at 65 (Female)



0.2i - Slope index of inequality in life expectancy at birth based on national deprivation deciles within England (Male)

No data

0.2i - Slope index of inequality in life expectancy at birth based on national deprivation deciles within England (Female)

No data

0.2ii - Number of upper tier local authorities for which the local slope index of inequality in life expectancy (as defined in 0.2iii) has decreased (Male)

No data

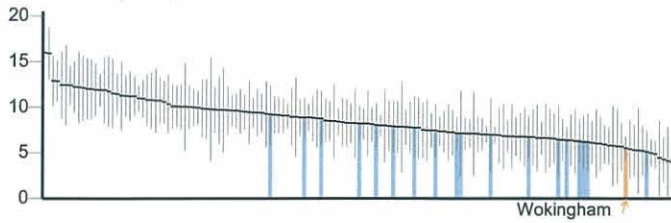
0.2ii - Number of upper tier local authorities for which the local slope index of inequality in life expectancy (as defined in 0.2iii) has decreased (Female)

No data

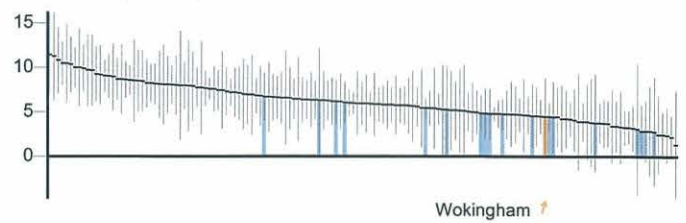
Key England value and confidence interval ↑ Wokingham Other local authority in South East

Overarching indicators continued

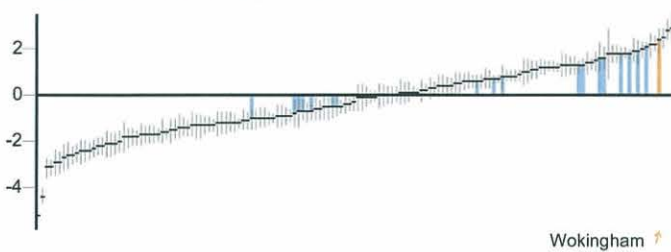
0.2iii - Slope index of inequality in life expectancy at birth within English local authorities, based on local deprivation deciles within each area (Male)



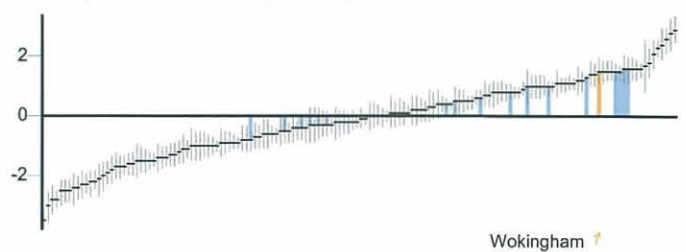
0.2iii - Slope index of inequality in life expectancy at birth within English local authorities, based on local deprivation deciles within each area (Female)



0.2iv - Gap in life expectancy at birth between each local authority and England as a whole (Male)



0.2iv - Gap in life expectancy at birth between each local authority and England as a whole (Female)



0.2v - Slope index of inequality in healthy life expectancy at birth based on national deprivation deciles within England (Male)

No data

0.2v - Slope index of inequality in healthy life expectancy at birth based on national deprivation deciles within England (Female)

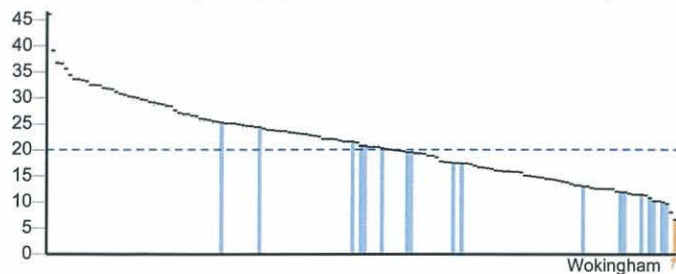
No data

Key England value and confidence interval Wokingham Other local authority in South East

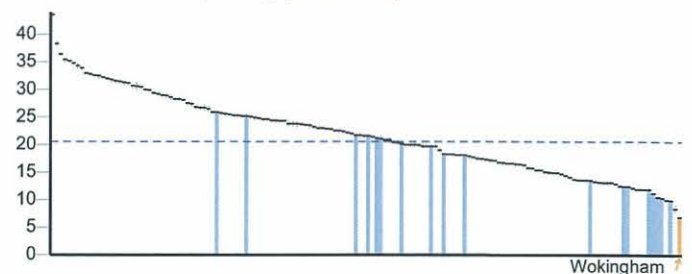
Wokingham

Wider determinants of health

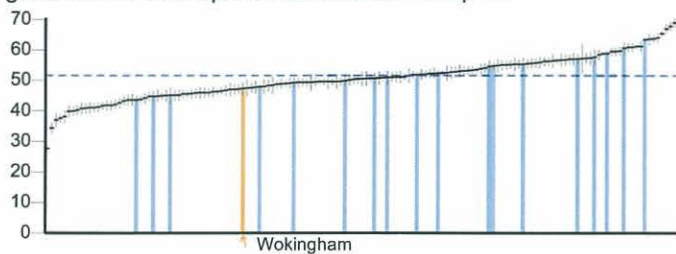
1.01i - Children in poverty (all dependent children under 20)



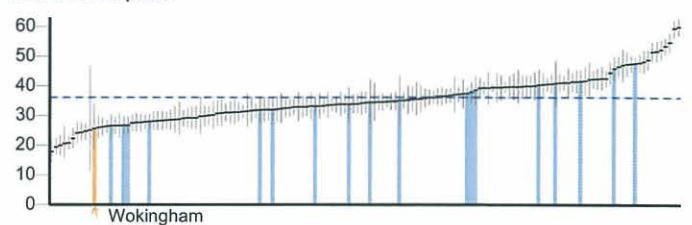
1.01ii - Children in poverty (under 16s)



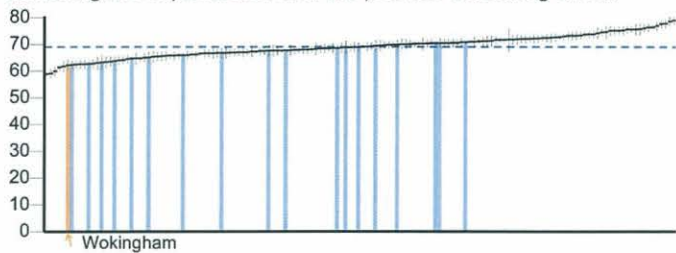
1.02i - School Readiness: The percentage of children achieving a good level of development at the end of reception



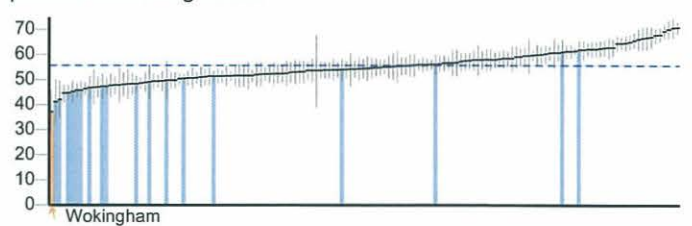
1.02i - School Readiness: The percentage of children with free school meal status achieving a good level of development at the end of reception



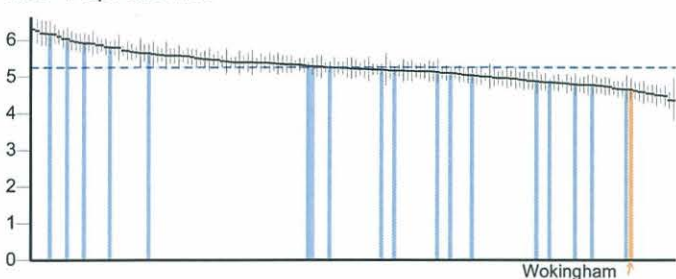
1.02ii - School Readiness: The percentage of Year 1 pupils achieving the expected level in the phonics screening check



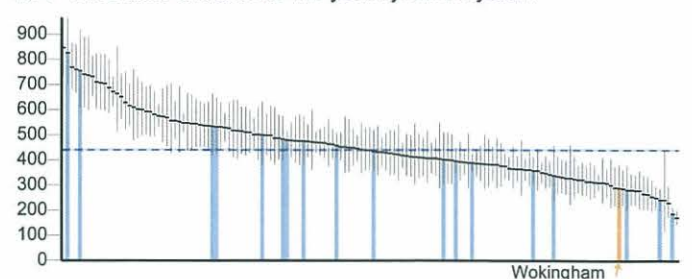
1.02ii - School Readiness: The percentage of Year 1 pupils with free school meal status achieving the expected level in the phonics screening check



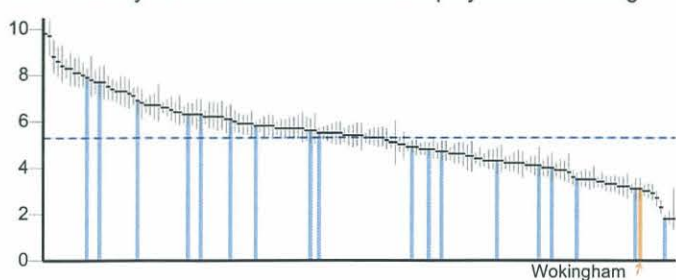
1.03 - Pupil absence



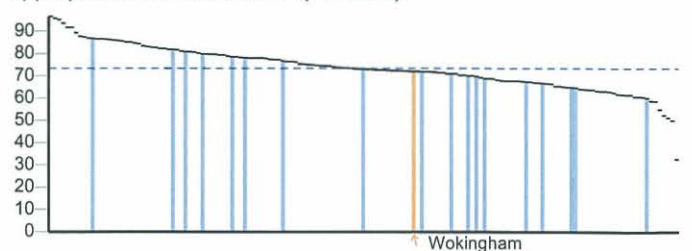
1.04 - First time entrants to the youth justice system



1.05 - 16-18 year olds not in education employment or training



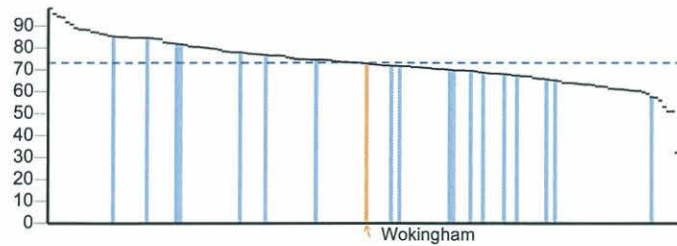
1.06i - Adults with a learning disability who live in stable and appropriate accommodation (Persons)



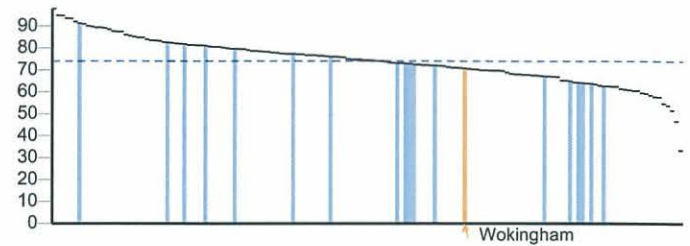
Key England value and confidence interval ↑ Wokingham Other local authority in South East

Wider determinants of health continued

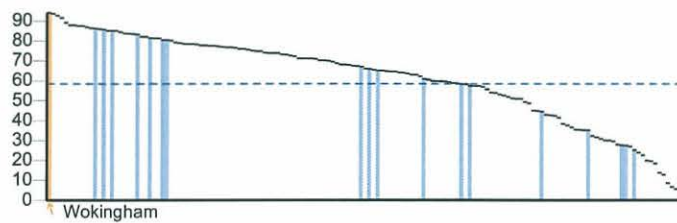
1.06i - Adults with a learning disability who live in stable and appropriate accommodation (Male)



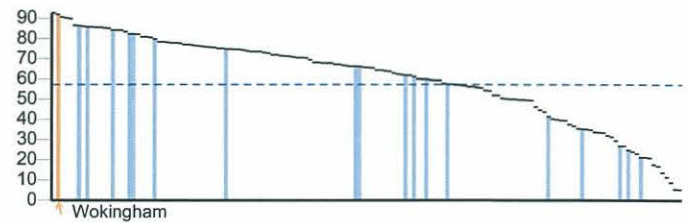
1.06i - Adults with a learning disability who live in stable and appropriate accommodation (Female)



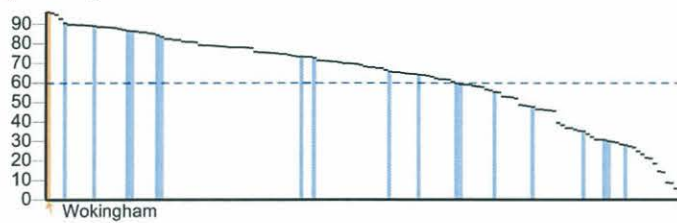
1.06ii - % of adults in contact with secondary mental health services who live in stable and appropriate accommodation (Persons)



1.06ii - % of adults in contact with secondary mental health services who live in stable and appropriate accommodation (Male)



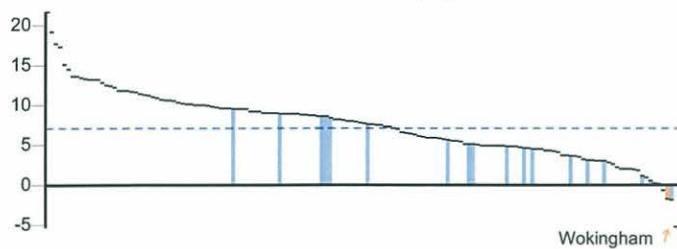
1.06ii - % of adults in contact with secondary mental health services who live in stable and appropriate accommodation (Female)



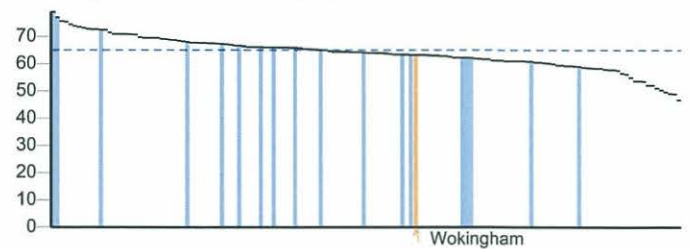
1.07 - People in prison who have a mental illness or a significant mental illness

No data

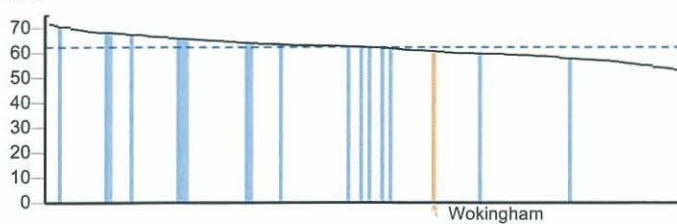
1.08i - Gap in the employment rate between those with a long-term health condition and the overall employment rate



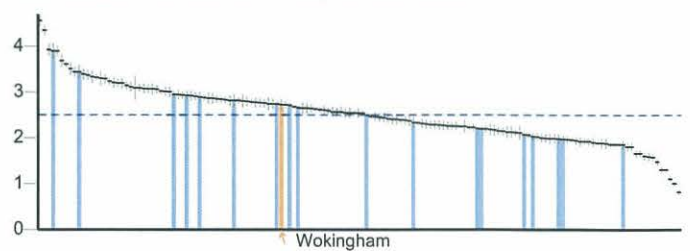
1.08ii - Gap in the employment rate between those with a learning disability and the overall employment rate



1.08iii - Gap in the employment rate for those in contact with secondary mental health services and the overall employment rate



1.09i - Sickness absence - The percentage of employees who had at least one day off in the previous week

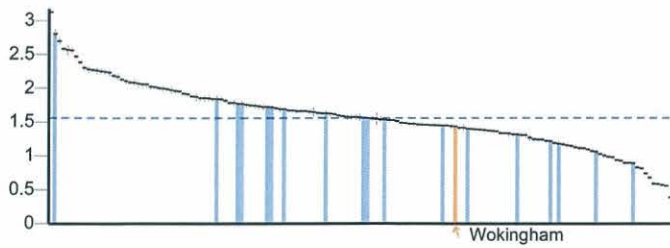


Key England value and confidence interval ↑ Wokingham Other local authority in South East

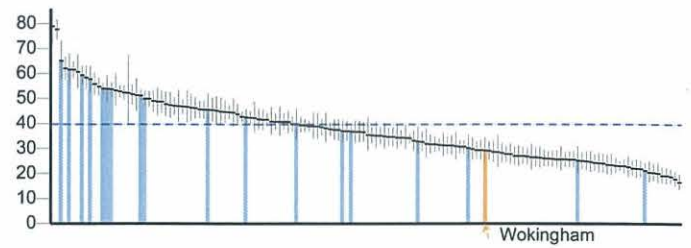
Wokingham

Wider determinants of health continued

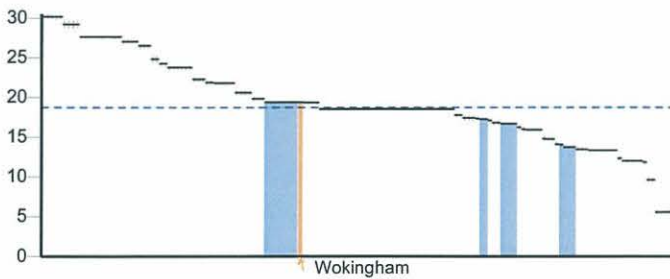
1.09ii - Sickness absence - The percent of working days lost due to sickness absence



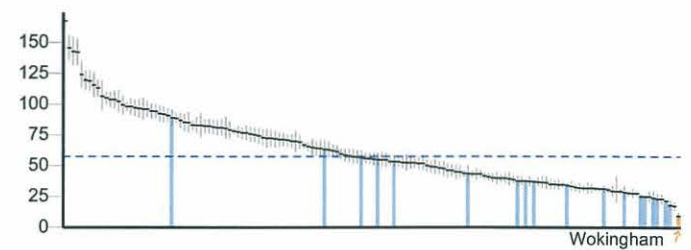
1.10 - Killed and seriously injured (KSI) casualties on England's roads



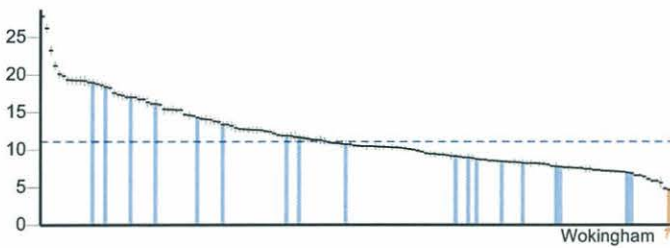
1.11 - Domestic Abuse



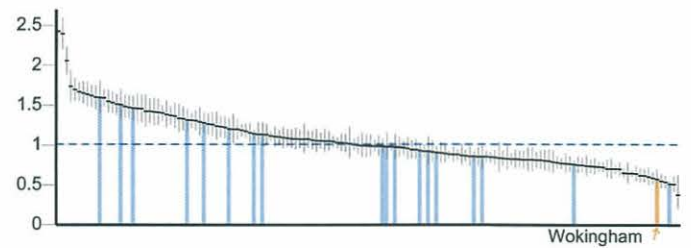
1.12i - Violent crime (including sexual violence) - hospital admissions for violence



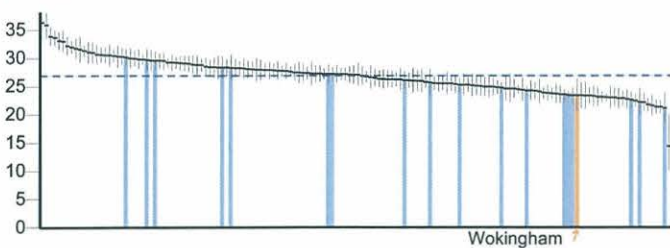
1.12ii - Violent crime (including sexual violence) - violence offences per 1,000 population



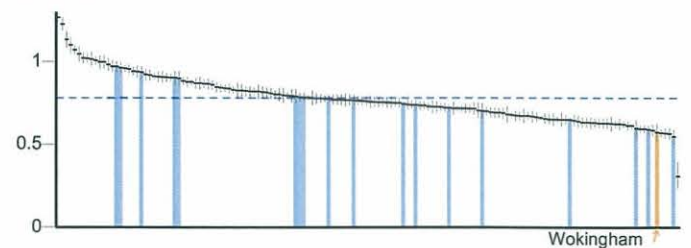
1.12iii - Violent crime (including sexual violence) - Rate of sexual offences per 1,000 population



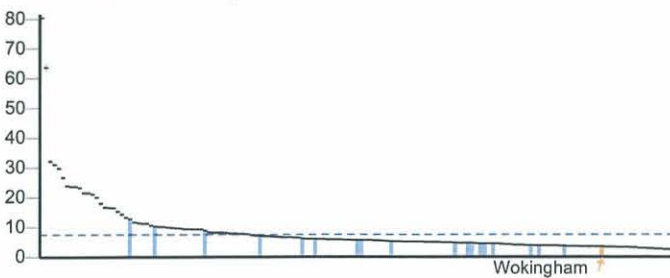
1.13i - Re-offending levels - percentage of offenders who re-offend



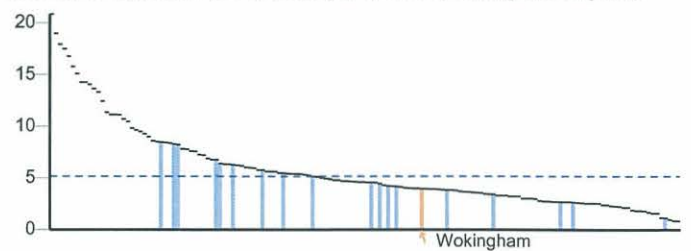
1.13ii - Re-offending levels - average number of re-offences per offender



1.14i - The rate of complaints about noise



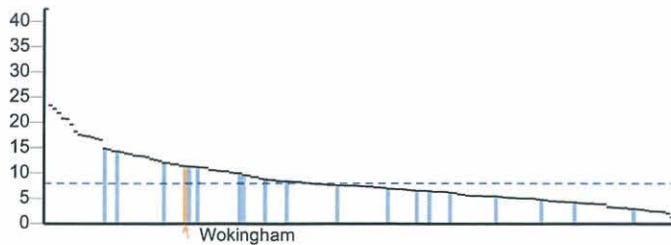
1.14ii - The percentage of the population exposed to road, rail and air transport noise of 65dB(A) or more, during the daytime



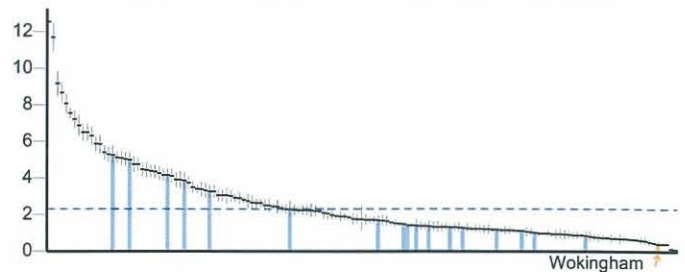
Key England value and confidence interval ↑ Wokingham Other local authority in South East

Wider determinants of health continued

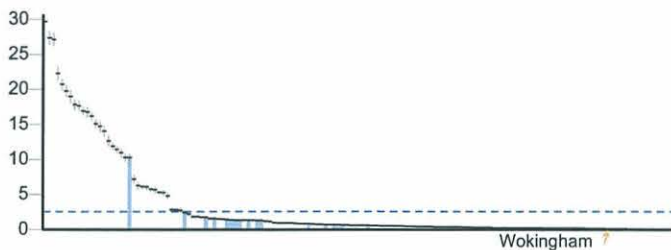
1.14iii - The percentage of the population exposed to road, rail and air transport noise of 55 dB(A) or more during the night-time



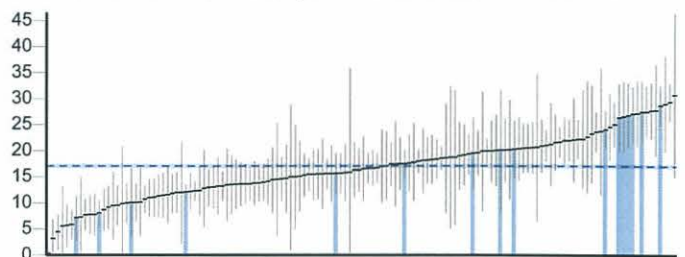
1.15i - Statutory homelessness - homelessness acceptances



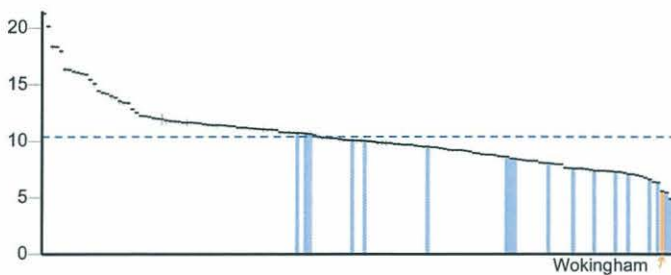
1.15ii - Statutory homelessness - households in temporary accommodation



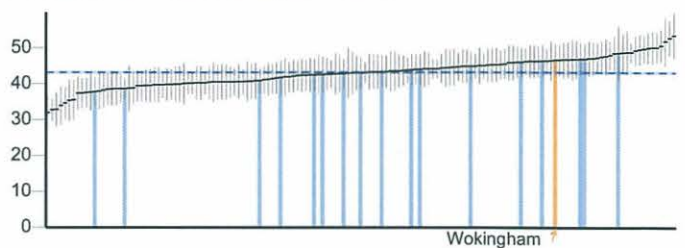
1.16 - Utilisation of outdoor space for exercise/health reasons



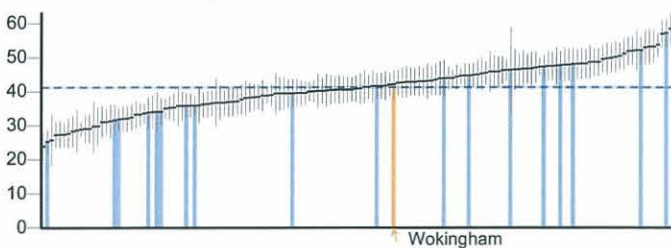
1.17 - Fuel Poverty



1.18i - Social Isolation: % of adult social care users who have as much social contact as they would like



1.18ii - Social Isolation: % of adult carers who have as much social contact as they would like



1.19i - Older people's perception of community safety - safe in local area during the day

No data

1.19ii - Older people's perception of community safety - safe in local area after dark

No data

1.19iii - Older people's perception of community safety - safe in own home at night

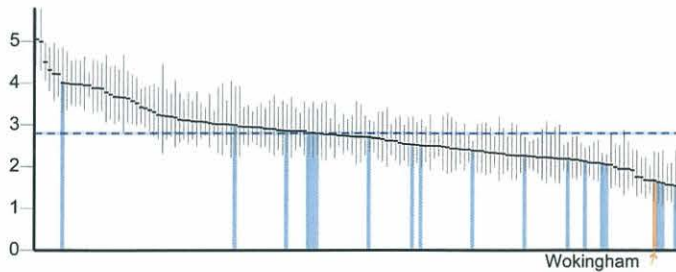
No data

Key England value and confidence interval Wokingham Other local authority in South East

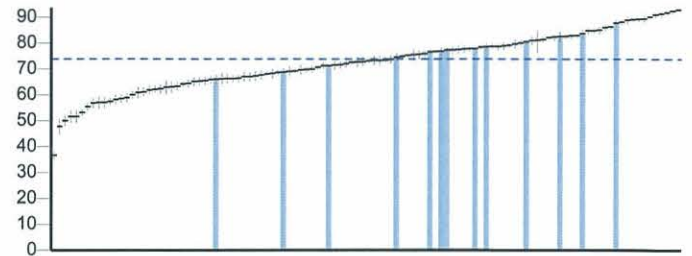
Wokingham

Health improvement

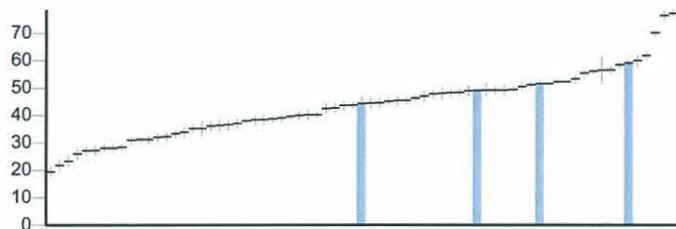
2.01 - Low birth weight of term babies



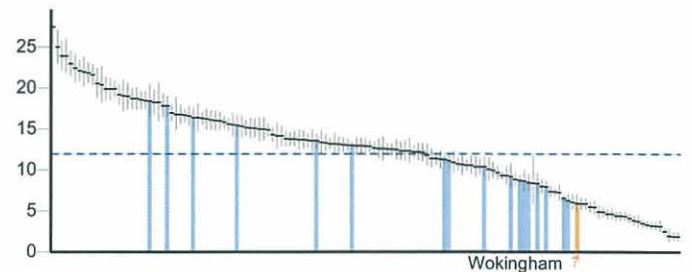
2.02i - Breastfeeding - Breastfeeding initiation



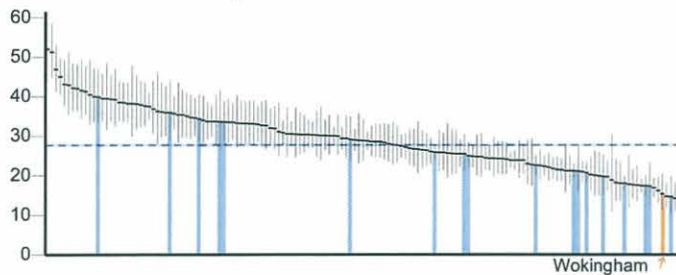
2.02ii - Breastfeeding - Breastfeeding prevalence at 6-8 weeks after birth



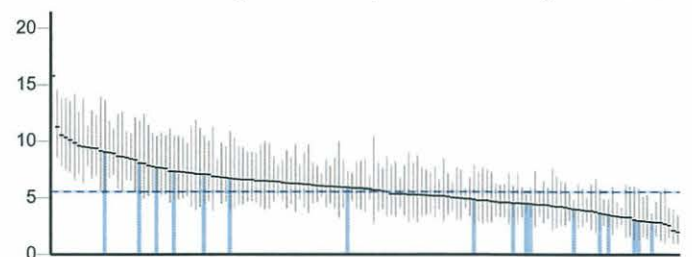
2.03 - Smoking status at time of delivery



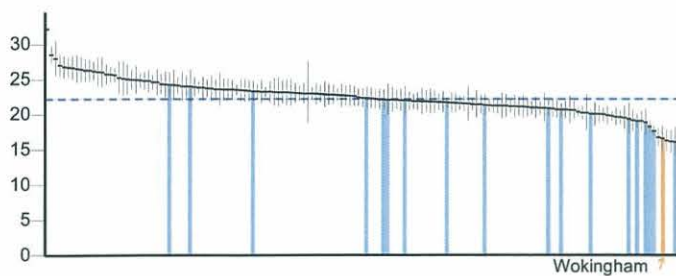
2.04 - Under 18 conceptions



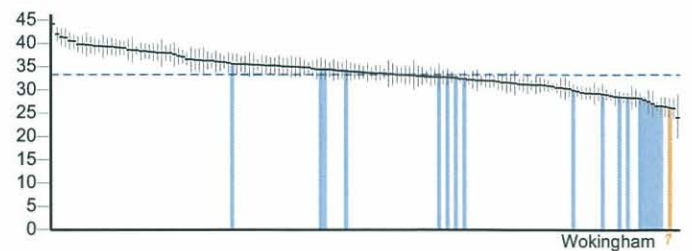
2.04 - Under 18 conceptions: conceptions in those aged under 16



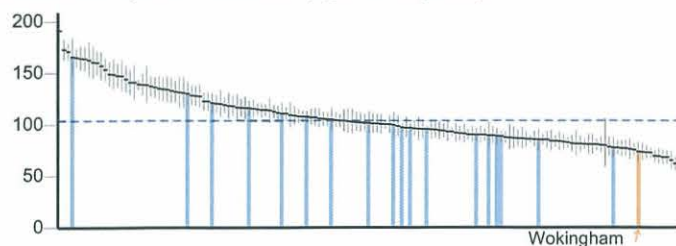
2.06i - Excess weight in 4-5 and 10-11 year olds - 4-5 year olds



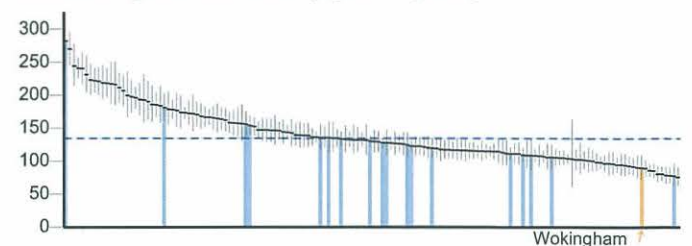
2.06ii - Excess weight in 4-5 and 10-11 year olds - 10-11 year olds



2.07i - Hospital admissions caused by unintentional and deliberate injuries in children (aged 0-14 years)



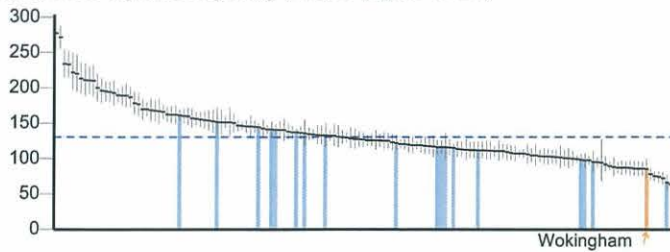
2.07i - Hospital admissions caused by unintentional and deliberate injuries in children (aged 0-4 years)



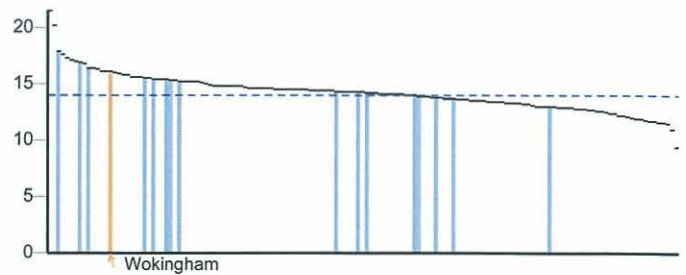
Key England value and confidence interval ↑ Wokingham Other local authority in South East

Health improvement continued

2.07ii - Hospital admissions caused by unintentional and deliberate injuries in young people (aged 15-24)



2.08 - Emotional well-being of looked after children



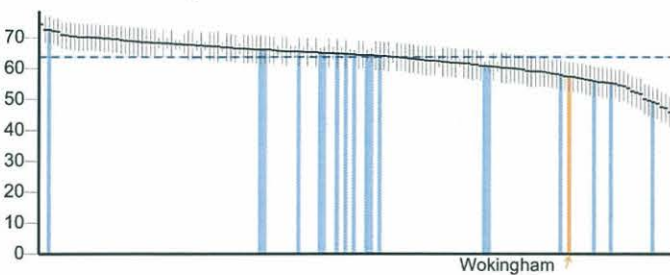
2.09ii - Smoking prevalence age 15 years - regular smokers

No data

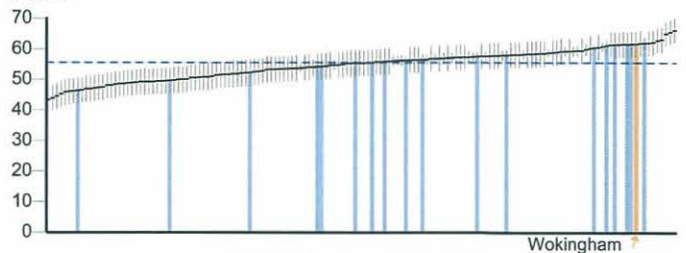
2.09iii - Smoking prevalence age 15 years - occasional smokers

No data

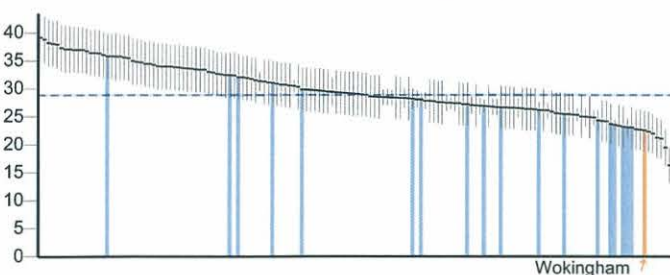
2.12 - Excess Weight in Adults



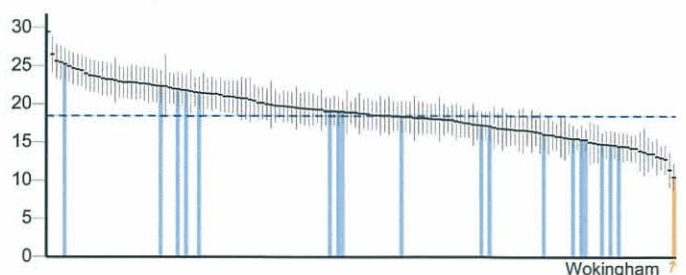
2.13i - Percentage of physically active and inactive adults - active adults



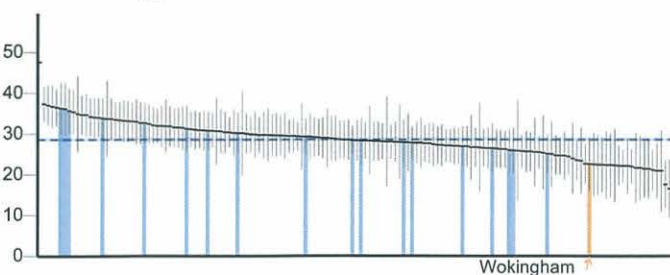
2.13ii - Percentage of active and inactive adults - inactive adults



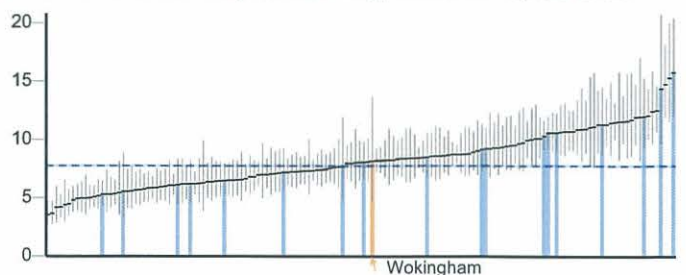
2.14 - Smoking Prevalence



2.14 - Smoking prevalence - routine & manual



2.15i - Successful completion of drug treatment - opiate users

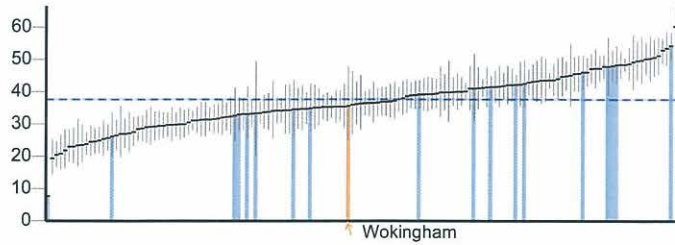


Key England value and confidence interval ↑ Wokingham Other local authority in South East

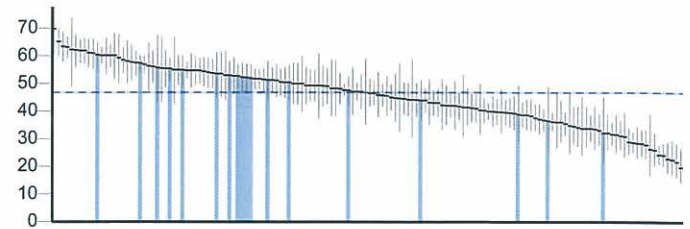
Wokingham

Health improvement continued

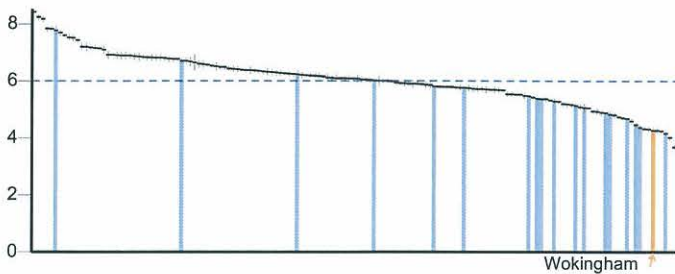
2.15ii - Successful completion of drug treatment - non-opiate users



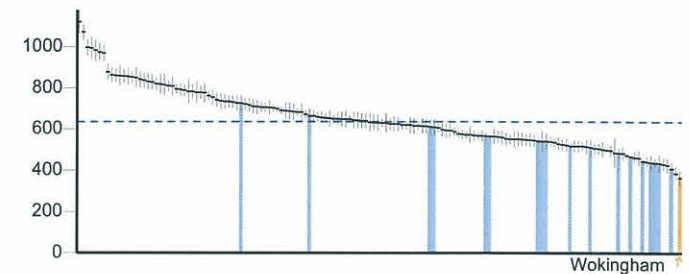
2.16 - People entering prison with substance dependence issues who are previously not known to community treatment



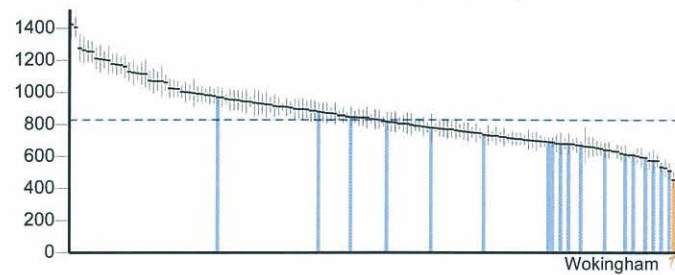
2.17 - Recorded diabetes



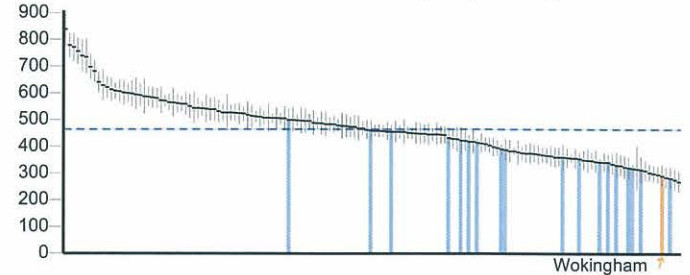
2.18 - Alcohol related admissions to hospital (Persons)



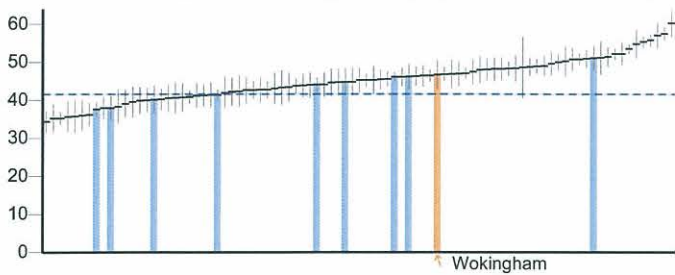
2.18 - Alcohol related admissions to hospital (Male)



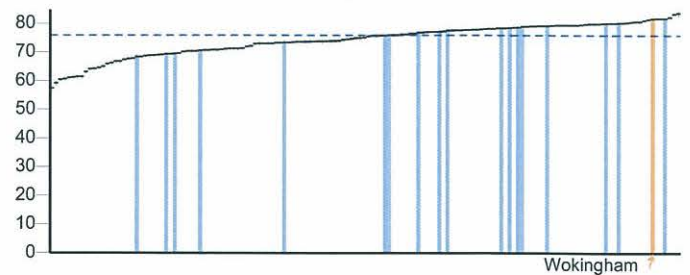
2.18 - Alcohol related admissions to hospital (Female)



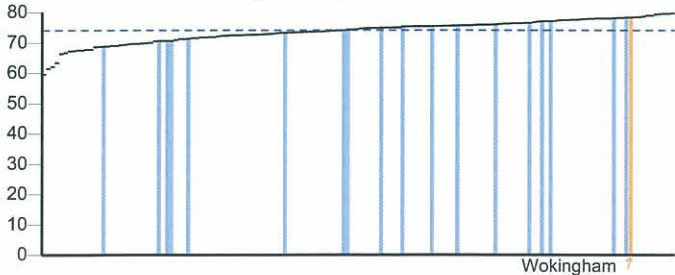
2.19 - Cancer diagnosed at early stage (Experimental Statistics)



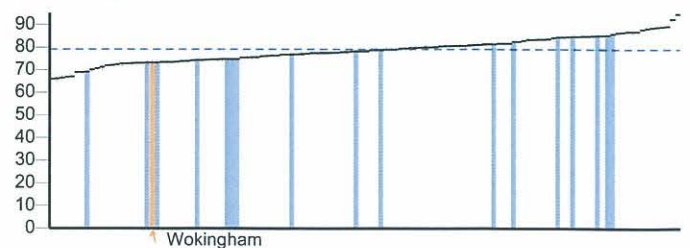
2.20i - Cancer screening coverage - breast cancer



2.20ii - Cancer screening coverage - cervical cancer



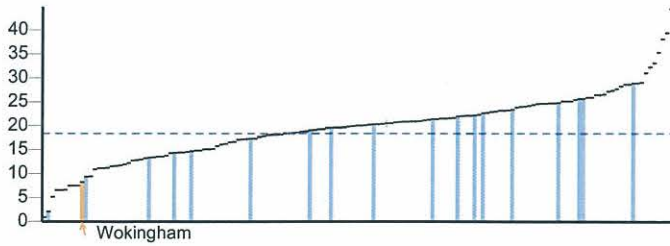
2.21vii - Access to non-cancer screening programmes - diabetic retinopathy



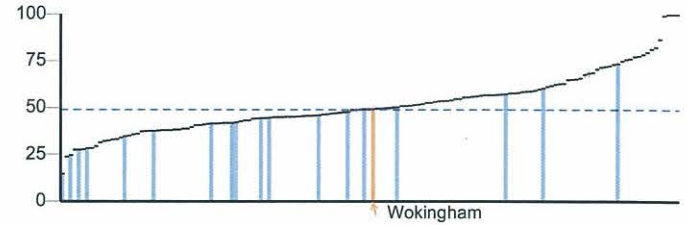
Key England value and confidence interval ↑ Wokingham Other local authority in South East

Health improvement continued

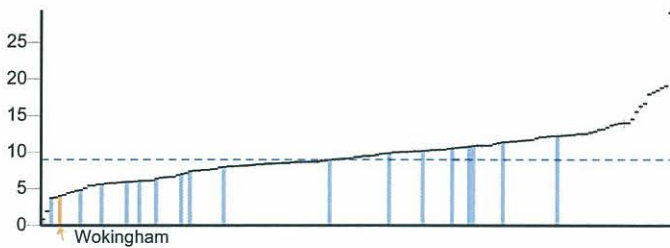
2.22iii - Cumulative % of the eligible population aged 40-74 offered an NHS Health Check



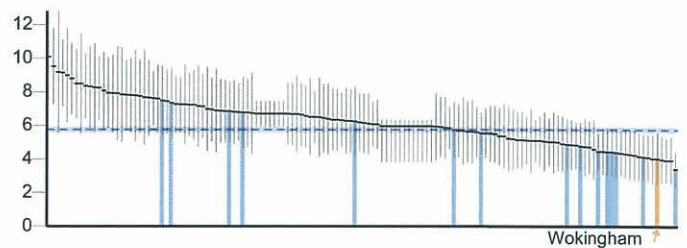
2.22iv - Cumulative % of the eligible population aged 40-74 offered an NHS Health Check who received an NHS Health Check



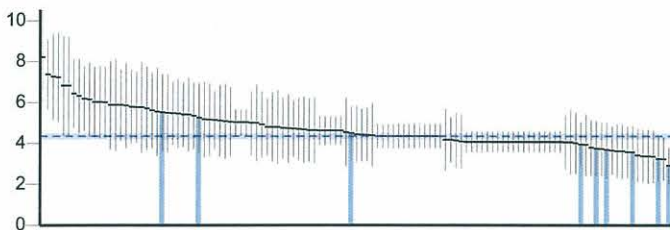
2.22v - Cumulative % of the eligible population aged 40-74 who received an NHS Health check



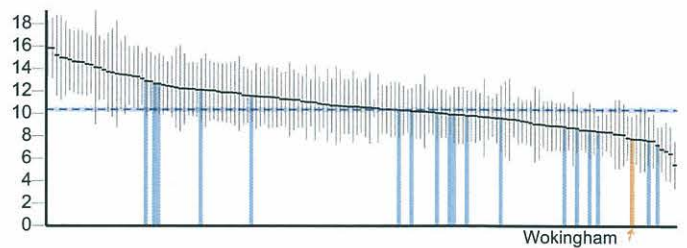
2.23i - Self-reported well-being - people with a low satisfaction score



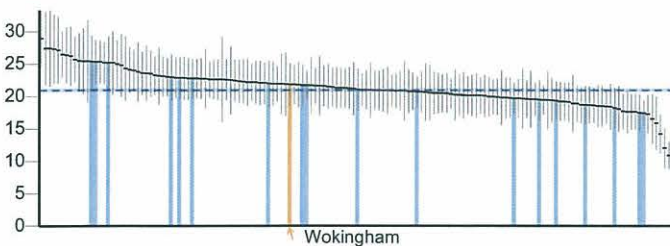
2.23ii - Self-reported well-being - people with a low worthwhile score



2.23iii - Self-reported well-being - people with a low happiness score



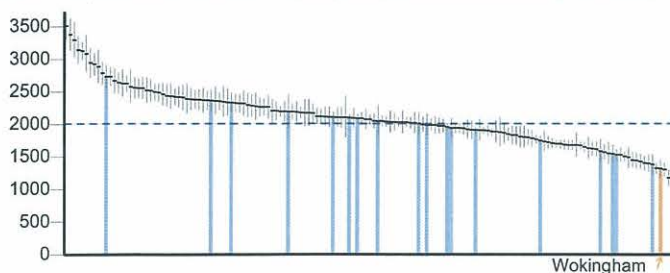
2.23iv - Self-reported well-being - people with a high anxiety score



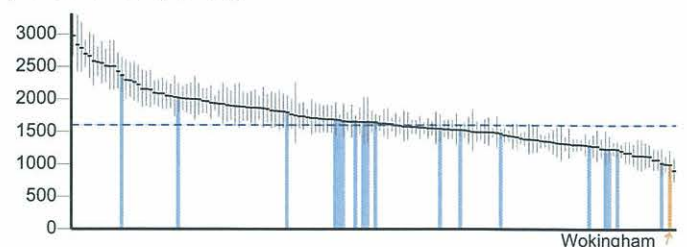
2.23v - Average Warwick-Edinburgh Mental Well-Being Scale (WEMWBS) score

No data

2.24i - Injuries due to falls in people aged 65 and over (Persons)



2.24i - Injuries due to falls in people aged 65 and over (males/females) (Male)

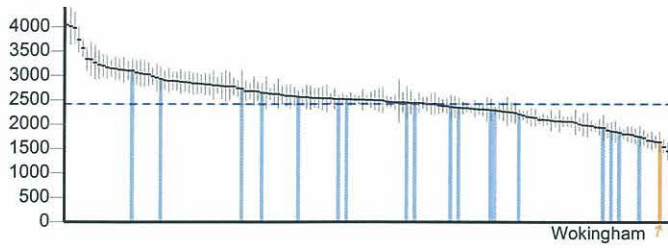


Key England value and confidence interval ↑ Wokingham Other local authority in South East

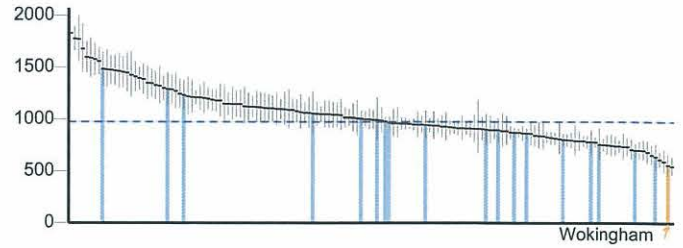
Wokingham

Health improvement continued

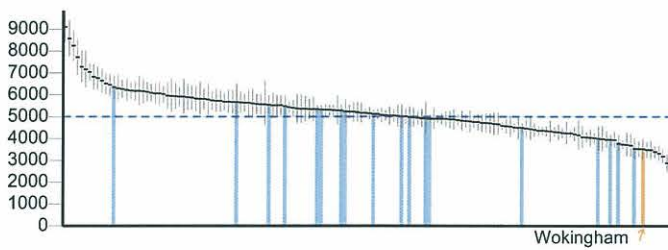
2.24i - Injuries due to falls in people aged 65 and over (males/females) (Female)



2.24ii - Injuries due to falls in people aged 65 and over - aged 65-79



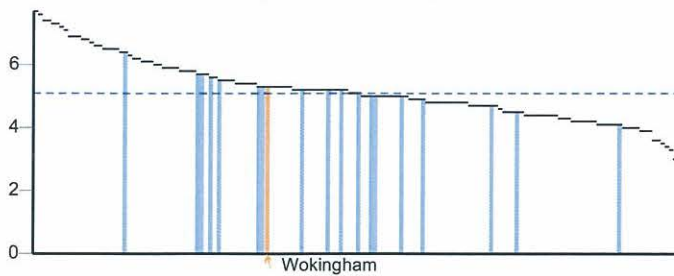
2.24iii - Injuries due to falls in people aged 65 and over - aged 80+



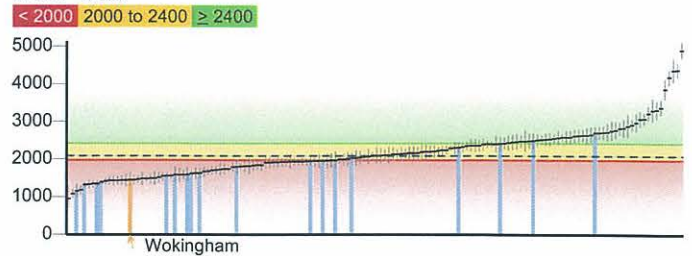
Key  England value and confidence interval  Wokingham  Other local authority in South East

Health protection

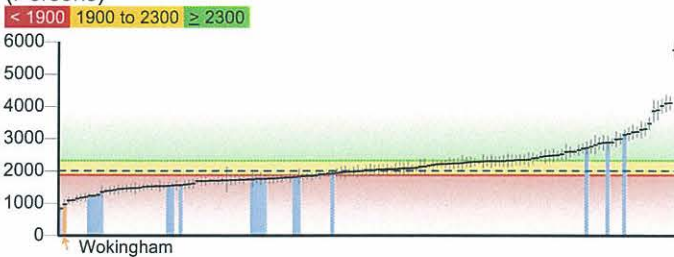
3.01 - Fraction of mortality attributable to particulate air pollution



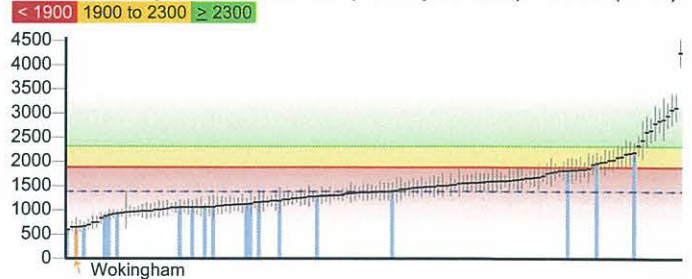
3.02i - Chlamydia screening detection rate (15-24 year olds) - Old NCSP data



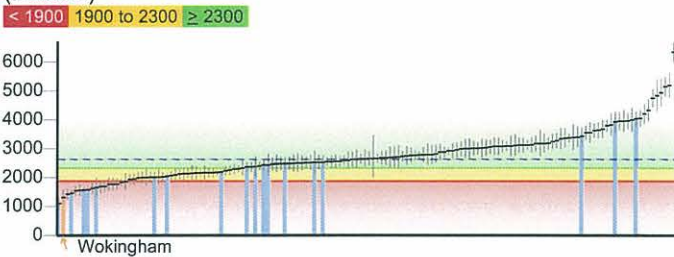
3.02ii - Chlamydia detection rate (15-24 year olds) - CTAD (Persons)



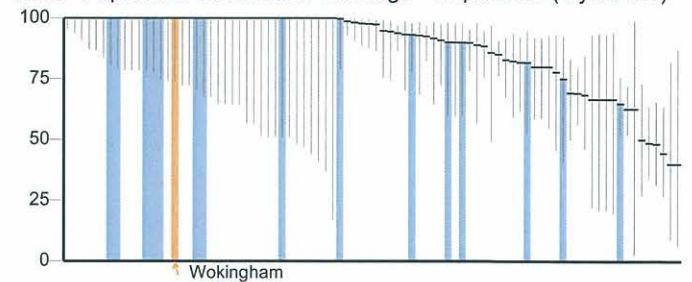
3.02ii - Chlamydia detection rate (15-24 year olds) - CTAD (Male)



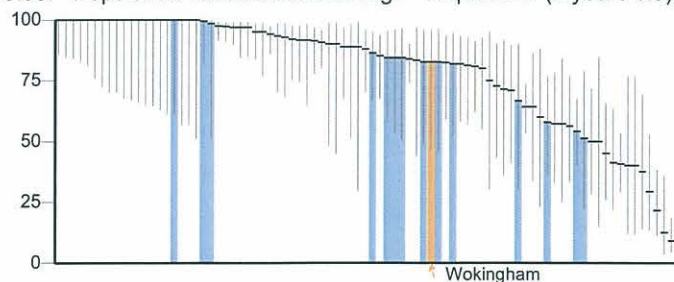
3.02ii - Chlamydia detection rate (15-24 year olds) - CTAD (Female)



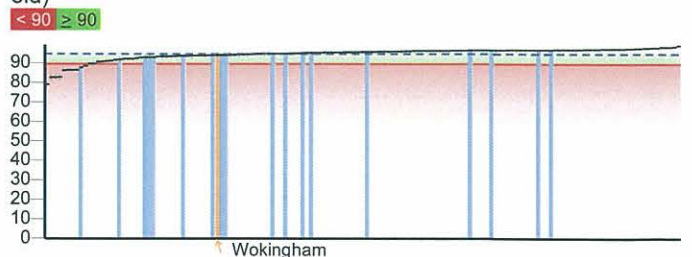
3.03i - Population vaccination coverage - Hepatitis B (1 year old)



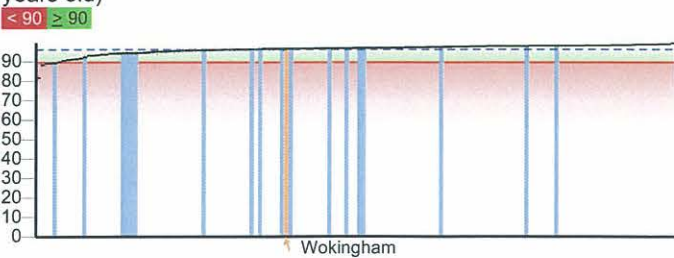
3.03i - Population vaccination coverage - Hepatitis B (2 years old)



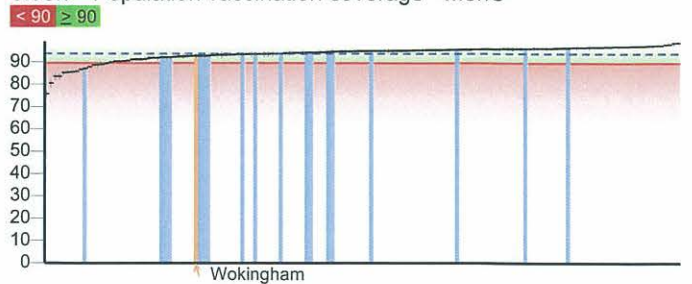
3.03iii - Population vaccination coverage - Dtap / IPV / Hib (1 year old)



3.03iii - Population vaccination coverage - Dtap / IPV / Hib (2 years old)



3.03iv - Population vaccination coverage - MenC



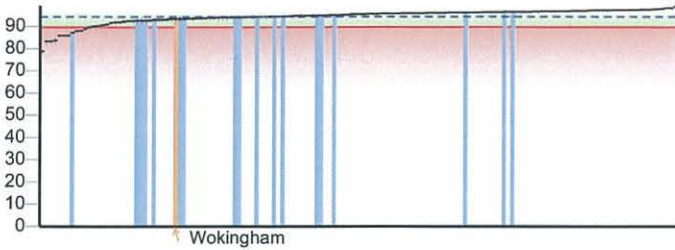
Key England value and confidence interval Wokingham Other local authority in South East

Wokingham

Health protection continued

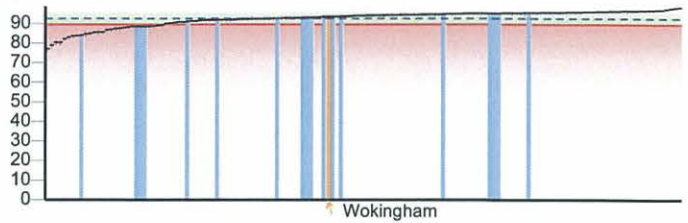
3.03v - Population vaccination coverage - PCV

< 90 ≥ 90



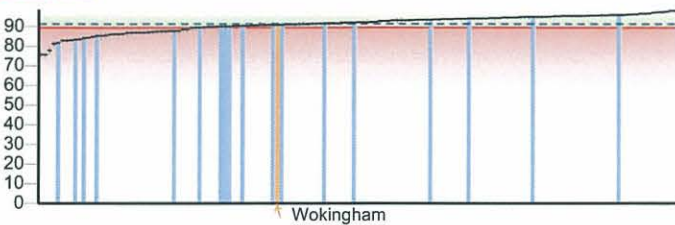
3.03vi - Population vaccination coverage - Hib / MenC booster (2 years old)

< 90 ≥ 90



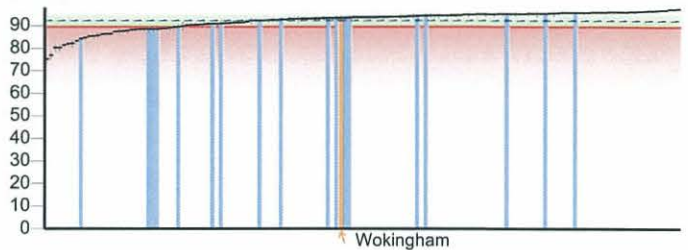
3.03vi - Population vaccination coverage - Hib / Men C booster (5 years)

< 90 ≥ 90



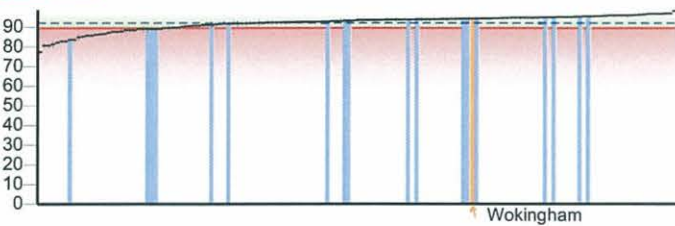
3.03vii - Population vaccination coverage - PCV booster

< 90 ≥ 90



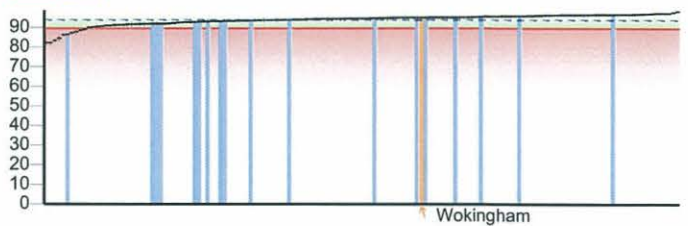
3.03viii - Population vaccination coverage - MMR for one dose (2 years old)

< 90 ≥ 90



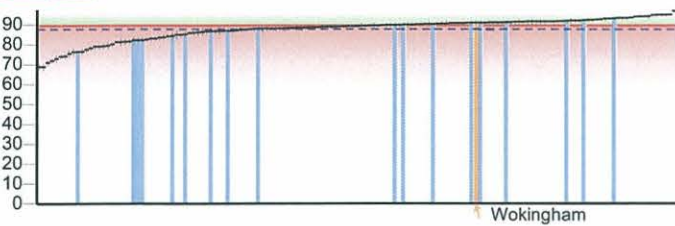
3.03ix - Population vaccination coverage - MMR for one dose (5 years old)

< 90 ≥ 90



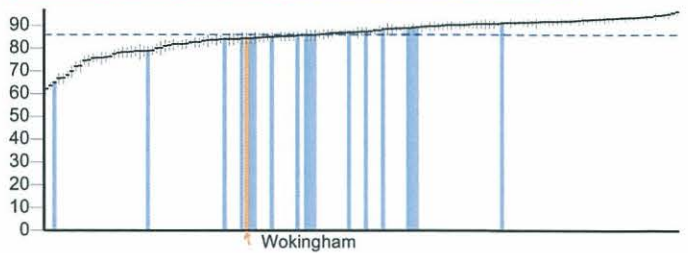
3.03x - Population vaccination coverage - MMR for two doses (5 years old)

< 90 ≥ 90



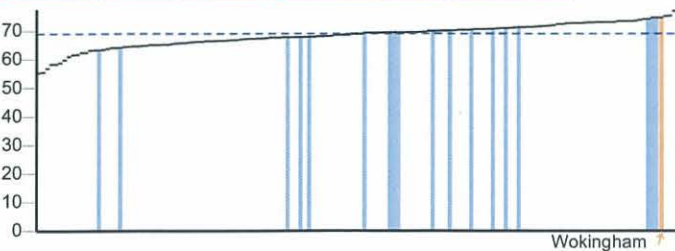
3.03xii - Population vaccination coverage - HPV

< previous years England average ≥ previous years England average



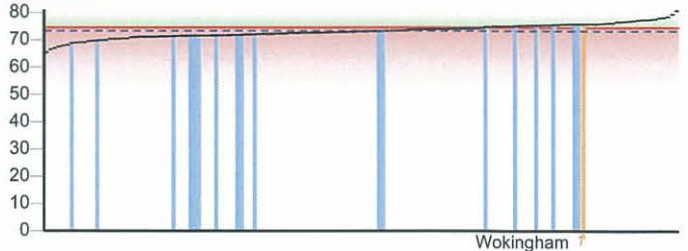
3.03xiii - Population vaccination coverage - PPV

< previous years England average ≥ previous years England average



3.03xiv - Population vaccination coverage - Flu (aged 65+)

< 75 ≥ 75

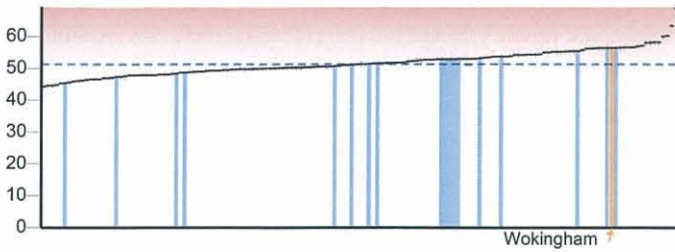


Key --- England value and confidence interval ↑ Wokingham ■ Other local authority in South East

Health protection continued

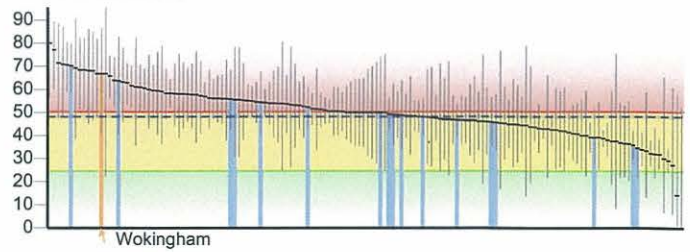
3.03xv - Population vaccination coverage - Flu (at risk individuals)

< 75 ≥ 75



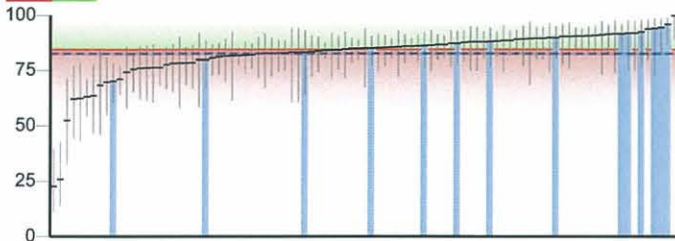
3.04 - People presenting with HIV at a late stage of infection

< 25 25 to 50 ≥ 50

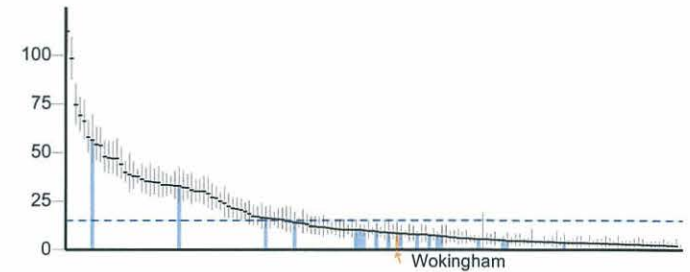


3.05i - Treatment completion for TB

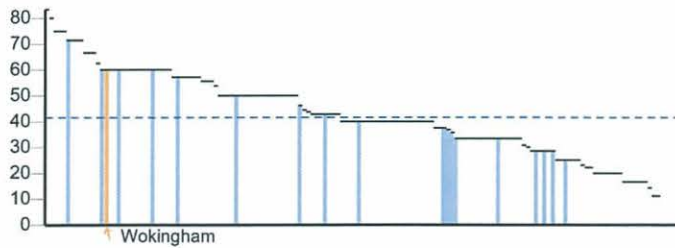
< 85 ≥ 85



3.05ii - Incidence of TB



3.06 - NHS organisations with a board approved sustainable development management plan

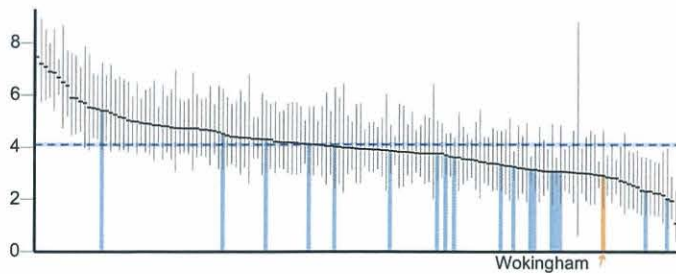


Key England value and confidence interval Wokingham Other local authority in South East

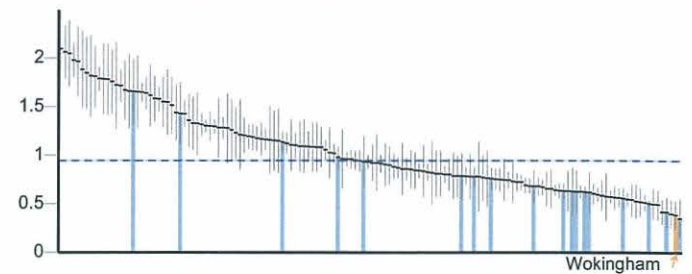
Wokingham

Healthcare and premature mortality

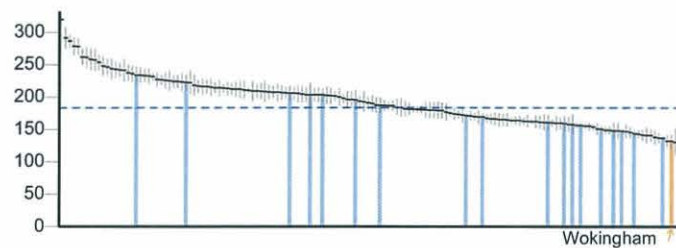
4.01 - Infant mortality



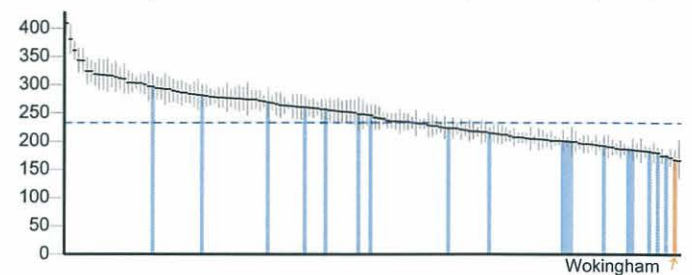
4.02 - Tooth decay in children aged 5



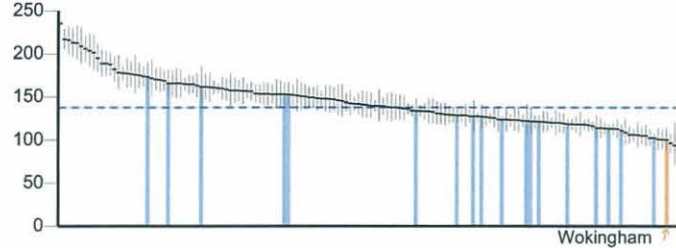
4.03 - Mortality rate from causes considered preventable (Persons)



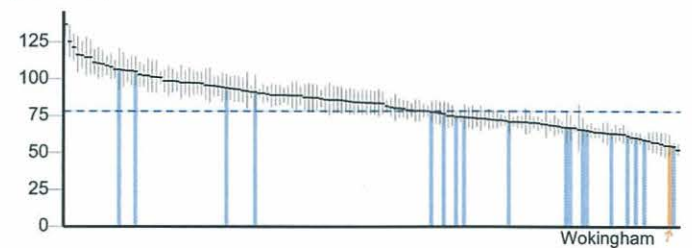
4.03 - Mortality rate from causes considered preventable (Male)



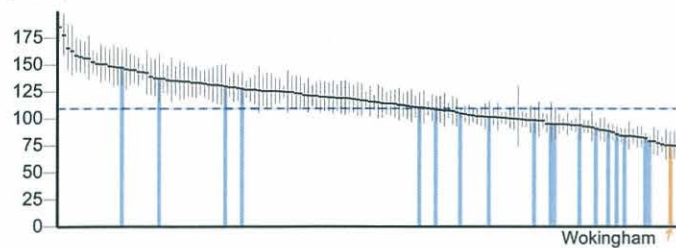
4.03 - Mortality rate from causes considered preventable (Female)



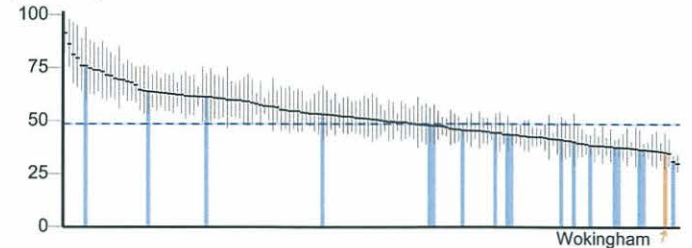
4.04i - Under 75 mortality rate from all cardiovascular diseases (Persons)



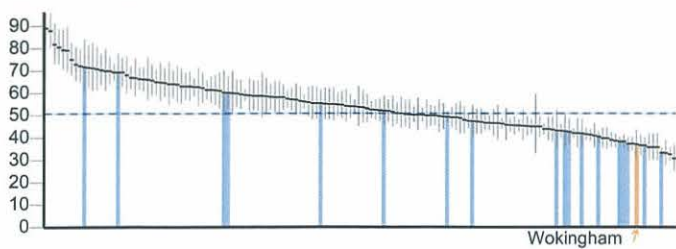
4.04i - Under 75 mortality rate from all cardiovascular diseases (Male)



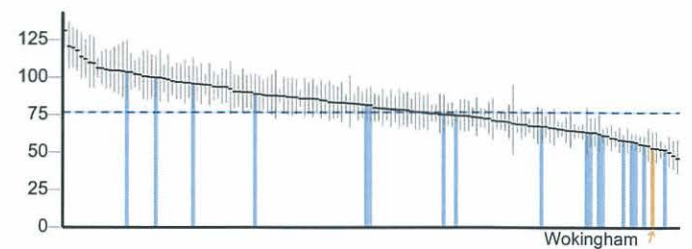
4.04i - Under 75 mortality rate from all cardiovascular diseases (Female)



4.04ii - Under 75 mortality rate from cardiovascular diseases considered preventable (Persons)



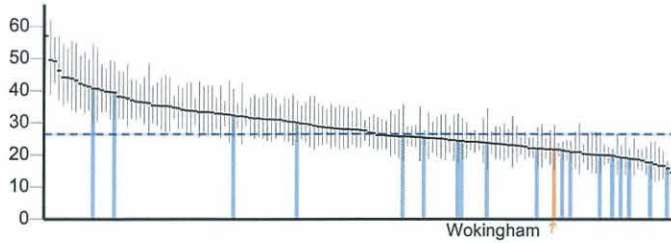
4.04ii - Under 75 mortality rate from cardiovascular diseases considered preventable (Male)



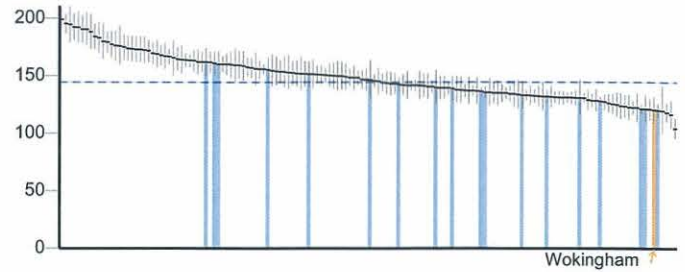
Key England value and confidence interval ↑ Wokingham Other local authority in South East

Healthcare and premature mortality continued

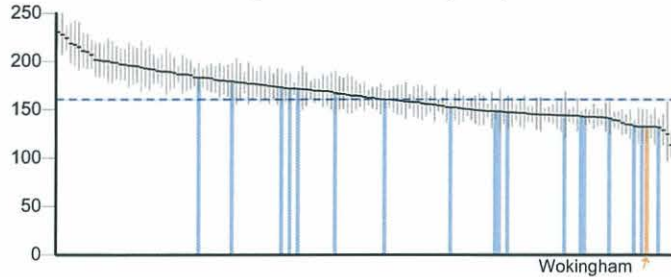
4.04ii - Under 75 mortality rate from cardiovascular diseases considered preventable (Female)



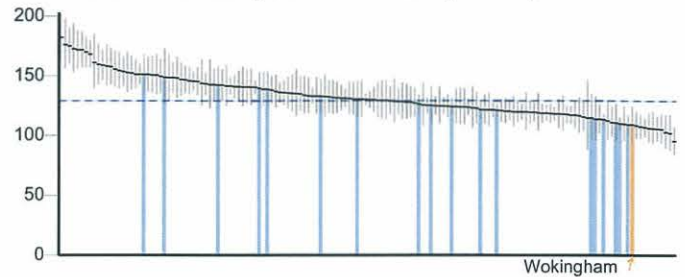
4.05i - Under 75 mortality rate from cancer (Persons)



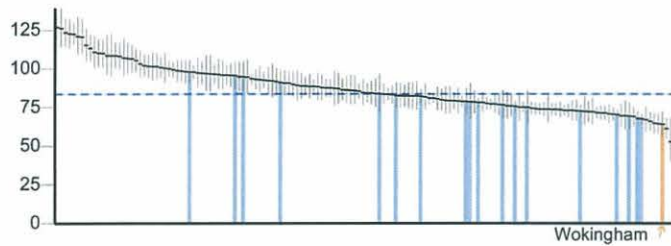
4.05i - Under 75 mortality rate from cancer (Male)



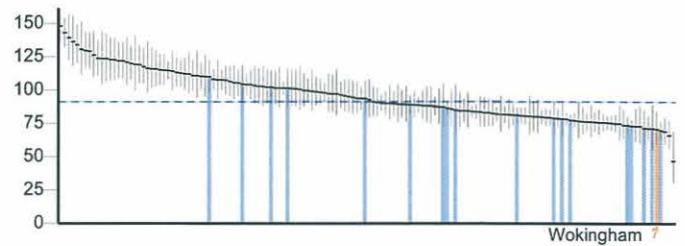
4.05i - Under 75 mortality rate from cancer (Female)



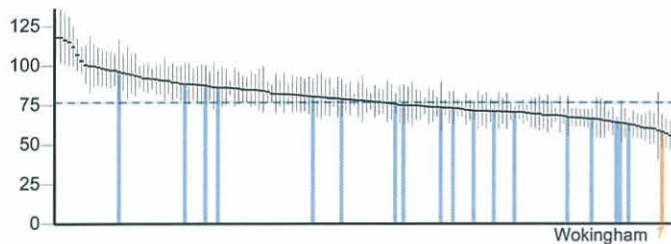
4.05ii - Under 75 mortality rate from cancer considered preventable (Persons)



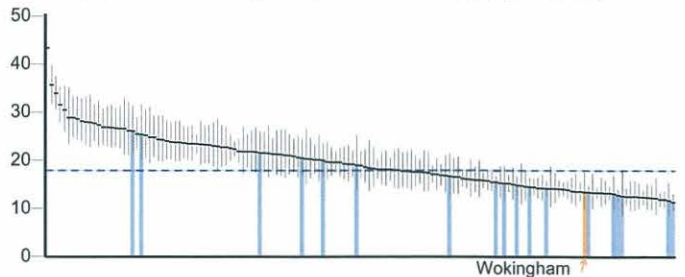
4.05ii - Under 75 mortality rate from cancer considered preventable (Male)



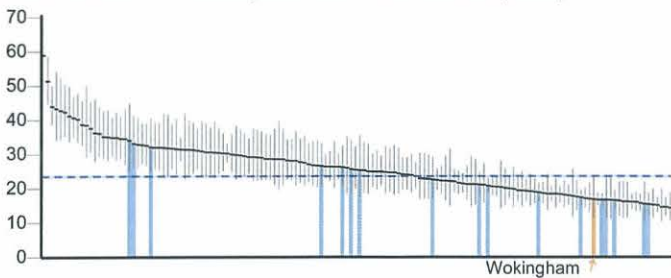
4.05ii - Under 75 mortality rate from cancer considered preventable (Female)



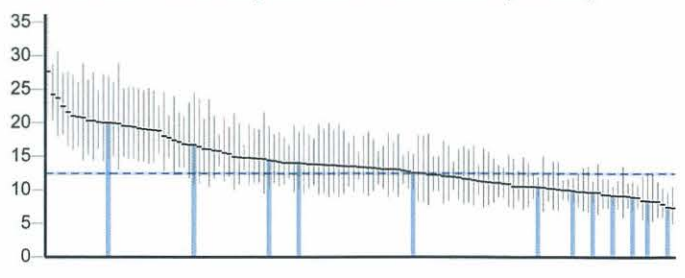
4.06i - Under 75 mortality rate from liver disease (Persons)



4.06i - Under 75 mortality rate from liver disease (Male)



4.06i - Under 75 mortality rate from liver disease (Female)

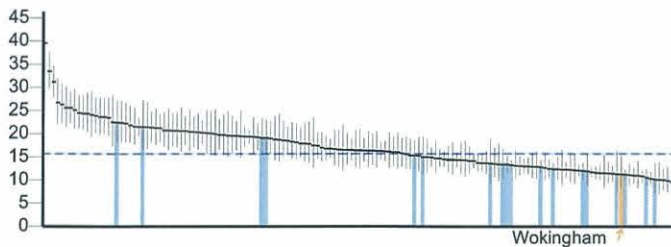


Key England value and confidence interval ↑ Wokingham Other local authority in South East

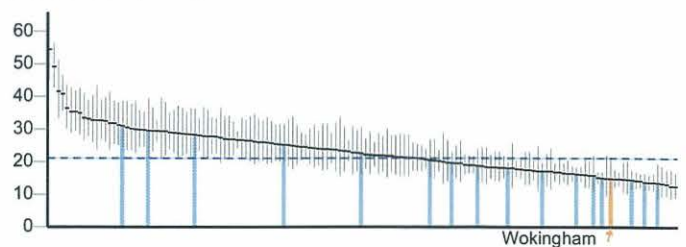
Wokingham

Healthcare and premature mortality continued

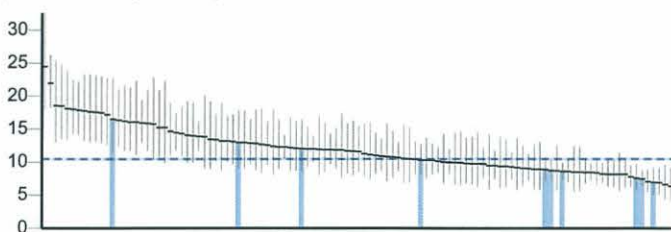
4.06ii - Under 75 mortality rate from liver disease considered preventable (Persons)



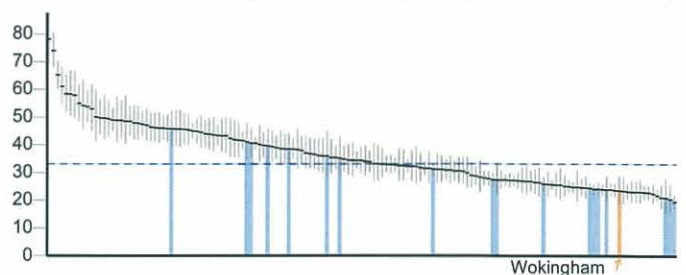
4.06ii - Under 75 mortality rate from liver disease considered preventable (Male)



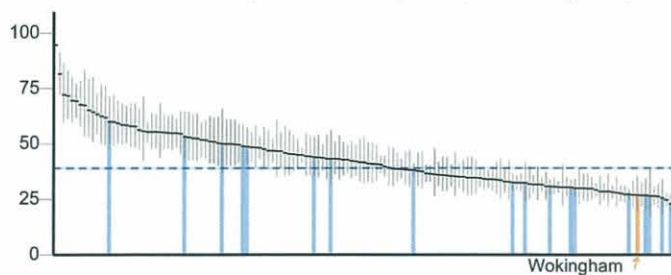
4.06ii - Under 75 mortality rate from liver disease considered preventable (Female)



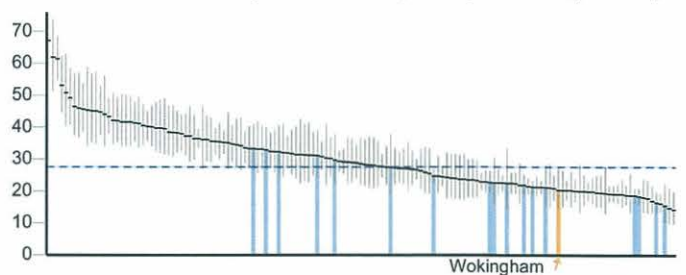
4.07i - Under 75 mortality rate from respiratory disease (Persons)



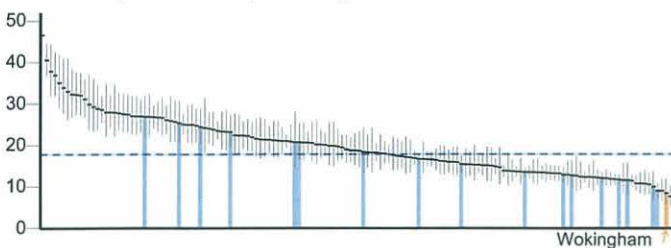
4.07i - Under 75 mortality rate from respiratory disease (Male)



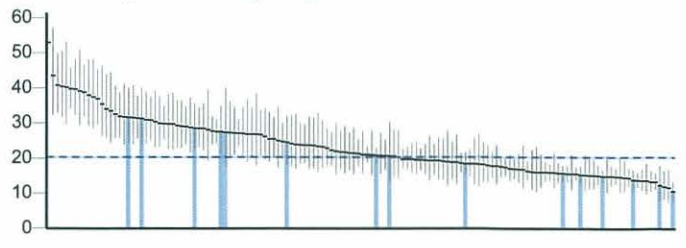
4.07i - Under 75 mortality rate from respiratory disease (Female)



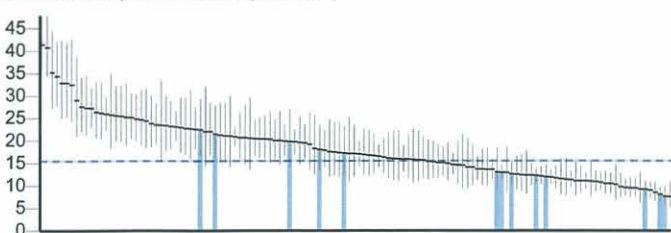
4.07ii - Under 75 mortality rate from respiratory disease considered preventable (Persons)



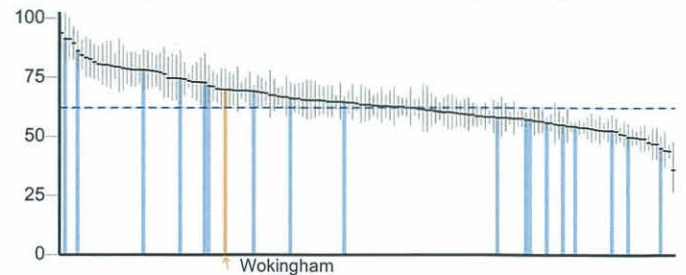
4.07ii - Under 75 mortality rate from respiratory disease considered preventable (Male)



4.07ii - Under 75 mortality rate from respiratory disease considered preventable (Female)



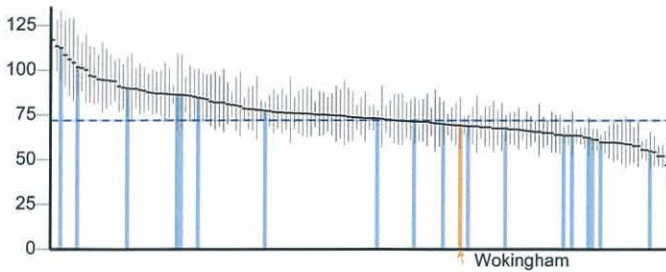
4.08 - Mortality from communicable diseases (Persons)



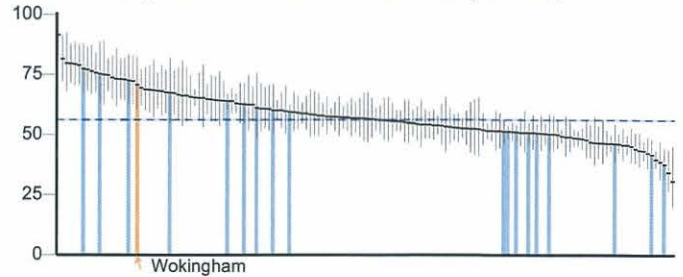
Key England value and confidence interval ↑ Wokingham Other local authority in South East

Healthcare and premature mortality continued

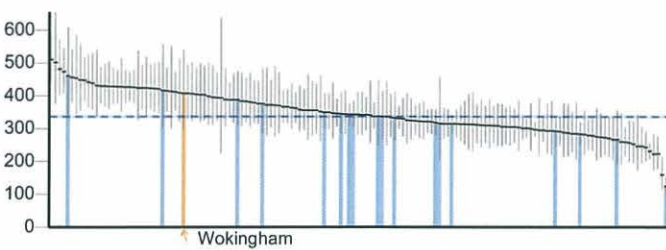
4.08 - Mortality from communicable diseases (Male)



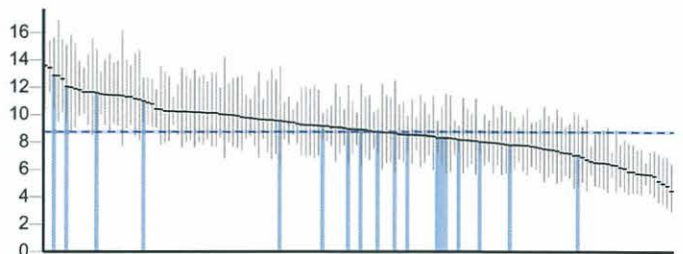
4.08 - Mortality from communicable diseases (Female)



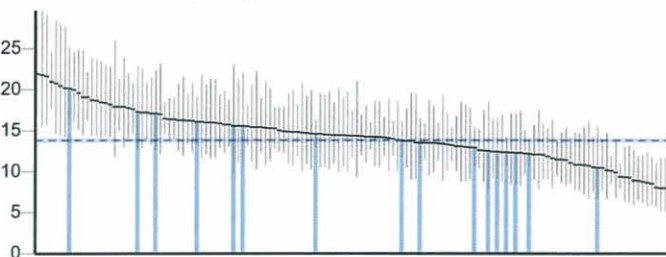
4.09 - Excess under 75 mortality rate in adults with serious mental illness



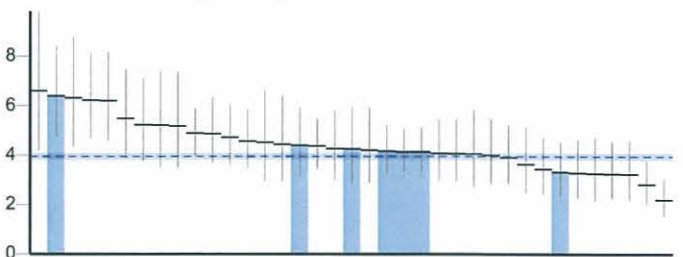
4.10 - Suicide rate (Persons)



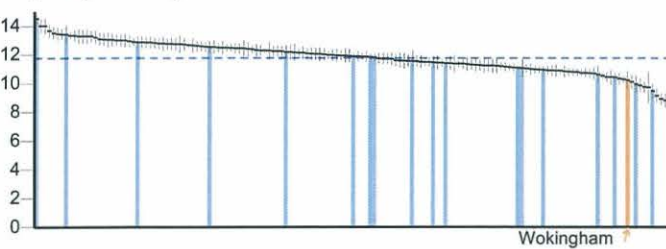
4.10 - Suicide rate (Male)



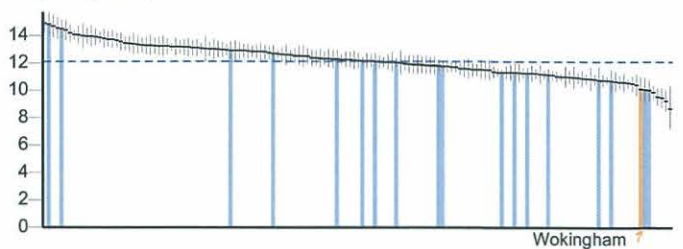
4.10 - Suicide rate (Female)



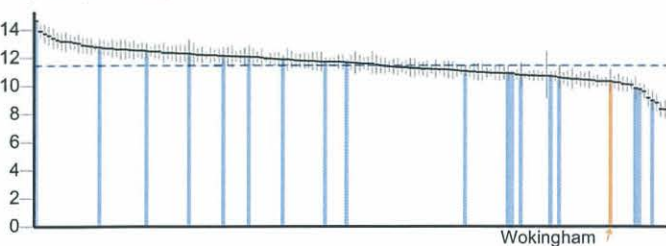
4.11 - Emergency readmissions within 30 days of discharge from hospital (Persons)



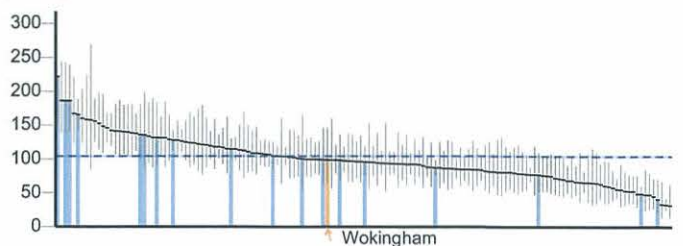
4.11 - Emergency readmissions within 30 days of discharge from hospital (Male)



4.11 - Emergency readmissions within 30 days of discharge from hospital (Female)



4.12i - Preventable sight loss - age related macular degeneration (AMD)

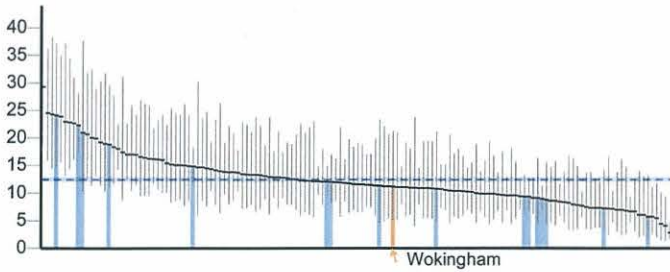


Key England value and confidence interval ↑ Wokingham Other local authority in South East

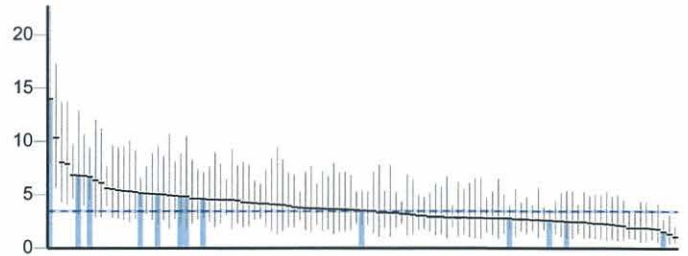
Wokingham

Healthcare and premature mortality continued

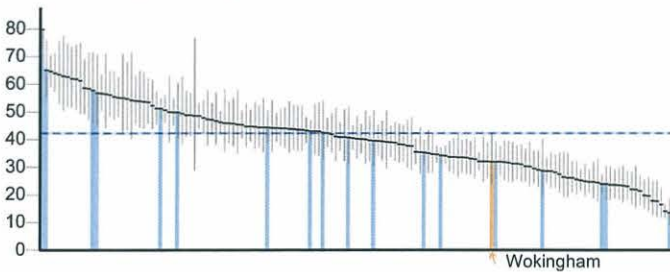
4.12ii - Preventable sight loss - glaucoma



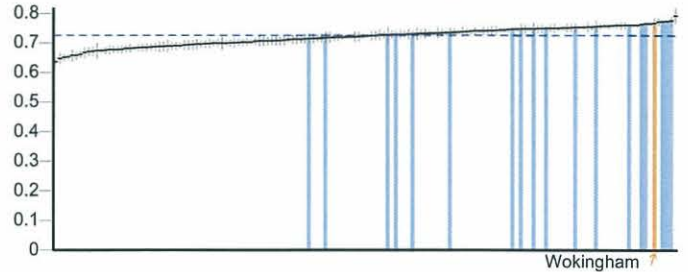
4.12iii - Preventable sight loss - diabetic eye disease



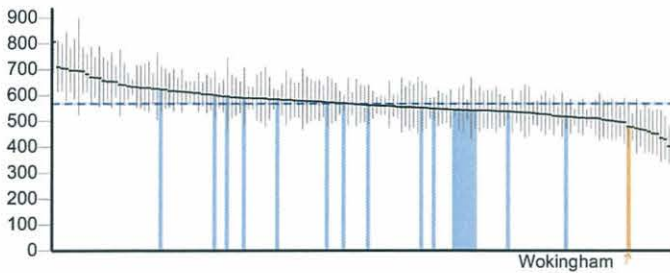
4.12iv - Preventable sight loss - sight loss certifications



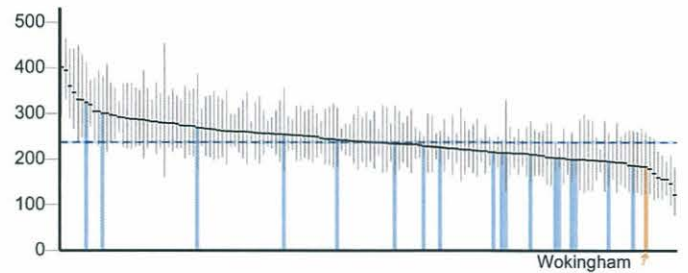
4.13 - Health related quality of life for older people



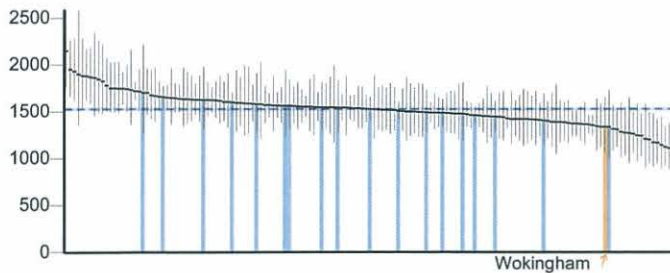
4.14i - Hip fractures in people aged 65 and over



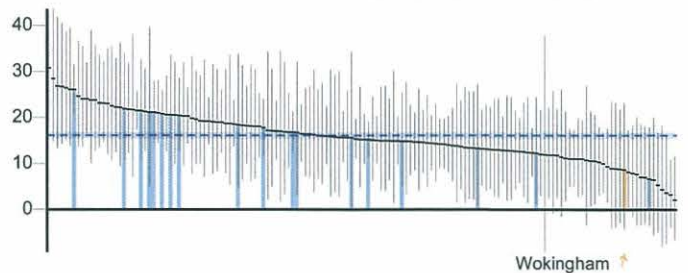
4.14ii - Hip fractures in people aged 65 and over - aged 65-79



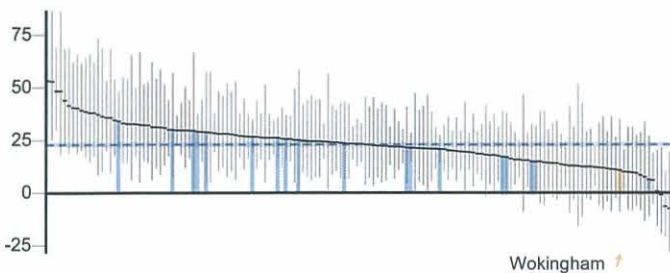
4.14iii - Hip fractures in people aged 65 and over - aged 80+



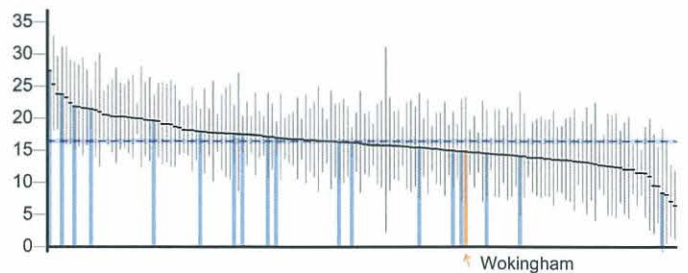
4.15i - Excess Winter Deaths Index (Single year, all ages)



4.15ii - Excess Winter Deaths Index (single year, ages 85+)



4.15iii - Excess Winter Deaths Index (3 years, all ages)

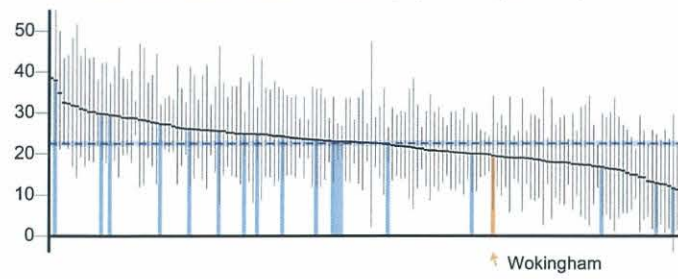


Key England value and confidence interval ↑ Wokingham Other local authority in South East

Healthcare and premature mortality continued

4.15iv - Excess Winter Deaths Index (3 years, ages 85+)

4.16 - Estimated diagnosis rate for people with dementia



No data

Key England value and confidence interval ↑ Wokingham Other local authority in South East

Definitions

Overarching indicators

0.1i Healthy life expectancy at birth: the average number of years a person would expect to live in good health based on contemporary mortality rates and prevalence of self-reported good health. 0.1ii Life expectancy at birth: the average number of years a person would expect to live based on contemporary mortality rates. 0.1iii Life expectancy at 65: the average number of years a person would expect to live based on contemporary mortality rates. 0.2i Slope index of inequality in life expectancy at birth based on national deprivation deciles within England: the range in years of life expectancy across the social gradient, from most to least deprived. 0.2ii Number of upper tier local authorities for which the local slope index of inequality in life expectancy (as defined in indicator 0.2iii) has decreased. 0.2iii Slope index of inequality in life expectancy at birth within English local authorities, based on local deprivation deciles: the range in years of life expectancy across the social gradient within each local authority, from most to least deprived. 0.2iv The gap in years between overall life expectancy at birth in each English local authority and life expectancy at birth for England as a whole. 0.2v Slope index of inequality in healthy life expectancy at birth based on national deprivation deciles within England: the range in years of life expectancy across the social gradient, from most to least deprived.

Wider determinants of health

1.01i Percentage of all dependent children under 20 in relative poverty (living in households where income is less than 60 per cent of median household income before housing costs) 1.01ii % of children in low income families (children living in families in receipt of out of work benefits or tax credits where their reported income is < 60% median income) for u-16s only 1.02i School Readiness: All children achieving a good level of development at the end of reception as a percentage of all eligible children. 1.02ii School Readiness: All children achieving a good level of development at the end of reception as a percentage of all eligible children by free school meal status 1.02iii School Readiness: Year 1 pupils achieving the expected level in the phonics screening check as a percentage of all eligible pupils 1.02iv School Readiness: The percentage of Year 1 pupils with free school meal status achieving the expected level in the phonics screening check 1.03 % of half days missed by pupils due to overall absence (incl. authorised and unauthorised absence) 1.04 Rate of 10-17 year olds receiving their first reprimand, warning or conviction per 100,000 population 1.05 % of 16-18 year olds not in education, employment or training (NEET) 1.06i % of adults with a learning disability who are known to the council, who are recorded as living in their own home or with their family 1.06ii % of adults (age 18-69) who are receiving secondary mental health services on the Care Programme Approach recorded as living independently, with or without support. 1.07 People in prison who have a mental illness or a significant mental illness 1.08i % point gap in the employment rate between those with a long-term health condition and the overall employment rate 1.08ii % point gap in the employment rate between those with a learning disability and the overall employment rate 1.08iii The percentage point gap between the percentage of working age adults who are receiving secondary mental health services and who are on the Care Programme Approach recorded as being employed (aged 18 to 69) and the percentage of all respondents in the Labour Force Survey classed as employed (aged 16 to 64) 1.09i % of employees who had at least one day off due to sickness absence in the previous working week 1.09ii % of working days lost due to sickness absence in the previous working week 1.10 Rate of people KSI on the roads, all ages, per 100,000 resident population 1.11 Rate of domestic abuse incidents recorded by the police per 1,000 population 1.12i Age-standardised rate of emergency hospital admissions for violence per 100,000 population 1.12ii Crude rate of violence against the person offences per 1,000 population 1.12iii Crude rate of sexual offences per 1,000 population 1.13i % of offenders who re-offend from a rolling 12 month cohort 1.13ii Average no. of re-offences committed per offender from a rolling 12 month cohort 1.14i Rate of complaints per year per LA about noise per thousand population 1.14ii The percentage of the population exposed to road, rail and air transport noise of 65 dB(A) or more, LAeq,16h per local authority (16h is the period 0700 – 2300) according to the results of the strategic noise mapping carried out as required by the Environmental Noise (England) Regulations 2006, as amended. 1.14iii The percentage of the population exposed to road, rail and air transport noise of 55 dB(A) or more, Lnight (LAeq,8h) per local authority (8h is the period 2300 – 0700) according to the results of the strategic noise mapping carried out as required by the Environmental Noise (England) Regulations 2006, as amended. 1.15i Homelessness acceptances per 1,000 households 1.15ii Households in temporary accommodation per 1,000 households 1.16 % of people using outdoor space for exercise/health reasons 1.17 The percentage of households that experience fuel poverty based on the "Low income, high cost" methodology 1.18i % of adult social care users who have as much social contact as they would like according to the Adult Social Care Users Survey 1.18ii The percentage of adult carers who have as much social contact as they would like according to the Personal Social Services Carers survey 1.19i % of adults aged 65+ who felt very safe or fairly safe walking alone in their local area during the day 1.19ii % of adults aged 65+ who felt very safe or fairly safe walking alone in their local area after dark 1.19iii % of adults aged 65+ who felt very safe or fairly safe alone in their own home at night

Health improvement

2.01 % of all live births at term with low birth weight 2.02i % of all mothers who breastfed their babies in the first 48hrs after delivery 2.02ii % of all infants due a 6-8 week check that are totally or partially breastfed 2.03 % of women who smoke at time of delivery 2.04 Rate of conceptions per 1,000 females aged 15-17 2.04 Rate of conceptions per 1,000 females aged 13-15 2.06i % of children aged 4-5 classified as overweight or obese 2.06ii % of children aged 10-11 classified as overweight or obese 2.07i Rate of hospital admissions caused by unintentional and deliberate injuries in children aged 0-14 years per 10,000 resident population 2.07ii Rate of hospital admissions caused by unintentional and deliberate injuries in children aged 0-4 years per 10,000 resident population 2.07iii Rate of hospital admissions caused by unintentional and deliberate injuries in young people aged 15-24 per 10,000 resident population 2.08 Average difficulties score for all looked after children aged 5-16 who have been in care for at least 12 months on 31st March 2.09i Smoking prevalence age 15 years - regular smokers 2.09ii Smoking prevalence age 15 years - occasional smokers 2.12 Percentage of adults classified as overweight or obese 2.13i Percentage of adults achieving at least 150 minutes of physical activity per week in accordance with UK Chief Medical Officer (CMO) recommended guidelines on physical activity. 2.13ii The percentage of adults classified as "inactive" 2.14 Prevalence of smoking among persons aged 18 years and over 2.14 Prevalence of smoking among persons aged 18 years and over - routine and manual 2.15i % of opiate drug users that left drug treatment successfully who do not re-present to treatment within 6 months 2.15ii % of non-opiate drug users that left treatment successfully who do not re-present to treatment within 6 months 2.16 Proportion of people assessed for substance dependence issues when entering prison who then required structured treatment and have not already received it in the community 2.17 % of QOF-recorded cases of diabetes registered with GP practices aged 17+ 2.18 Alcohol related admissions to hospital 2.19 The proportion of invasive malignancies of breast, prostate, colorectal, lung, bladder, kidney, ovary and uterus, non-Hodgkin lymphomas, and melanomas of skin, diagnosed at stage 1 or 2 2.20i % of eligible women screened adequately within the previous 3 years on 31st March 2.20ii % of eligible women screened adequately within the previous 3.5 or 5.5 years (according to age) on 31st March 2.21vii % of those offered diabetic eye screening who attend a digital screening event 2.22iii Cumulative percentage of the eligible population aged 40-74 offered an NHS Health Check in the five year period 2013/14 - 2017/18 2.22iv Cumulative percentage of eligible population aged 40-74 offered an NHS Health Check who received an NHS Health Check in the five year period 2013/14 - 2017/18 2.22v Cumulative percentage of eligible population aged 40-74 who received an NHS Health Check in the five year period 2013/14 - 2017/18 2.23i % of respondents scoring 0-4 to the question "Overall, how satisfied are you with your life nowadays?" 2.23ii % of respondents scoring 0-4 to the question "Overall, to what extent do you feel the things you do in your life are worthwhile?" 2.23iii % of respondents scoring 0-4 to the question "Overall, how happy did you feel yesterday?" 2.23iv % of respondents scoring 6-10 to the question "Overall, how anxious did you feel yesterday?" 2.23v Average Warwick-Edinburgh Mental Well-Being Scale (WEMWBS) score for adults aged 16+ 2.24i Age-sex standardised rate of emergency hospital admissions for injuries due to falls in persons aged 65+ per 100,000 population 2.24ii Age-sex standardised rate of emergency hospital admissions for injuries due to falls in males/females aged 65+ per 100,000 population 2.24iii Age-sex standardised rate of emergency hospital admissions for injuries due to falls in persons aged 65-79 per 100,000 population 2.24iv Age-sex standardised rate of emergency hospital admissions for injuries due to falls in persons aged 80+ per 100,000 population

Health protection

3.01 Fraction of all-cause adult mortality attributable to anthropogenic particulate air pollution (measured as fine particulate matter, PM2.5) 3.02i Crude rate of chlamydia screening detection per 100,000 young adults aged 15-24 using old National Chlamydia Screening Programme (NCSP) data 3.02ii Crude rate of chlamydia detection per 100,000 young adults aged 15-24 using CTAD data 3.03i % of eligible children who received 4 doses of Hepatitis B vaccine at any time by their 1st birthday 3.03ii % of eligible children who received 4 doses of Hepatitis B vaccine at any time by their 2nd birthday 3.03iii % of eligible children who received 3 doses of Dtap / IPV / Hib vaccine at any time by their 1st birthday 3.03iv % of eligible children who received 3 doses of Dtap / IPV / Hib vaccine at any time by their 2nd birthday 3.03v % of eligible children who have received the completed course of Men C vaccine by their 1st birthday 3.03vi % of eligible children who have received the complete course of PCV vaccine by their 1st birthday

3.03vi % of eligible children who have received one booster dose of Hib/Men C vaccine by their 2nd birthday 3.03vi % of eligible children who have received one booster dose of Hib/Men C vaccine by their 5th birthday 3.03vii % of eligible children who have received one booster dose of PCV vaccine by their 2nd birthday 3.03viii % of eligible children who have received one dose of MMR vaccine on or after their 1st birthday and anytime up to their 2nd birthday 3.03ix % of eligible children who have received one dose of MMR vaccine on or after their 1st birthday and at any time up to their 5th birthday 3.03x % of eligible children who have received two doses of MMR vaccine on or after their 1st birthday and at any time up to their 5th birthday 3.03xi % of girls aged 12-13 who have received all 3 doses of the HPV vaccine 3.03xiii % of eligible adults aged 65+ who have received the PPV vaccine 3.03xiv % of eligible adults aged 65+ who have received the flu vaccine 3.03xv % of at risk individuals aged 6 months to 65 years (excluding pregnant women) who have received the flu vaccine 3.04 % of adults (aged 15+) newly diagnosed with HIV with a CD4 count 3.05i % of people completing treatment for TB within 12 months prior to 31st December 3.05ii Rate of reported new cases of TB per year per 100,000 population 3.06 % of NHS organisations that have a Sustainable Development Management Plan that has been signed off at Board level

Healthcare and premature mortality

4.01 Rate of deaths in infants aged under 1 year per 1,000 live births 4.02 Mean severity of tooth decay in children aged five years based on the mean number of teeth per child sampled which were either actively decayed or had been filled or extracted – decayed/missing/filled teeth (d₃mft) 4.03 Age-standardised rate of mortality from causes considered preventable per 100,000 population 4.04i Age-standardised rate of mortality from all cardiovascular diseases (including heart disease and stroke) in persons less than 75 years of age per 100,000 population 4.04ii Age-standardised rate of mortality considered preventable from all cardiovascular diseases (incl. heart disease and stroke) in those aged 4.05i Age-standardised rate of mortality from all cancers in persons less than 75 years of age per 100,000 population 4.05ii Age-standardised rate of mortality considered preventable from all cancers in those aged 4.06i Age-standardised rate of mortality from liver disease in persons less than 75 years of age per 100,000 population 4.06ii Age-standardised rate of mortality considered preventable from liver disease in those aged 4.07i Age-standardised rate of mortality from respiratory disease in persons less than 75 years per 100,000 population 4.07ii Age-standardised rate of mortality considered preventable from respiratory disease in those aged 4.08 Age-standardised rate of mortality from communicable diseases per 100,000 population 4.09 Excess under 75 mortality in adults with serious mental illness 4.10 Age-standardised mortality rate from suicide and injury of undetermined intent per 100,000 population 4.11 Indirectly standardised % of emergency admissions to any hospital within 30 days of the previous discharge from hospital 4.12i Crude rate of sight loss due to age related macular degeneration (AMD) in those aged 65+ per 100,000 population 4.12ii Crude rate of sight loss due to glaucoma in those aged 40+ per 100,000 population 4.12iii Crude rate of sight loss due to diabetic eye disease in those aged 12+ per 100,000 population 4.12iv Crude rate of sight loss certifications per 100,000 population 4.13 Average health status score for adults aged 65 and over 4.14i Age-sex standardised rate of emergency admissions for fractured neck of femur in those aged 65+ per 100,000 population 4.14ii Age-sex standardised rate of emergency admissions for fractured neck of femur in those aged 65-79 per 100,000 population 4.14iii Age-sex standardised rate of emergency admissions for fractured neck of femur in those aged 80+ per 100,000 population 4.15i Excess Winter Deaths Index (Single year, all ages) 4.15ii Excess Winter Deaths Index (single year, age 85+) 4.15iii Excess Winter Deaths Index (3 years, all ages) 4.15iv Excess Winter Deaths Index (3 years, age 85+) 4.16 Estimated diagnosis rate for people with dementia

Public Health Outcomes Framework Summary for Wokingham (Nov-14)

This summary only includes indicators in the Nov-14 update. The full PHOF profile for Wokingham can be found on Huddle or on the main PHOF website (<http://www.phoutcomes.info/>).

Indicators in the PHOF are benchmarked against comparator groups in either a RAG (Red-Amber-Green) or Blue (Blue-Amber-Blue) scale. The RAG scale is used when it is clear whether a high value is 'good' or 'bad'. The Blue scale is used when it is not straightforward to determine this, but still enables you to quickly see whether an LA is performing significantly higher or lower than the comparator group. Indicators that are shaded white are not benchmarked, as they may have data quality issues or do not have confidence intervals to compare against.

Indicator	Latest Update	Value	Change to previous outturn	Compared to deprivation decile	Compared to England outturn	Notes	
1.08ii	Percentage point gap in the employment rate between those with a learning disability and the overall employment rate	2013/14	60.7	No significant change	Not comparable	Not comparable	
1.09i	Sickness absence - The percentage of employees who had at least one day off in the previous week	2010-12	2.7%	Significantly worsened	Significantly worse	Significantly worse	WBC's level of sickness absence has increased at a faster rate than the national level. WBC has moved from 'similar' to England to 'significantly worse'.
1.09ii	Sickness absence - The percentage of working days lost due to sickness absence	2010-12	1.4%	Significantly worsened	Significantly worse	Significantly better	The number of working days lost due to sickness absence has increased in WBC, but is still 'significantly better' than England.
1.10	Killed and seriously injured casualties on England's roads	2011-13	29.1	No significant change	Significantly better	Significantly better	137 KSI casualties in WBC over the last 3 years. This is similar rate to previous years.
1.12ii	Violent crime (including sexual violence) - violence offences per 1,000 population	2013/14	4.6	Significantly increased	Not comparable	Not comparable	727 violence offences recorded in WBC during 2013/14. WBC's rate is the lowest in the deprivation decile.
1.12iii	Violent crime (including sexual violence) - sexual offences per 1,000 population	2013/14	0.6	No significant change	Not comparable	Not comparable	90 sexual offences recorded in WBC during 2013/14.
1.14i	The percentage of the population affected by noise - Number of complaints about noise	2012/13	3.4	Significantly worsened	Significantly better	Significantly better	2nd lowest level of complaints in the deprivation decile, although this is an increase on previous years.
1.15i	Statutory homelessness - homelessness acceptances	2013/14	0.4	Significantly increased	Significantly lower	Significantly lower	WBC has the lowest level of homelessness acceptances in the deprivation decile, although the rate has increased on 2012/13's figures.
1.15ii	Statutory homelessness - households in temporary accommodation	2013/14	0.1	No significant change	Significantly better	Significantly better	WBC had the lowest level of households in temporary accommodation in the deprivation decile.
1.16	Utilisation of outdoor space for exercise/health reasons	Mar 2013-Feb 2014	Data not available				WBC's value cannot be published, as the numbers involved in the survey were too small.

Indicator		Latest Update	Value	Change to previous outturn	Compared to deprivation decile	Compared to England outturn	Notes
2.01	Low birth weight of term babies	2012	1.7%	No significant change	No significant difference	Significantly better	WBC's level of low birth weight babies has continued to decrease from 2009.
2.02i	Breastfeeding - Breastfeeding initiation	2013/14	Data not available	Change in recording			Please note change in recording for these indicators: 2013/14 figures are based on a mother's postcode and not on the provider/hospital location. Figures for 2012/13 and earlier were for Berkshire West as a whole. Figures for breastfeeding initiation and prevalence have not been published, as the data quality was poor (i.e.. too many babies did not have a breastfeeding status recorded)
2.02ii	Breastfeeding - Breastfeeding prevalence at 6-8 weeks after birth	2013/14	Data not available	Change in recording			
2.03	Smoking status at time of delivery	2013/14	5.9%	Change in recording	Significantly better	Significantly better	
2.14i	Smoking prevalence - adults	2013	10.5%	Significantly improved		Significantly better	WBC's prevalence continues to decrease and is the lowest level in England.
2.14ii	Smoking prevalence - Routine and Manual workers (adults)	2013	22.5%	No significant change		No significant difference	
2.15i	Successful completion of drug treatment - opiate users	2013	8.2%	No significant change	No significant difference	No significant difference	
2.15ii	Successful completion of drug treatment - non-opiate users	2013	35.5%	No significant change	No significant difference	No significant difference	
2.16	People entering prison with substance dependence issues who are previously not known to community treatment	2012/13	Data not available	New indicator			Value not published to avoid disclosure by differencing
2.18	Alcohol-related hospital admissions per 100,000 population	2012/13	365.0	No significant change	Significantly better	Significantly better	WBC's admission rate has increased since 2010/11, but is still the lowest level in England.
2.20i	Cancer screening coverage - breast cancer	2014	81.7%	Significantly worsened	Significantly better	Significantly better	WBC's coverage has decreased, but is still 'significantly better' than England.
2.20ii	Cancer screening coverage - cervical cancer	2014	78.4%	No significant change	Significantly better	Significantly better	
2.21vii	Access to non-cancer screening programmes - diabetic retinopathy (figures based on PCT boundary - Berkshire East or Berkshire West)	2012/13	73.3%	No significant change	Significantly worse	Significantly worse	WBC's figure is based on Berkshire West PCT boundary. There has been an improvement since 2010/11, but this is still significantly lower than England and is the lowest (worst) level in the deprivation decile.

43

Indicator		Latest Update	Value	Change to previous outturn	Compared to deprivation decile	Compared to England outturn	Notes
3.06	Public sector organisations with a board approved Sustainable Development Management (SDM) plan	2013/14	60.0%	No significant change	No significant difference	No significant difference	PHE note that the recent creation of new organisations (e.g. CCGs) has resulted in a low proportion of organisations confirming that they have a SDM Plan in place.
4.03	Mortality rate from causes considered preventable	2011-13	132.0	No significant change	Significantly better	Significantly better	Mortality rate continues to reduce for WBC. 3rd lowest (best) mortality rate in the deprivation decile.
4.04i	Under 75 mortality rate from all cardiovascular diseases	2011-13	54.9	No significant change	No significant difference	Significantly better	Mortality rate continues to reduce for WBC. 2nd lowest (best) mortality rate in the deprivation decile.
4.04ii	Under 75 mortality rate from cardiovascular diseases considered preventable	2011-13	37.0	No significant change	No significant difference	Significantly better	
4.05i	Under 75 mortality rate from cancer	2011-13	120.3	No significant change	No significant difference	Significantly better	Mortality rate continues to reduce for WBC. 3rd lowest (best) mortality rate in the deprivation decile.
4.05ii	Under 75 mortality rate from cancer considered preventable	2011-13	64.1	No significant change	No significant difference	Significantly better	WBC mortality rate is 2nd lowest (best) in the deprivation decile.
4.06i	Under 75 mortality rate from liver disease	2011-13	13.5	No significant change	No significant difference	Significantly better	WBC mortality rate has decreased and is now 'significantly better' than England.
4.06ii	Under 75 mortality rate from liver disease considered preventable	2011-13	11.2	No significant change	No significant difference	Significantly better	WBC mortality rate has decreased and is now 'significantly better' than England.
4.07i	Under 75 mortality rate from respiratory disease	2011-13	23.5	No significant change	No significant difference	Significantly better	WBC's mortality rate has increased, but is still 'significantly better' than England for persons and men. The female mortality rate has increased more significantly and is now 'similar' to England.
4.07ii	Under 75 mortality rate from respiratory disease considered preventable	2011-13	8.4	No significant change	Significantly better	Significantly better	WBC's mortality rate is the lowest (best) in the deprivation decile and 2nd lowest in England.
4.08	Mortality from communicable diseases	2011-13	69.8	No significant change	Significantly worse	No significant difference	WBC's mortality rate is the 4th highest (worst) in the deprivation decile.
4.10	Suicide rate	2011-13	Data not available				Value cannot be published, as the number of cases is too small.
4.13	Health-related quality of life for older people	2012/13	0.77	No significant change	No significant difference	Significantly better	

4-7

Public Health Outcomes Framework Summary for Wokingham

Latest update: November 2014

Indicators in the PHOF are benchmarked against comparator groups in either a RAG (Red-Amber-Green) or Blue (Blue-Amber-Blue) scale. The RAG scale is used when it is clear whether a high value is 'good' or 'bad'. The Blue scale is used when it is not straightforward to determine this, but still enables you to quickly see whether an LA is performing significantly higher or lower than the comparator group. Indicators that are shaded white are not benchmarked, as they may have data quality issues or do not have confidence intervals to compare against.

Additional information about the Public Health Outcomes Framework can be found at: <http://www.phoutcomes.info/>

Indicator <i>(hover over the indicator's title for a definition)</i>		Domain	Latest Update	Wokingham		Least deprived decile		England		Next PHOF update
				Outturn	Direction of Travel on previous outturn	Outturn	WBC comparison to Decile outturn	Outturn	WBC comparison to England outturn	
Indicators highlighted yellow were included in the Nov-14 update.										
0.1i(M)	Healthy life expectancy at birth (Male)	Overarching	2010-12	69.2	No significant change			63.4	Significantly better	Aug-15
0.1i(F)	Healthy life expectancy at birth (Female)	Overarching	2010-12	71.0	No significant change			64.1	Significantly better	Aug-15
0.1ii(M)	Life expectancy at birth (Male)	Overarching	2010-12	81.6	No significant change			79.2	Significantly better	Feb-15
0.1ii(F)	Life expectancy at birth (Female)	Overarching	2010-12	84.5	No significant change			83.0	Significantly better	Feb-15
0.1iii(M)	Life expectancy at 65 (Male)	Overarching	2010-12	19.8	No significant change			18.6	Significantly better	Feb-15
0.1iii(F)	Life expectancy at 65 (Female)	Overarching	2010-12	21.8	No significant change			21.1	Significantly better	Feb-15
0.2iii(M)	Slope index of inequality in life expectancy at birth within English local authorities (Male)	Overarching	2010-12	5.5	Significantly increased					Feb-15
0.2iii(F)	Slope index of inequality in life expectancy at birth within English local authorities (Female)	Overarching	2010-12	4.5	No significant change					Feb-15
0.2iv(M)	Gap in life expectancy at birth between each LA and England as a whole (Male)	Overarching	2010-12	2.4	No significant change			0.0	Significantly better	Feb-15
0.2iv(F)	Gap in life expectancy at birth between each LA and England as a whole (Female)	Overarching	2010-12	1.5	No significant change			0.0	Significantly better	Feb-15
1.01i	Children in poverty (all dependent children under 20)	WDoH	2011	6.6%	Significantly improved	11.4%	Significantly better	20.1%	Significantly better	Feb-15
1.01ii	Children in poverty (under 16s)	WDoH	2011	6.9%	Significantly improved	11.8%	Significantly better	20.6%	Significantly better	Feb-15
1.02i(a)	School Readiness: Children achieving a good level of development at the end of reception	WDoH	2012/13	47.4%		55.3%	Significantly worse	51.7%	Significantly worse	Feb-15
1.02i(b)	School Readiness: Children achieving a good level of development at end of reception by free school meal status	WDoH	2012/13	25.6%		34.2%	Significantly worse	36.2%	Significantly worse	Feb-15
1.02ii(a)	School Readiness: Year 1 pupils achieving the expected level in the phonics screenings check	WDoH	2012/13	62.2%	Significantly improved			69.1%	Significantly worse	Feb-15
1.02ii(b)	School Readiness: Year 1 pupils with free school meals status achieving expected level in phonics screening check	WDoH	2012/13	37.2%	Significantly improved			55.8%	Significantly worse	Feb-15
1.03	Pupil absence	WDoH	2012/13	4.7%	No significant change	5.0%	Significantly better	5.26%	Significantly better	Aug-15
1.04	First entrants to the youth justice system	WDoH	2013	289.4	No significant change	324.6	No significant difference	440.9	Significantly better	Aug-15
1.05	16-18 year olds not in education, employment or training	WDoH	2013	3.1%	Significantly improved	3.9%	Significantly better	5.3%	Significantly better	Aug-15
1.06i	Adults with a learning disability who live in stable and appropriate accommodation	WDoH	2012/13	72.1%	No significant change			73.5%	Not comparable	Feb-15
1.06ii	Adults in contact with secondary mental health services who live in stable and appropriate accommodation	WDoH	2012/13	94.1%	Significantly increased			58.5%	Not comparable	Feb-15
1.07	People in prison who have a mental illness or a significant mental illness	WDoH	2012/13					4.35%	Not comparable	Aug-15
1.08i	Gap in the employment rate between those with a long-term health condition and the overall employment rate	WDoH	2012	-1.8				7.1	Not comparable	Feb-15
1.08ii	Gap in the employment rate between those with a learning disability and the overall employment rate	WDoH	2013/14	63.3	No significant change			65.1	Not comparable	Nov-15
1.08iii	Gap in the employment rate between those receiving secondary health services and the overall employment rate	WDoH	2012/13	60.7	Significantly decreased			62.3	Not comparable	May-15
1.09i	Sickness absence - The percentage of employees who had at least one day off in the previous week	WDoH	2010-12	2.7%	Significantly worsened	2.3%	Significantly worse	2.5%	Significantly worse	Nov-15
1.09ii	Sickness absence - The percent of working days lost due to sickness absence	WDoH	2010-12	1.4%	Significantly worsened	1.4%	Significantly worse	1.6%	Significantly better	Nov-15
1.10	Killed and seriously injured casualties on England's roads	WDoH	2011-13	29.1	No significant change	41.5	Significantly better	39.7	Significantly better	Nov-15
1.11	Rate of domestic abuse incidents reported to the police per 1,000 population	WDoH	2012/13	19.4	Significantly increased			18.8	Not comparable	Feb-15
1.12i	Violent crime (including sexual violence) - hospital admissions for violence	WDoH	2010/11-12/13	9.3	No significant change			57.6	Significantly better	Feb-15
1.12ii	Violent crime (including sexual violence) - violence offences per 1,000 population	WDoH	2013/14	4.6	Significantly increased	7.9	Not comparable	11.1	Not comparable	Nov-15
1.12iii	Violent crime (including sexual violence) - sexual offences per 1,000 population	WDoH	2013/14	0.6	No significant change	0.7	Not comparable	1.0	Not comparable	Nov-15

Indicator (hover over the indicator's title for a definition)		Domain	Latest Update	Wokingham		Least deprived decile		England		Next PHOF update
Indicators highlighted yellow were included in the Nov-14 update. ↓				Outturn	Direction of Travel on previous outturn	Outturn	WBC comparison to Decile outturn	Outturn	WBC comparison to England outturn	
1.13i	Re-offending levels - percentage of offenders who re-offend	WDoH	2011	23.4%	No significant change	23.6%	Not comparable	26.9%	Not comparable	Feb-15
1.13ii	Re-offending levels - average number of re-offences per offender	WDoH	2011	0.6	Significantly decreased	0.7	Not comparable	0.8	Not comparable	Feb-15
1.14i	The percentage of the population affected by noise - Number of complaints about noise	WDoH	2012/13	3.41	Significantly worsened	5.0	Significantly better	7.5	Significantly better	Nov-15
1.14ii	The percentage of the population exposed to road, rail and air transport noise of 65 dB(A) or more in the daytime	WDoH	2011	3.9%	Significantly decreased	4.6%	Not comparable	5.2%	Not comparable	
1.14iii	The percentage of the population exposed to road, rail and air transport noise of 55 dB(A) or more in the daytime	WDoH	2011	11.3%	Significantly decreased	8.6%	Not comparable	8.0%	Not comparable	
1.15i	Statutory homelessness - homelessness acceptances	WDoH	2013/14	0.4	Significantly increased	1.5	Significantly lower	2.3	Significantly lower	Nov-15
1.15ii	Statutory homelessness - households in temporary accommodation	WDoH	2013/14	0.1	No significant change	1.3	Significantly better	2.6	Significantly better	Nov-15
1.16	Utilisation of outdoor space for exercise/health reasons	WDoH	Mar 2013- Feb 2014	Data not available				17.1%		
1.17	Fuel Poverty	WDoH	2012	5.6%	Significantly improved	7.7%	Significantly better	10.4%	Significantly better	Aug-15
1.18i	Social Isolation: % of adult social care users who have as much social contact as they would like	WDoH	2012/13	46.6%	No significant change			43.2%	No significant difference	Feb-15
1.18ii	Social Isolation: % of carers who have as much social contact as they would like	WDoH	2012/13	42.2%				41.3%	No significant difference	Feb-15
1.19i	Older People's perception of community safety - safe in local area during the day	WDoH	2012/13					97.5%		Feb-15
1.19ii	Older People's perception of community safety - safe in local area after dark	WDoH	2012/13					61.9%		Feb-15
1.19iii	Older People's perception of community safety - safe in own home at night	WDoH	2012/13					94.3%		Feb-15
2.01	Low birth weight of term babies	Health Improvement	2012	1.7%	No significant change	2.3%	No significant difference	2.8%	Significantly better	Nov-15
2.02i	Breastfeeding - Breastfeeding initiation	Health Improvement	2013/14	Data not available	Change in recording	79.2%		73.9%		Nov-15
2.02ii	Breastfeeding - Breastfeeding prevalence at 6-8 weeks after birth	Health Improvement	2013/14	Data not available	Change in recording	46.2%		45.9%		Nov-15
2.03	Smoking status at time of delivery	Health Improvement	2013/14	5.9%	Change in recording	8.4%	Significantly better	12.0%	Significantly better	Nov-15
2.04i	Under 18 conceptions	Health Improvement	2012	15.4	No significant change	19.17	No significant difference	27.7	Significantly better	May-15
2.04ii	Under 18 conceptions: conceptions in those aged 16 and under	Health Improvement	2012	0.0	No significant change	3.70	Significantly better	5.6	Significantly better	May-15
2.06i	Excess weight in 4-5 year olds	Health Improvement	2012/13	16.6%	No significant change	19.1%	Significantly better	22.2%	Significantly better	Feb-15
2.06ii	Excess weight in 10-11 year olds	Health Improvement	2012/13	26.2%	Significantly improved	28.3%	No significant difference	33.3%	Significantly better	Feb-15
2.07(a)	Hospital admissions caused by unintentional and deliberate injuries in children (aged 0-14 years)	Health Improvement	2012/13	73.2	Significantly improved			103.8	Significantly better	Feb-15
2.07(b)	Hospital admissions caused by unintentional and deliberate injuries in children (aged 0-4 years)	Health Improvement	2012/13	89.7	Significantly improved			134.7	Significantly better	Feb-15
2.07ii	Hospital admissions caused by unintentional and deliberate injuries in young people (aged 15-24)	Health Improvement	2012/13	85.5	No significant change			130.7	Significantly better	Feb-15
2.08	Emotional well-being of looked after children	Health Improvement	2012/13	16.1	Significantly decreased			14.0	Not comparable	May-15
2.09ii	Smoking prevalence at 15 years old (regular smoker)	Health Improvement	2013					8.0%	Not comparable	Nov-15
2.09iii	Smoking prevalence at 15 years old (occasional smoker)	Health Improvement	2013					10.0%	Not comparable	Nov-15
2.12	Excess weight in adults	Health Improvement	2012	57.4%		62.3%	Significantly better	63.8%	Significantly better	Feb-15
2.13i	Percentage of physically active and inactive adults - active adults	Health Improvement	2013	61.8%	Significantly worsened	59.1%	No significant difference	55.6%	Significantly better	Aug-15
2.13ii	Percentage of active and inactive adults - inactive adults	Health Improvement	2013	22.5%	Significantly worsened	25.0%	No significant difference	28.9%	Significantly better	Aug-15
2.14i	Smoking prevalence - adults	Health Improvement	2013	10.5%	Significantly improved			18.4%	Significantly better	Nov-15
2.14ii	Smoking prevalence - Routine and Manual workers (adults)	Health Improvement	2013	22.5%	No significant change			28.6%	No significant difference	Nov-15
2.15i	Successful completion of drug treatment - opiate users	Health Improvement	2013	8.2%	No significant change	9.3%	No significant difference	7.8%	No significant difference	Nov-15
2.15ii	Successful completion of drug treatment - non-opiate users	Health Improvement	2013	35.5%	No significant change	36.3%	No significant difference	37.7%	No significant difference	Nov-15
2.16	People entering prison with substance dependence issues who are previously not known to community treatment	Health Improvement	2012/13	Data not available		50.3%		46.9%		Nov-15

Indicator <i>(hover over the indicator's title for a definition)</i>		Domain	Latest Update	Wokingham		Least deprived decile		England		Next PHOF update
Indicators highlighted yellow were included in the Nov-14 update. ↓				Outturn	Direction of Travel on previous outturn	Outturn	WBC comparison to Decile outturn	Outturn	WBC comparison to England outturn	
2.17	Recorded diabetes	Health Improvement	2012/13	4.3%	No significant change	5.2%	Significantly lower	6.0%	Significantly lower	Feb-15
2.18	Alcohol-related hospital admissions per 100,000 population	Health Improvement	2012/13	365.0	No significant change	469.53	Significantly better	636.9	Significantly better	Nov-15
2.19	Cancer diagnosed at early stage (Experimental Statistics)	Health Improvement	2012					41.6%		Aug-15
2.20i	Cancer screening coverage - breast cancer	Health Improvement	2014	81.7%	Significantly worsened	77.9%	Significantly better	75.9%	Significantly better	Nov-15
2.20ii	Cancer screening coverage - cervical cancer	Health Improvement	2014	78.4%	No significant change	76.1%	Significantly better	74.2%	Significantly better	Nov-15
2.21vii	Access to non-cancer screening programmes - diabetic retinopathy (figures based on PCT boundary - Berkshire East or Berkshire West)	Health Improvement	2012/13	73.3%	No significant change	80.1%	Significantly worse	79.1%	Significantly worse	Nov-15
2.22iii	Cumulative percentage of the eligible population aged 40-74 offered an NHS Health Check in a five year period (2013/14 - 2017/18)	Health Improvement	2013/14	8.2%		16.6%	Significantly worse	18.5%	Significantly worse	Aug-15
2.22iv	Cumulative percentage of eligible population aged 40-74 offered an NHS Health Check who received an NHS Health Check in a five year period (2013/14 - 2017/18)	Health Improvement	2013/14	49.3%		44.4%	Significantly better	49.0%	No significant difference	Aug-15
2.22v	Cumulative percentage of eligible population aged 40-74 who received an NHS Health Check in a five year period (2013/14 - 2017/18)	Health Improvement	2013/14	4.0%		7.3%	Significantly worse	9.0%	Significantly worse	Aug-15
2.23i	Self-reported well-being - people with a low satisfaction score	Health Improvement	2012/13	4.0%	Significantly improved			5.8%	Significantly better	Feb-15
2.23ii	Self-reported well-being - people with a low worthwhile score	Health Improvement	2012/13	Data not available				4.4%		Feb-15
2.23iii	Self-reported well-being - people with a low happiness score	Health Improvement	2012/13	7.8%	No significant change			10.4%	Significantly better	Feb-15
2.23iv	Self-reported well-being - people with a high anxiety score	Health Improvement	2012/13	21.9%	No significant change			21.0%	No significant difference	Feb-15
2.23v	Average Warwick - Edinburgh Mental Well-Being Scale (WEMWBS) score for adults aged 16+	Health Improvement	2010-12					37.7		Nov-15
2.24i	Injuries due to falls in people aged 65 and over	Health Improvement	2012/13	1,318	No significant change	1,812	Significantly better	2,011	Significantly better	May-15
2.24ii	Injuries due to falls in people aged 65 and over - aged 65-79	Health Improvement	2012/13	558	No significant change	843	Significantly better	975	Significantly better	May-15
2.24iii	Injuries due to falls in people aged 65 and over - aged 80+	Health Improvement	2012/13	3,521	No significant change	4,624	Significantly better	5,015	Significantly better	May-15
3.01	Fraction of mortality attributable to particulate air pollution	Health Protection	2012	5.3%	Significantly decreased			5.1%	Not comparable	
3.02ii	Chlamydia diagnoses (15-24 year olds) - CTAD	Health Protection	2013	966	No significant change	1,518	Significantly worse	2,016	Significantly worse	Aug-15
3.03ia	Population vaccination coverage - Hepatitis B (1 year old)	Health Protection	2012/13	100.0%	No significant change					Feb-15
3.03ib	Population vaccination coverage - Hepatitis B (2 year old)	Health Protection	2012/13	82.6%	No significant change					Feb-15
3.03iia	Population vaccination coverage - Dtap / IPV / Hib (1 year old)	Health Protection	2012/13	94.2%	Significantly worsened	94.4%	No significant difference	94.7%	No significant difference	Feb-15
3.03iib	Population vaccination coverage - Dtap / IPV / Hib (2 year old)	Health Protection	2012/13	96.6%	No significant change	95.4%	Significantly better	96.3%	No significant difference	Feb-15
3.03iv	Population vaccination coverage - MenC	Health Protection	2012/13	92.9%	No significant change	93.6%	No significant difference	93.9%	No significant difference	Feb-15
3.03v	Population vaccination coverage - PCV	Health Protection	2012/13	93.5%	No significant change	94.0%	No significant difference	94.4%	No significant difference	Feb-15
3.03via	Population vaccination coverage - Hib / MenC booster (2 years old)	Health Protection	2012/13	93.5%	Significantly improved	92.1%	Significantly better	92.7%	No significant difference	Feb-15
3.03vib	Population vaccination coverage - Hib / MenC booster (5 years old)	Health Protection	2012/13	91.1%	Significantly improved	90.8%	No significant difference	91.5%	No significant difference	Feb-15
3.03vii	Population vaccination coverage - PCV booster	Health Protection	2012/13	93.6%	Significantly improved	92.1%	Significantly better	92.5%	Significantly better	Feb-15
3.03viii	Population vaccination coverage - MMR for one dose (2 years old)	Health Protection	2012/13	94.5%	Significantly improved	91.9%	Significantly better	92.3%	Significantly better	Feb-15
3.03ix	Population vaccination coverage - MMR for one dose (5 years old)	Health Protection	2012/13	95.1%	Significantly improved	92.6%	Significantly better	93.9%	Significantly better	Feb-15
3.03x	Population vaccination coverage - MMR for two doses (5 years old)	Health Protection	2012/13	90.9%	Significantly improved	87.4%	Significantly better	87.7%	Significantly better	Feb-15
3.03xii	Population vaccination coverage - HPV	Health Protection	2012/13	84.4%	Significantly worsened	83.2%	No significant difference	86.1%	No significant difference	Feb-15
3.03xiii	Population vaccination coverage - PPV	Health Protection	2012/13	74.6%	Significantly improved	69.6%	Significantly better	69.1%	Significantly better	Feb-15
3.03xiv	Population vaccination coverage - Flu (aged 65+)	Health Protection	2012/13	75.9%	No significant change	73.8%	Significantly better	73.4%	Significantly better	Feb-15
3.03xv	Population vaccination coverage - Flu (at risk individuals)	Health Protection	2012/13	56.4%	Significantly improved	51.1%	Significantly better	51.3%	Significantly better	Feb-15
3.04	People presenting with HIV at a late stage of infection	Health Protection	2010-12	66.7%	No significant change	51.4%	No significant difference	48.3%	No significant difference	Feb-15

Indicator (hover over the indicator's title for a definition)		Domain	Latest Update	Wokingham		Least deprived decile		England		Next PHOF update
				Outturn	Direction of Travel on previous outturn	Outturn	WBC comparison to Decile outturn	Outturn	WBC comparison to England outturn	
Indicators highlighted yellow were included in the Nov-14 update. ↓										
3.05i	Treatment completion for TB	Health Protection	2012	0.0%	No significant change			82.8%	Significantly worse	
3.05ii	TB incidence	Health Protection	2010-12	8.4	No significant change			15.1	Significantly better	
3.06	Public sector organisations with a board approved sustainable development management plan	Health Protection	2013/14	60.0%	No significant change	40.8%	No significant difference	41.6%	No significant difference	Nov-15
4.01	Infant mortality	Healthcare & Premature Mortality	2010-12	2.9	No significant change	3.1	No significant difference	4.1	No significant difference	May-15
4.02	Tooth decay in children aged 5	Healthcare & Premature Mortality	2011/12	0.4				0.9	Significantly better	
4.03	Mortality rate from causes considered preventable	Healthcare & Premature Mortality	2011-13	132.0	No significant change	147.9	Significantly better	183.9	Significantly better	Nov-15
4.04i	Under 75 mortality rate from all cardiovascular diseases	Healthcare & Premature Mortality	2011-13	54.9	No significant change	61.9	No significant difference	78.2	Significantly better	Nov-15
4.04ii	Under 75 mortality rate from cardiovascular diseases considered preventable	Healthcare & Premature Mortality	2011-13	37.0	No significant change	39.4	No significant difference	50.9	Significantly better	Nov-15
4.05i	Under 75 mortality rate from cancer	Healthcare & Premature Mortality	2011-13	120.3	No significant change	126.4	No significant difference	144.4	Significantly better	Nov-15
4.05ii	Under 75 mortality rate from cancer considered preventable	Healthcare & Premature Mortality	2011-13	64.1	No significant change	70.7	No significant difference	83.8	Significantly better	Nov-15
4.06i	Under 75 mortality rate from liver disease	Healthcare & Premature Mortality	2011-13	13.5	No significant change	13.4	No significant difference	17.9	Significantly better	Nov-15
4.06ii	Under 75 mortality rate from liver disease considered preventable	Healthcare & Premature Mortality	2011-13	11.2	No significant change	11.8	No significant difference	15.7	Significantly better	Nov-15
4.07i	Under 75 mortality rate from respiratory disease	Healthcare & Premature Mortality	2011-13	23.5	No significant change	24.1	No significant difference	33.2	Significantly better	Nov-15
4.07ii	Under 75 mortality rate from respiratory disease considered preventable	Healthcare & Premature Mortality	2011-13	8.4	No significant change	12.1	Significantly better	17.9	Significantly better	Nov-15
4.08	Mortality from communicable diseases	Healthcare & Premature Mortality	2011-13	69.8	No significant change	61.0	Significantly worse	62.2	No significant difference	Nov-15
4.09	Excess under 75 mortality rate in adults with serious mental illness	Healthcare & Premature Mortality	2011/12	407.4	No significant change			337.4	No significant difference	Aug-15
4.10	Suicide rate	Healthcare & Premature Mortality	2011-13	Data not available		7.5		8.8		Nov-15
4.11	Emergency readmissions within 30 days of discharge from hospital	Healthcare & Premature Mortality	2011/12	10.2	No significant change			11.8	Significantly better	May-15
4.12i	Preventable sight loss - age related macular degeneration (AMD)	Healthcare & Premature Mortality	2012/13	98.9	No significant change	104.9	No significant difference	104.4	No significant difference	Aug-15
4.12ii	Preventable sight loss - Glaucoma	Healthcare & Premature Mortality	2012/13	11.2	No significant change	11.3	No significant difference	12.5	No significant difference	Aug-15
4.12iii	Preventable sight loss - Diabetic eye disease	Healthcare & Premature Mortality	2012/13	Data not available		3.6		3.5		Aug-15
4.12iv	Preventable sight loss - Sight loss certifications	Healthcare & Premature Mortality	2012/13	31.9	No significant change	40.3	No significant difference	42.3	Significantly lower	Aug-15
4.13	Health-related quality of life for older people	Healthcare & Premature Mortality	2012/13	0.77	No significant change	0.76	No significant difference	0.73	Significantly better	Nov-15
4.14i	Hip fractures in people aged 65 and over	Healthcare & Premature Mortality	2012/13	479	Significantly improved	551	No significant difference	568	No significant difference	May-15
4.14ii	Hip fractures in people aged 65 and over - aged 65-79	Healthcare & Premature Mortality	2012/13	184	No significant change	220	No significant difference	237	No significant difference	May-15
4.14iii	Hip fractures in people aged 65 and over - aged 80+	Healthcare & Premature Mortality	2012/13	1,334	Significantly improved	1,511	No significant difference	1,528	No significant difference	May-15
4.15i	Excess Winter Deaths Index (All ages)	Healthcare & Premature Mortality	Aug 2011-Jul 2012	8.6	No significant change			16.1	No significant difference	Feb-15
4.15ii	Excess Winter Deaths Index (Aged 85+)	Healthcare & Premature Mortality	Aug 2011-Jul 2012	10.6	No significant change			22.9	No significant difference	Feb-15
4.15iii	Excess Winter Deaths Index (All ages)	Healthcare & Premature Mortality	Aug 2009-Jul 2012	14.8	No significant change			16.5	No significant difference	Feb-15
4.15iv	Excess Winter Deaths Index (Aged 85+)	Healthcare & Premature Mortality	Aug 2009-Jul 2012	19.5	No significant change			22.6	No significant difference	Feb-15
4.16	Estimated diagnosis rate for people with dementia	Healthcare & Premature Mortality	2012/13					48.7%		Aug-15

Note:

Some of the indicators in the PHOF are still based on Berkshire West PCT and Berkshire East PCT averages. This means that the data shown is not at an LA level and may therefore be an under or over estimation. These indicators include: 2.21vii - Diabetic eye screening; 3.03 - Population vaccination coverage.